



FOR IMMEDIATE RELEASE

Press Contact – Suzanne Pruitt

678.285.0307 | Suzanne@marshmeadowsmarketing.com

TIMELESS ACCENTS. ENDLESS DESIGN POSSIBILITIES.

Ambella Home Puts Spotlight on Latest Product Offerings, New Design Directions During Spring 2014 High Point Market

DALLAS, TX (February 18, 2014) – From enduring traditional styles to fresh new finishes and clean, simple design lines, Ambella Home continues to evolve to meet the needs of its growing customer base. Offering timeless looks that blend seamlessly into any home environment, the latest offerings and best-selling designs for every room in the home will be on view in Ambella’s Hamilton Wrenn Design District showroom— **310 North Hamilton, Suite 110** – during the April 2014 High Point Market.

(Editor’s note: High resolution versions of images shown available via request or download. See end of release for details.)

Ambella Home Spring Market highlights include:

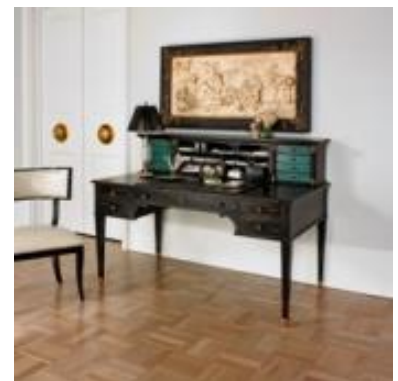
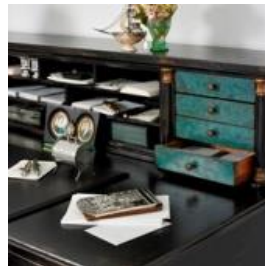


#12542-820-002 Elliptic Media/Storage Cabinet (left)-

Made of mahogany solids and veneers, this versatile storage design offers a fabulous, functional accent for any room. Features solid brass pulls and stretchers. Interior includes three removable wood shelves.
W:38” x D:19” x H:65”

#24068-300-060 Pierre Writing Desk (right)-

Bring a touch of timeless French elegance to today’s home with this delightful desk design. Made of mindi solids and veneer, it features all brass hardware and a hand-rubbed ebony finish accented with antique gold and Verdi. The piece has five drawers with center drawer functioning as a keypad pull-out tray. Case on desk has eight drawers and a pigeon hole compartment -- perfect for storage and organization. W:60” x D:21” x H:30”



#17501-600-086 Castilian Round Dining Table (right) –

Old World elegance custom-tailored to today's lifestyle. A statement piece for any dining room, this table is crafted from solid oak with thick oak veneer. Featuring a hand-carved border around the top with a twisted column pedestal base, it is finished in a rich mahogany. Measures-- DIA: 86" x H: 30.5". Also available in 64" and 74". Shown with Avignon Arm and Side Chairs.



#28041-800-001 Bibliothèque Bookcase (left)-

Blending 18th Century French style with modern design lines, this grand scale bookcase cabinet is made of mindi solids and veneer with a hand-rubbed ebony finish. Antique gold and Verdi accents complete the look. Cabinet interior is paneled in planks with a mahogany finish. Features three adjustable wood trimmed glass shelves. Top bonnet of cabinet is lighted. W:74" x D:19" x H:92"

#12546-300-064 Stowe Writing Desk (right)-

With its simple lines and clean styling, this design brings antique writing desk concepts to the 21st century. Made of mahogany solids and veneer with a deep walnut finish. Three pencil drawers with solid brass pulls add the perfect finishing touch. W:64" x D:30" x H:30"



#09503-850-001 Promethian Console (left)-

A study in texture and tone, this piece can bring a timeless touch of casual elegance to any décor style. Cast stone and forged iron come together with aluminum details and a burnished finish to create a richly textured look. A penshell border adds the finishing touches to a black fossil stone top. W:80" x D:21" x H:39"

#06787-850-001 Racquel Demilune Console (right)-

The perfect accent for a foyer, hallway or corner space, this console is crafted from gmelina and iron with antique mirror inlaid on its top and legs. W:49" x D:24" x H:36"



#24067-830-001 Gigi Chest (left)-

Measuring 46"W x 21"D x 34"H, this versatile chest can bring a touch of the French Countryside indoors with the soft blue and natural tones of its hand-styled antique finish. Crafted from mindi wood solid and veneer. Drawers feature full extension metal glides.

#06788-850-001 Loden Console Table (right)-

Carved wood rope molding provides the perfect complement to the antique mirror finish on all sides of this striking console design. Measures - W:60" x D:12" x H:33"



ABOUT AMBELLA HOME- Headquartered in Dallas, TX, Ambella Home was founded in 1995 by George Moussa. Each piece in the line is uniquely designed and manufactured. A meticulous production management process ensures that every item consistently embodies the company's signature hallmarks of beautiful design and quality craftsmanship. Skilled carvers, craftsmen and artistic finishers use only the finest materials and best techniques to handcraft each design. Over the years, the Ambella Home line has grown to include fine furniture and home accents for every room in the home, including sink chests, dining/occasional tables, wine bars, chests, cabinets, sideboards, desks/ home office, bookcases, curios, armoires, media cabinets, seating, beds, fireplace mantles, mirrors, pedestals, columns and other designs. For more information, visit www.ambellahome.com or call 214.631.8901 or write: 4910 Lakawana Street, Dallas, TX 75247.

###

EDITOR'S NOTE:

Images shown available via request to Suzanne Pruitt at Suzanne@marshmeadowsmarketing.com or
678.285.0307 or
via download link and ftp access:

Click to download:

<https://www.yousendit.com/download/eINLRm82U1B6NEILSk1UQw>

Via ftp access:

Go to: [ftp.speartek.com](ftp:speartek.com)

Login: 3mweb Password: 3m30144

Folder: Ambella | Ambella Spring 2014 High Point Highlights

