

HICKORY WHITE®

For further information:

Sydney Martin, Director of Marketing

919.273.0966

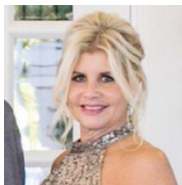
sydney.martin@sherrillfurniture.com

Hickory White Introduces Updated Upholstery Classics and Redefines Timeless Elegance

HIGH POINT, N.C. – This April, Hickory White is introducing a curated selection of casegoods and upholstery that feel like cherished treasures passed down through generations, exuding a collected-over-time feel.

Every element reflects the brand's dedication to quality and sophistication, from handcrafted details to thoughtfully chosen materials. The new products feature updated upholstery classics tailored to perfection, offering a timeless yet modern aesthetic that effortlessly elevates any space.

In addition to honoring the timeless appeal of traditional craftsmanship, Hickory White's introductions also embrace the concept of "Future Antiques." Combining innovative design with heirloom-quality construction, these pieces are poised to become the coveted antiques of tomorrow. Each item is designed to stand the test of time, serving as a testament to enduring style and exceptional craftsmanship.



"Our updated upholstery classics and timeless casegoods embody the essence of enduring elegance, reminiscent of cherished heirlooms passed down through generations," added India Miller, vice president of creative for Hickory White. "With a blend of tradition and innovation, we redefine timeless sophistication, crafting future antiques destined to grace homes for generations to come."

Product highlights include:



8539-23 Grand Teton Bed – The Grand Teton Bed from REVIVAL 81 combines style and comfort, featuring a fully upholstered design and a unique headboard shape that creates a pleasing aesthetic. The Grand Teton Sofa's success inspired this bed design, suitable for traditional and contemporary bedrooms.

743-30 Martino Console – The Martino Console is an exquisite piece of furniture that makes an impressive statement. It features a breakfront design with a cartouche in the middle and a faux lock, which gives it an elegant look. The piece is crafted from high-quality maple solids with a beautiful white Carrera marble top. Gold striping and tapered legs accentuate the design, adding to its aesthetic appeal.



743-20 Kline Spot Table – Perfect in size and scale, the Kline Spot Table is a stylish and versatile table suited for any space. This table is available in both satin brass and nickel, offering a unique look depending on the finish selection.

6700-05 Betsy Sofa – Sink into comfort with the Betsy Sofa. Its narrow, pleated arms exude understated elegance while a loose pillow back offers extra comfort.



ABOUT HICKORY WHITE

Hickory White has been a subsidiary of the venerable Sherrill Furniture Co. since 1997, manufacturing case goods and occasional furniture for several divisions of Sherrill Furniture including Hickory White, Lillian August Fine Furniture, CTH-Sherrill Occasional, and Mr. & Mrs. Howard for Sherrill Furniture. Founded in 1945 and still a privately held family-owned business in third-generation ownership, Sherrill Furniture Company and its divisions including Sherrill Furniture®, Hickory White®, Sherrill Occasional®, Precedent®, MotionCraft®, Whittemore-Sherrill™, Lillian August® for Hickory White® and Mr. & Mrs. Howard® for Sherrill Furniture® is a leading supplier of fine home furnishings to designers, trade professionals and major furniture stores throughout the United States and Canada.