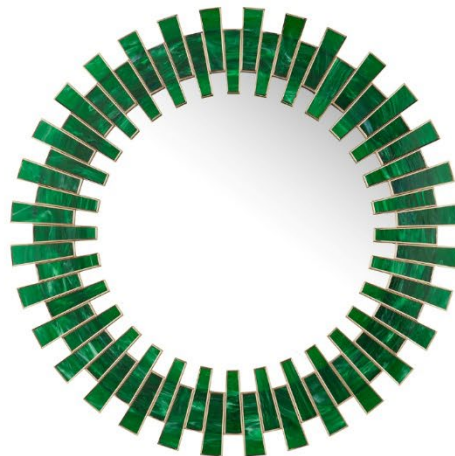


The Power of Green

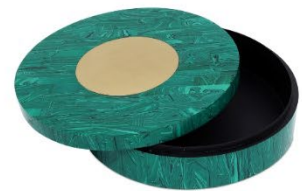
The word "green" holds many meanings. It is associated with emotions, greed, nature, sustainability, and is a much-loved color. Historical references for the use of green are endless. In Latin the word green is *viridis*, which is related to a large group of terms that suggest growth and even life itself. Green is a sympathetic, versatile color and supports others well but is also beautiful used alone. It includes a tremendous range of hues and variations including chartreuse, emerald, avocado, olive, celadon, apple, absinthe, forest, mint, kelly, sage, and the list goes on. Green is a favorite color in fashion and in home decoration. It adds calm and comfort while creating an atmosphere of joy and lightness. This October at High Point Market Currey & Company has embraced all shades of green for our new product debuts.



Romulus Green Vase Set



Glasdele Emerald Mirror



Transformation Box

The Romulus Vase Set includes three hand-thrown vases made of porcelain and covered with an extraordinarily fine texture that are created in the *Terre Melée* style, which is the art of combining stamped clays with colored oxides. Because these are hand-glazed, the green surfaces on each piece will vary slightly. The vases resemble archeological Greek lacrimal vases.

The Glasdele Emerald Round Mirror is composed of pieces of rich green art glass with subtle white swirls running through it. Each elongated shape is set into the

green decorative mirror after antique brass-finished metal edging is applied to it. Fitting the tapered pieces uniformly around the green mirror is a feat that requires mathematical precision. Because it is made of an artisanal material, its surface may vary slightly from mirror to mirror.

The Transformation Box is a 12-inch round decorative box made of composite in a marbled green finish that resembles malachite. A brushed brass disc accents the center of the lid, adding a polished detail. The interior is finished in glossy black, providing a sleek contrast to the richly patterned exterior. Because it is made of artisanal material, its surface may vary slightly from box to box.



Classico Green, Brielle, Claude Green Table Lamps



Selavy Chandelier

The shape of the Classico Green Table Lamp was inspired by a 19th-century Zanfirico vase created by Venetian glassmakers on the island of Murano. The mottled-green mouth-blown material from which the body is made was created in two pieces that are cinched by a band of metal in an antique brass finish.

With a pattern that mimics the northern lights, the pale pink, green, and brown glass from which the vase-shaped body of the Brielle Table Lamp is made is an example of one of the most sophisticated glassblowing techniques. The artful creation sits atop a metal base that was carved with a pattern before it was covered in a gold leaf finish. The green and pink lamp is topped with a box-pleated shade that adds to its tailored appeal.

The Claude Green Table Lamp is made of richly striated green glass that gives the surface a sense of movement. Its form, inspired by a traditional Grecian urn, is accented with a stepped base. Like the wide cap that is crafted from metal, it

is finished in antique brass. The combination of colors adds to the warmth of the bold creation.

The Selavy Chandelier has a circular frame to which curvy fasteners have been secured by hand, both made of wrought iron in a contemporary gold leaf finish. These hold feather-shaped oblong pieces of recycled glass cut from wine bottles. The overall effect is a glass floral coronet floating overhead with fanciful quills extending below the frame. Increasing the gold chandelier's charm is how the feathers undulate up and down slightly. The fixture has 11 lights and is dimmable.