

DEDON

NOW
FEEL
THESE

2026

Outdoor *Revolution*

Pioneering since 1990, DEDON was founded on innovation, beginning with its groundbreaking fiber, luxurious yet weatherproof. From the very beginning, we have believed in design's power to bridge worlds – connecting nature and innovation, tradition and modernity, craftsmanship and technology. What followed was a revolution in outdoor living. We didn't simply join the revolution, we sparked it.

DEDON engaged world-renowned designers; established its own fiber lab and production facilities in Germany, along with zero-waste furniture manufacturing on Cebu Island in the Philippines; created icons of modern design; added new materials to the mix; garnered the most prestigious awards. Our story is built on synergy between creativity and advanced materials, transforming outdoor spaces into places for connection and unforgettable moments.

Each piece of our handcrafted furniture is an invitation to experience the joy of life under open skies. Our mission remains to craft outdoor spaces that encourage lasting memories, where people gather under the open sky and share meaningful experiences. DEDON offers products of unrivaled quality, responsibility, and desirability to customers in more than 100 countries on six continents. With headquarters in Germany, production facilities in the Philippines, a subsidiary in the US, offices in Hong Kong, showrooms and representatives around the globe, and some 1,000 employees working for the company worldwide, DEDON is truly an international brand. Join us as we shape the future of outdoor living – where design, sustainability, and innovation come together as one.



A new Shade of *Serenity*



MBRACE's triaxial weave, using three DEDON Fibers, adds texture and depth to outdoor environments.

“Contemplating nature and what blends into it, I came to think about reeds, the tall, slender, grass-like plants that typically grow in wetlands, along riverbanks, and near bodies of water.”

Sebastian Herkner

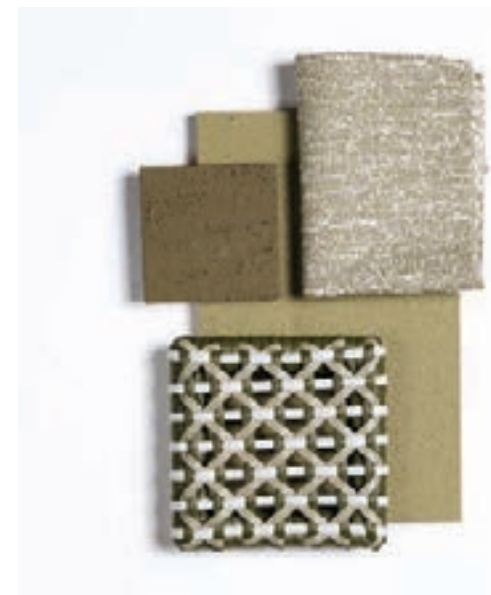


MBRACE by Sebastian Herkner has a new color. Sebastian Herkner's award-winning MBRACE collection, first introduced in 2016, was an instant favorite among both customers and critics. Praised for its inviting organic forms, the collection captivates with a rich material mix. And, unsurprisingly, the multiple vibrant colorways — each intricately woven from three Fiber tones — became a defining feature.

MBRACE welcomes a new colorway: alloro. Evoking reeds and their graceful harmony with nature, this soft green with delicate yellow undertones radiates fresh, serene elegance that continues the collection's deep connection to outdoor living. Vibrant colorways—each intricately woven from three fiber tones—are a defining feature of MBRACE, which captivates with its rich material mix of woven fiber, teak, and aluminum.



A true DEDON classic, MBRACE is loved for its inviting form and modern mix of materials, with DEDON Fiber in six colorways and teak or aluminum bases.



The alloro colorway, inspired by traditional weaving materials from nature, brings tranquility and extra versatility to MBRACE.



SCAN HERE FOR
IMPRESSIONS OF MBRACE

New Collection — MYMI

Grace in every Curve

MYMI by GamFratesi



From concept to creation — design duo GamFratesi refines their vision for MYMI.



MYMI by GamFratesi. Eight years ago, DEDON introduced the AIR chair — a light and transparent design that marked both its first collection of injection-molded seating and its first collaboration with GamFratesi. For designers Stine Gam and Enrico Fratesi, it was also an entry into outdoor furniture — yet AIR immediately made waves, offering a breezy, contemporary reinterpretation of the classic shell chair.

Now, with a deep familiarity with DEDON's signature fiber and craftsmanship, the duo returns with a fresh perspective — experimenting and uncovering unexpected solutions for a product they already knew well. Inspired by the cafe culture of Paris, where small tables and varied seating arrangements foster both lively conversation and quiet moments of solitude. The result is MYMI, a collection designed to seamlessly transition from casual cafe settings to refined dining environments.



MYMI's palette is a fusion of earthy tones, crafted into seamless unity.

“Working with DEDON Fiber is a truly beautiful process, as the brand offers an incredible range of colors — not just in the palette, but also in the surface finishes.”

GamFratesi



Seamless design — MYMI blends color, craft and technology

A Balance of Style and Utility. Feminine yet structured, retro yet contemporary, MYMI is infused with artisanal details — a woven backrest on the chair, a woven base for the table — that nod to DEDON's heritage of handcraft. Its DEDON Fiber striations evoke the texture and fluidity of traditional cultural garments, while its shape required a custom mold construction to achieve its porcelain-cup-like form.

Effortless Versatility for Hospitality and Home. Designed for a variety of outdoor spaces, MYMI is especially at home in hospitality settings, where rows of tables often create a monotonous rhythm.

Here, its woven textures and refined silhouette, add interest without overpowering the space. Even in its subtlety, MYMI creates a playful dynamic among seating arrangements, offering a sense of structure while allowing for new detail and graphic elements to emerge.

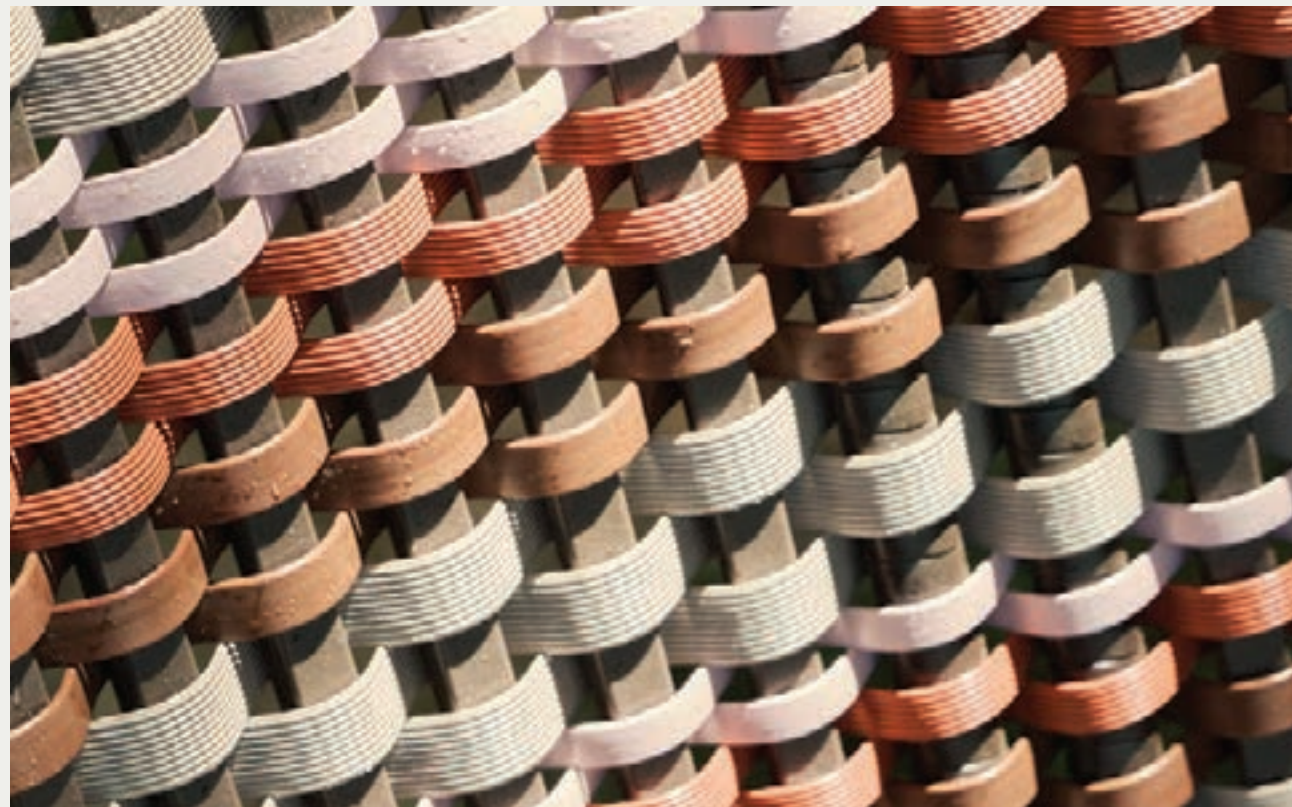
A Harmony of Hues & Materials. To define MYMI's color palette, GamFratesi turned to the natural world, drawing hues from layers of soil, vegetation, flowers, water, and sky. The collection leans toward soft, organic tones, staying true to the duo's signature aesthetic, while introducing bolder hues that reflect DEDON's vibrant spirit.

The MYMI chair is available in three weaving colorways: myemba, mymara, and myroca. Its high-performance polypropylene shell comes in two colors: solid lipari and black pepper. Tapered legs are available in either teak or powder-coated aluminum, matching the seat shell for a seamless look.

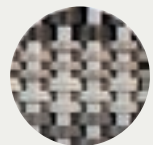


Texture, Tone & Technique — Woven in perfect harmony, the undulating pattern creates a sense of movement, softness, and tactile beauty.

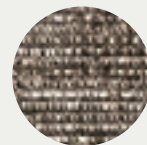
MYMI Fiber and Fabric



Recommended fabrics



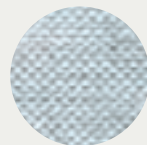
myroca layers neutral shades into a subtle mosaic, reflecting the elemental textures of stone, soil, and shifting skies.



CALEO granit



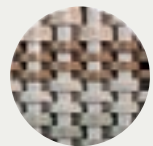
CALEO bay



GAIA calypso



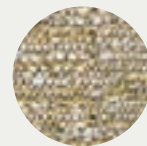
MUSE sylt



mymara blends soft hues in a luminous weave that feels breezy and uplifting, echoing the gentleness of dawn.



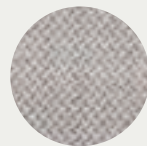
CALEO bay



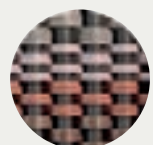
CALEO borea



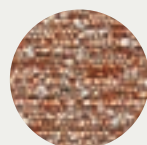
GAIA hamptons



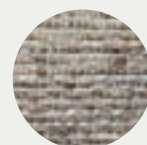
MUSE fossil



myemba combines warm reds, browns and pinks against a black pepper shell, evoking the vibrant glow of earth at sunset.



CALEO caviar



CALEO cost



GAIA koi



MUSE hazel



Armchair incl. aluminum legs, myroca



Armchair incl. aluminum legs, mymara



Armchair incl. aluminum legs, myemba



Armchair incl. teak legs, myroca



Armchair incl. teak legs, mymara



Armchair incl. teak legs, myemba



Bistro table incl. hpl tabletop, myvera



Bistro table incl. hpl tabletop, myezra



SCAN HERE FOR
IMPRESSIONS OF MYMI



Designer Sebastian Herkner is known for his distinctive approach to materials and form.

The Terms of *Endearment*



“The collection doesn't formally set itself apart but rather enters into a dialogue with nature – the curve of leaves, the softness of dunes, the sway of waves.”

Sebastian Herkner

New Collection — MDEAR

Inspired by organic structures, MDEAR blends bold textures with fluid forms.



MDEAR by Sebastian Herkner. In an era where indoor and outdoor spaces are increasingly interconnected, DEDON introduces a new category of modular lounging, one that values fluidity, adaptability, and a sensory experience. MDEAR by Sebastian Herkner is a collection of five organic shapes that can stand alone or join together for larger seating arrangements.

Desiring something less geometric and architectural and more sculptural and rounded, the designer turned to nature for MDEAR's design. "To me, the outdoors means nature and passion," Herkner states. Herkner then experimented with various DEDON Fibers, cross-sections, and scales in order to realize the optimal pairing of comfort, organic shape, and naturalness.



In MDEAR, Sebastian Herkner scales up a DEDON signature weaving pattern, creating a bold, contemporary look.

With MDEAR — drawing its name from the word 'endear,' or to 'captivate or cherish', Herkner continues his collaboration with DEDON and adds to a legacy of best-selling products including MBRACE and MBARQ. "MDEAR is my idea of organic islands for the outdoors which can be combined into various shapes due to their modularity," says Herkner.

With a sharp eye, some might notice a familiar weaving pattern. "I had the spontaneous imagination to blow up the iconic MBRACE weave I developed years ago to create a very contemporary look," Herkner explains. The contrast between MDEAR's tight, structured weave for the seat and a more open weave for the backrest creates a dynamic visual rhythm. The intricate, handwoven design demands new levels of artisanal precision, reinforcing DEDON's position as a pioneer in weaving. The MDEAR collection features 5 organic shapes in one weaving colorway: pepper bold touch.

Offering versatility in everyday life and fitting into various settings, modular lounges continue to be a popular choice for many homes. One modular element of MDEAR is strong enough to stand alone - whether a single Lounge Chair on a city balcony or a sprawling arrangement in a family home, the collection's ability to transform over time resonates with today's demand for flexible, investment-worthy design that evolves with changing needs.



MDEAR introduces a new category of modular lounges, where each hand-woven piece works both alone and together.



MDEAR Fiber and Fabric



Left corner module incl. Dry+ cushion set, pepper bold touch



Left module incl. Dry+ cushion set, pepper bold touch



Right corner module incl. Dry+ cushion set, pepper bold touch



Right module incl. Dry+ cushion set, pepper bold touch



Coffee table incl. teak tabletop, pepper bold touch



Footstool incl. Dry+ cushion, pepper bold touch

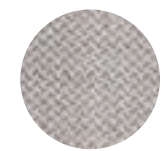


SCAN HERE FOR
IMPRESSIONS OF MDEAR



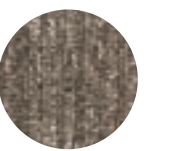
Pepper Bold Touch offers a sharp black-and-white weave, a modern evolution of Pepper that feels timeless and inviting.

CUSHION SET



MUSE fossil

DECO / LUMBAR



CALEO granit

Pure Wood, *pure Craft*

“The design reflects a sense of longevity and storytelling, creating a centerpiece for shared moments.”

Martin Hoss

Crafted from impressive solid teak, SOLYD's design is built for effortless gatherings.

New Collection — SOLYD



SOLYD by Martin Hoss. An industrial designer with a background in boat design brings a fresh new perspective to DEDON's roster of internationally recognized talent. SOLYD by Martin Hoss takes inspiration from historic work tables — sturdy and built to endure generations.



A Table for Gathering and Connection. Whether serving as a dining table, workspace, or social hub, SOLYD's generous proportions and expansive surface ensures ample space for connection, setting the stage for shared moments, conversation, and lasting memories. The smooth, inviting teak contrasts beautifully with the woven texture of any DEDON chair, enhancing the overall tactile experience while adding warmth and comfort.

Once found in traditional rural settings, work tables have been repurposed as dining surfaces in contemporary homes, in quiet tribute to longevity and storytelling. Hoss translates this heritage into a refined, modern design that balances strength, elegance, and artisanal mastery. The result is a perfectly universal table, over 9 feet and over 3 feet wide, that seamlessly integrates into contemporary lifestyles while preserving the charm and authenticity of its historic roots.

At its core, SOLYD is a testament to DEDON's exceptional craftsmanship. Constructed from premium Grade-A teak sourced from certified plantations in Indonesia, the table showcases flawless wood grain, deep rich color, and remarkable durability. Each teak slab is hand-selected for its superior quality, ensuring that SOLYD embodies both strength and beauty. The impressive four-centimeter-thick tabletop creates a commanding presence, with five joined teak planks offering a robust yet refined aesthetic — a celebration of artistry and meticulous woodworking.

A true universal table which comfortably accommodates communal dining, social gatherings, and multifunctional use, SOLYD acts as a neutral yet bold centerpiece, seamlessly adapting to modern and traditional spaces alike. Its clean lines, minimalist form, and artisanally crafted materials give it both a timeless and contemporary edge with inherent authenticity.

A table built to thrive for generations, with teak's natural beauty deepening over time.

Grounded in Nature, designed for Living



SCAN HERE FOR
IMPRESSIONS OF SOLYD



German designer Martin Hoss is introducing a seamless addition to the DEDON portfolio.

Explore Invert Fiber

CIRQL NU by Werner Aisslinger



Innovative yet archetypal — a truly unique interplay of shape and color



Bistro table incl. hpl tabletop, black pepper



Bistro table incl. ceramic tabletop, tecton



Bistro table incl. hpl tabletop, solid lipari



Bistro table incl. ceramic tabletop, mineral gray



“DEDON combines technology and production processes with a huge emphasis on ergonomics and long life cycles.”

Werner Aisslinger

The CIRQL NU bistro table, available in Invert Twilight and Invert Nightfall, combines striking design with everyday functionality. Its semi-transparent weave creates an open pattern that plays beautifully with light and shadow, drawing inspiration from traditional African outdoor chairs once crafted around oil drums. A choice of HPL or ceramic tabletop pairs with a powder-coated aluminum base, balancing refined aesthetics with lasting,

weatherproof durability. At its core is DEDON's groundbreaking 'Invert' fiber technology—an innovation that fuses two distinct colors and fiber types into a single strand through a co-extrusion process. This innovation delivers stunning colorways with diverse textures and geometric patterns with an almost iridescent sheen, shifting depending on the viewing angle.



SCAN HERE FOR
IMPRESSIONS OF CIRQL NU



Collection Update — SEASHELL GRAND



Footstool incl. Dry+ cushion, oak



Footstool incl. Dry+ cushion, oasis



Footstool incl. Dry+ cushion, seaside



Footstool incl. Dry+ cushion, umber



The interplay of 2 distinct fiber colors making up each weave, allows a personalized touch in any outdoor or indoor space.

SEASHELL GRAND
by *Jean-Marie Massaud*

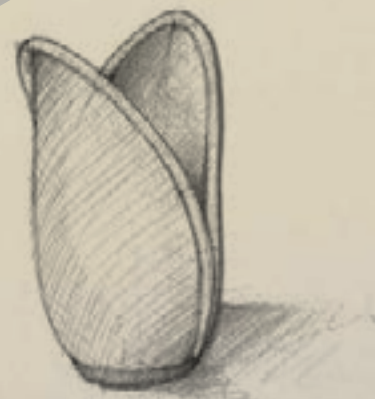
SEASHELL GRAND, DEDON's eco-conscious line inspired by the gentle embrace of a seashell, now includes a versatile footstool. As the wing chair, it is woven from DEDON EcoCycle Fiber, which is 90 percent derived from renewable plant-based resources. EcoCycle Fiber offers the same luxurious appearance and texture as proven DEDON Fiber along with the same unrivaled strength and weatherability.



SCAN HERE FOR
IMPRESSIONS OF SEASHELL GRAND

Collection Update — SCOORA table Lantern

SCOORA by Hoffmann Kahleiss Design. Extending a warm evening nestled in a seaside lounge area, around a pool deck, or on a rooftop terrace just got easier with SCOORA, a refined yet playful woven table lantern that brings craftsmanship and versatility to outdoor and indoor spaces. As the smaller counterpart to the visually arresting SCOORA floor lamp, SCOORA table lantern offers the same organic form and delicate, intricate weave in a more compact, adaptable size. Whether positioned in a prominent spot or tucked into a cozy corner, it enhances any setting with its soothing, atmospheric light.



A poetic Touch of Light



The SCOORA collection is both visually poetic and functionally intuitive, allowing easy access to place an LED fixture or candle. A variation of the name 'Zora,' which in different languages and cultures has meanings such as sky, sun, sunrise, or shell, SCOORA resembles an open shell turned to the sky. With its organic silhouette and transparent, woven structure, it casts mesmerizing patterns of light and shadow, creating a serene ambiance that feels both intimate and expansive.

Recognizing the desire for greater versatility, SCOORA table lantern was conceived by Birgit Hoffmann and Christoph Kahleiss as a more adaptable addition to the SCOORA family. "We felt that such a beautiful lamp should not be limited to the floor," explains Hoffmann. "By scaling it down, we made it possible to place SCOORA on a dining table, a sideboard, or a shelf — perfect for extending the warm glow of long evenings outdoors."

SCOORA table lantern is woven from DEDON's groundbreaking "Invert Fiber," which has two distinct surfaces and colors within a single strand — one side rounded, the other flat. This innovative approach, produced in a single step at DEDON's headquarters in Lüneburg, Germany creates a fascinating color-shifting effect on the lamp's surface, adding depth and movement to its woven texture. Since the inner side is white, the Fiber enhances SCOORA's brightness, for a particularly vivid glow.

Whether glowing on a summer evening by the sea or adding warmth to a crisp autumn night, SCOORA table lantern is more than just a lamp — it's a celebration of light, craftsmanship, and the beauty of nature's influence on design.



The SCOORA table lantern is available in two harmonious colorways: cedar touch and arpa touch.

"On a long evening on the terrace of a beautiful hotel — such as one we love overlooking the mountains in South Tyrol — it's always nice to have a nice ambient light like SCOORA."

Birgit Hoffmann



SCAN HERE FOR IMPRESSIONS OF SCOORA

Collection Update — TIBBO

TIBBO by Edward Barber & Jay Osgerby



Hand-crafted from premium teak, TIBBO offers great weather-resistance and durability in extreme conditions and is designed for indoor and outdoor use.



A footstool joins TIBBO, DEDON's first collection to unite woven fiber with warm and inviting teak. This versatile new piece enhances existing dining and lounge arrangements or stands beautifully alone. Seamlessly bridging indoor and outdoor living spaces, TIBBO embodies luxury through the meticulous artistry of hand-turned wood, the natural look and exceptional comfort of a specially developed fiber, and remarkable lightness.

TIBBO also gains a thoughtful upholstery update — cushion piping in all nature-inspired hues, from a rich crushed berry tone to the complex blue gray of a restless sea. This subtle yet distinctive piping detail elevates the entire collection with a heightened sense of sophistication, redefining elegance in outdoor living.

Luxury Through Meticulous Artistry



Footstool incl. Dry+ cushion



SCAN HERE FOR IMPRESSIONS OF TIBBO

Fabric Update

DEDON's deco pillows debut a refined new detail: piping in nature-inspired hues, from the richness of crushed berry to the complex blue-gray of a restless sea. Available for all sizes and colors, including COM.



MUSE fossil with
MUSE sylt piping



MUSE grafitte with
MUSE sylt piping



MUSE moss with
MUSE sylt piping



GAIA bohemia with
TUCSON magnet piping



GAIA zephyr with
TUCSON allure piping



GAIA koi with
TUCSON goji piping



New Fabric *TUCSON thyme*

New to DEDON's Premium Fabric collection, TUCSON thyme is a delicate, small-patterned fabric crafted from 100% acrylic. Its tight weave offers a smooth, refined hand feel while ensuring the resilience needed for outdoor living.



PRODUCTS BY CATEGORY

Iconics



DAYDREAM
by Richard Frinier



KIDA
by Stephen Burks



LEAF
by Frank Ligthart



MBRACE
by Sebastian Herkner



NESTREST
by Daniel Pouzet & Fred Frety



ORBIT
by Richard Frinier



SWINGREST
by Daniel Pouzet

Chairs



BELLMONDE



CALADIO



CIRQL NU



CIRQL NU



FLLAIR



KIDA



MBRACE



**MBRACE
ALU**



MYMI



MYMI



PLAY



PLAY



ROII



ROII



**SEASHELL
NUO**



**SEASHELL
NUO**



SEAX



TANGO



TIBBO

Beachchairs / Daybeds



FEDRO



LEAF



LOUNGE



LOUNGE



MBARQ



MBRACE



MU



MU



PAROS



ROII



SEALINE



**SEASHELL
NUO**



TIBBO

Tables



BELLMONDE



BELLMONDE



BELLMONDE



CIRQL NU



FLLAIR



MBRACE



MYMI



SATELLITE



SATELLITE



SATELLITE



SEAX



SEAX



SEAX



SOLYD



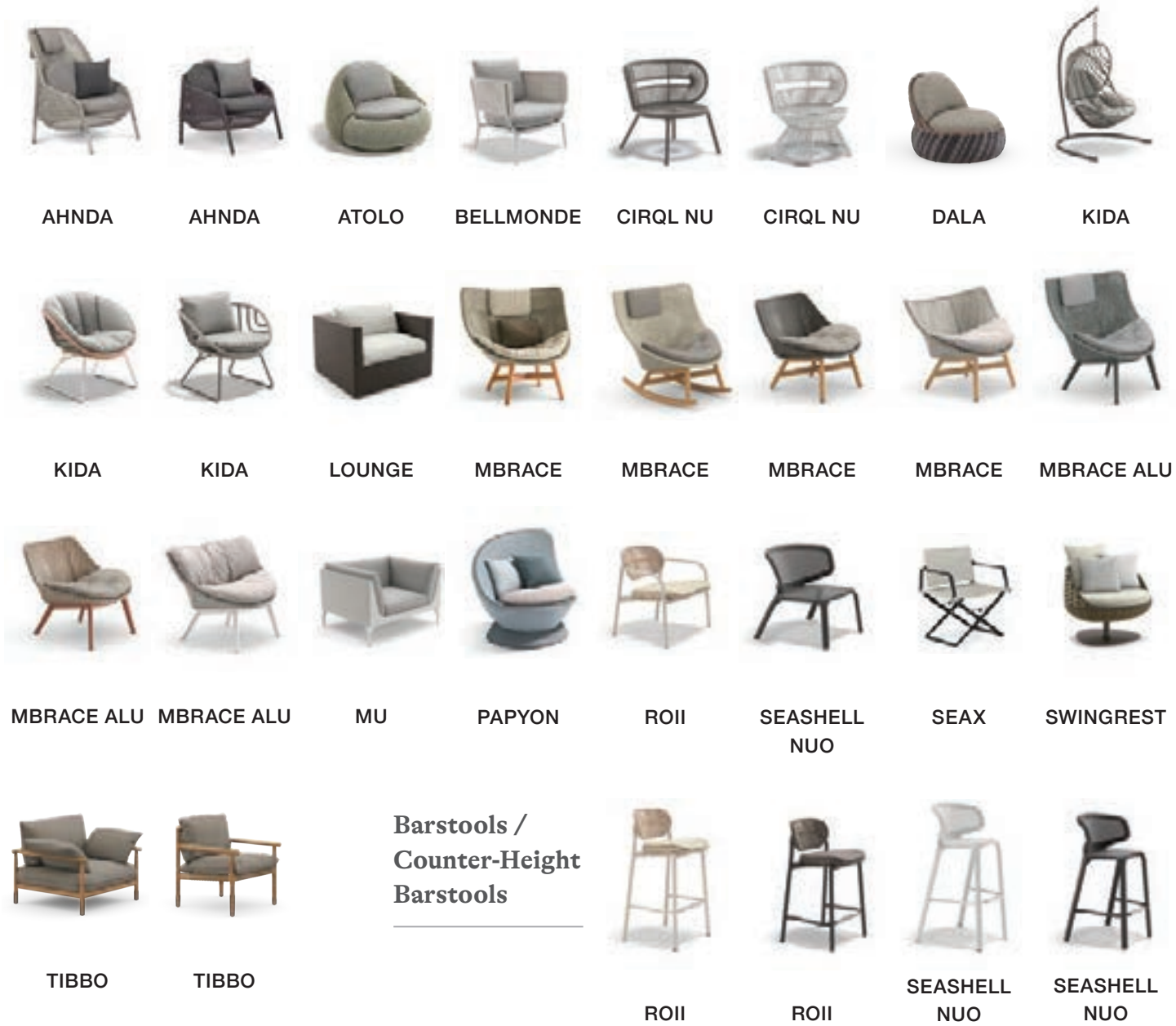
TIBBO



TIBBO

PRODUCTS BY CATEGORY

Lounge chairs



Lighting



Lounging



Side / Coffee Tables



Accessories



Novelties Brochure 2026

DEDON NEW YORK

D & D Building
979 Third Avenue
Suite 720
New York, NY 10022
212-334-3345
newyork@dedon.us

DEDON LOS ANGELES

Pacific Design Center
8687 Melrose Avenue
West Hollywood, CA 90069
Suite B-122
310-388-4721
losangeles@dedon.us

DEDON FLORIDA

Design Center of the Americas
1855 Griffin Road
Suite C-120
Dania Beach, FL 33004
954-299-0651
florida@dedon.us

DEDON CHICAGO

The MART
222 W Merchandise Mart Plaza
Suite 1452
Chicago, IL 60654
312-321-1093
chicago@dedon.us

DEDON DALLAS

Dallas Design District
1025 North Stemmons
Suite 675
Dallas, TX 75207
214-736-4906
dallas@dedon.us

DEDON HIGH POINT

313 S Centennial St.
High Point, NC 27260
877-693-3366
info@dedon.us