

JC
ICONIC

THE JOURNEY OF JONATHAN CHARLES



CONTENTS

INTRODUCTION	9
BRAND STORY	15
CAPABILITIES	31
CRAFTSMANSHIP	35
CATEGORIES BY JC ICONIC	75
<i>Tables</i>	77
<i>Seating</i>	143
<i>Sideboards & Buffets</i>	171
<i>Bars</i>	181
<i>Cabinets</i>	187
<i>Beds</i>	213
<i>Nightstands & Chests</i>	219
<i>Desks & Secretaries</i>	233
<i>Shelves & Étagères</i>	257
<i>Mirrors</i>	261
<i>Accessories</i>	273
<i>William Yeoward... Collected</i>	279

[OPPOSITE]

Queen Anne Walnut Bureau with Chinoiserie Interior & Mirrored Doors | 494482-CWM

[OVERLEAF]

Walnut Leather Games Table with Geometric Inlays | 492264-WAL



JC ICONIC

INTRODUCTION

Founded in 2004 by English designer Jonathan Sowter with just 10 dedicated craftsmen, Jonathan Charles Fine Furniture has grown into a globally respected brand with a team of over 2,200. From the beginning, our mission has been to revive the art of fine furniture-making through meticulous European antique reproductions and distinctive transitional designs.

Today, our state-of-the-art facility in Vietnam blends time-honored techniques with a forward-thinking approach. We've built more than a factory - we've created a nurturing environment focused on well-being, creativity, and the preservation of rare artisan skills that define true luxury. Our in-house brass foundry allows us to craft bespoke hardware, ensuring every detail is original and refined.

Beyond the home, Jonathan Charles is a trusted partner in the global hospitality sector. Our furnishings grace luxury hotels and five-star properties around the world, bringing timeless elegance and craftsmanship to some of the most prestigious interiors in the industry.

We are proud to be a brand where heritage, design, and excellence meet - creating furniture that is not only made to last, but made to be remembered.

[OPPOSITE]

Queen Anne Pollard Veneer Bureau Cabinet With Mirrored Doors | 494477-LRO



Vision

We draw inspiration from the everyday world around us - a piece of fossilized coral, the feel of Scottish fog on your face, an antique French radiator cover - and look for ways to create standalone pieces and carefully curated portfolios that resonate in a similarly evocative way.



“Our furniture is not just utilitarian, it’s exquisite to see, touch and experience.”

JONATHAN SOWTER

Founder & CEO & President

[OPPOSITE]

Traditional Four Door Breakfront Display Cabinet | 495144-BLA
 Regency Style Walnut Upholstered Settee | 493600-WAL
 Églomisé & Gilded Iron Set of Two Tables | 494188-G
 High Curved Back Walnut Dining Side Chair | 494305-SC-WAL
 Small Gilded Sunburst Mirror | 494468-GIL
 Hammered Light Brown Brass Circular Wine Table | 495030-BRA



We are **CRAFTSMEN,**
We are **DESIGNERS,**
We stand for **QUALITY.**

We work with artisans who display a large range of skills. We take pride in what we do, which is evident in our beautifully-crafted antique replicas. We go far beyond just creating furniture that resembles English classics. We employ age-old techniques, which breathe soul and lasting-quality into our products.

We never compromise on design and would be foolish to compromise on quality. Only the finest materials are used in our furniture. We also employ inspectors that ensure technically-sound components and design throughout the process. These experts oversee production, checking in at key transaction points so that nothing is overlooked. Before an item is packaged, it is reviewed with a keen eye and must pass a comprehensive checklist by our quality control inspector.





JC ICONIC

BRAND STORY

Jonathan Charles maker of high-end furniture objects. Renowned for blending eclectic materials and innovative design with a master craftsman's attention to detail, Jonathan Charles is widely considered among the highest quality fine furniture makers in the world.

[OPPOSITE]

60" Hattie Round Dining Table | 496205-CWM-60D

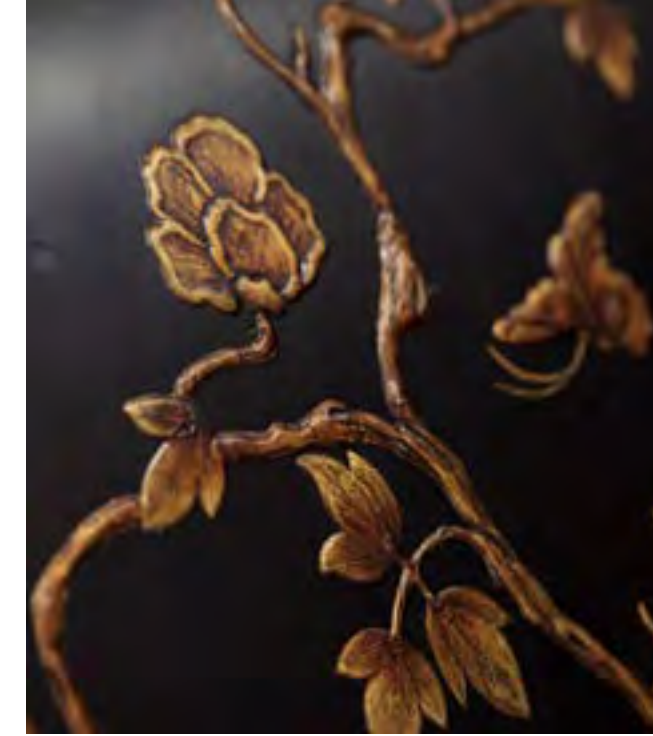
[OVERLEAF]

Dark Gold Walnut & Hand Painted TV Cabinet | 500142-WDG
Biedermeier Greek Key Black Occasional Chair | 495848-BLA
Empire Style Winged Sofa Table | 495100-GIL
Large gilded sunburst mirror | 494469-GIL
Églomisé & Gilded Iron Six-Tier Étagère | 494194-G
Geometric Table Lamp | 495377-TWC
Gilded Iron Tray Table in Smoky Black Top | 491135-G-BLG





Queen Anne Pollard Veneer Bureau
Cabinet With Mirrored Doors



OUR STORY

Few people are fortunate enough to know at the age of 12 what they will do for a career, but making a piece of furniture in a school woodwork class provided the spark of inspiration for a passion that has driven Jonathan Sowter for almost 30 years. After school, Jon took a job in a Yorkshire furniture company training as a cabinet maker while subsequently graduating with a BA of Honors in Furniture Design and Craft. The next thing he knew, he was recruited to help establish a furniture factory in Rajasthan. After two years, he founded his own furniture business in 2004. Starting with just 10 people in a small factory, the business has grown to over 2,200 employees and all of whom are well trained artisans capable of producing top quality furniture to the highest possible global standards.

Jon

loves to keep pushing the boundaries of the business, and particularly enjoys exploring new methodologies and materials. Some years ago, for example, Jon designed an oyster secretary cabinet which was so ornate that hardware from his regular suppliers could not do it justice. The only solution was for the factory to make the hardware from scratch and from that day onwards all brass and bronze fittings on Jonathan Charles furniture has been made in the foundry on site within the factory - something which makes Jon very proud.



What makes us different...

"The craftsmen and women will be able to earn a living for the rest of their lives with the skills we bring back..."

There aren't any large furniture factories, other than Jonathan Charles, with over 2,200 employees and an owner who is a cabinetmaker—someone who can use all the machines that the workers use and perform all the skills in the factory, like Jonathan can. Jonathan made his first piece of furniture at the age of 12 and has done nothing else since. The strength of Jonathan Charles lies in the passion for craftsmanship. Craftsmanship is at the very foundation of everything they do. Jonathan Charles revives skills and crafts that have long been forgotten on a production scale and are typically only practiced by artisans in small workshops making one-off pieces. Jonathan Charles is bringing these crafts back to life on a scale that makes them accessible to more people around the world.

There is an attention to detail in Jonathan's pieces that, years ago, was a hallmark of true craftsman-made furniture—details that have gradually been dying off as furniture styles become simpler and younger generations are tempted into more "modern" careers. The more complicated, skilled, and challenging a piece, the more Jonathan Charles is attracted to the challenge.

These days, companies are forced into simpler designs due to the increasing lack of skills. Jonathan Charles is committed to reviving as many of these skills as possible. We actively seek out new crafts to pursue, setting ourselves apart from every other large furniture company.

Buckingham Gilded Lyre Back Side Chair | 492836-SC-MAH-F200

THE CEO MAGAZINE //
CRAFTED BY HAND: JONATHAN SOWTER

The thrill of selling a piece of furniture made with his own hands launched a youthful Jonathan Sowter on an adventure that has mushroomed into a major enterprise. But it was even earlier, while he was still at school, that he first realised what he really wanted to do for the rest of his life.



If it weren't for this sofa, Jonathan Charles wouldn't exist. I made this sofa as a second-year upholstery project at university in 1994. While everyone else made a very traditional, fully upholstered sofa, I (as usual) decided to make life difficult for myself and do something completely different, much to the frustration of the lecturers who just wanted me to change my design to something more "conventional."

I managed to get this sofa showcased on a pedestal in the reception and registration area of the young designers' exhibition, where all design university graduates exhibit their work in London once a year. The sofa caught the attention of the legendary Paul Maitland Smith, who, after chatting with me for 20 minutes, offered me a job in India. I later moved to Vietnam to continue working for him, and the rest is history. So, if it weren't for this sofa catching Paul's attention, I would never have moved to Vietnam in 1996, wouldn't have met my wife, and wouldn't have started Jonathan Charles in 2004.

“I was just 12 years old at school when I made my first piece of furniture, and it was better than everybody else’s in the class,” Jonathan recalls. “I realised it was something I was good at and really, from then, I’ve known that’s all I wanted to do. So I left school and got a job in a furniture company and I realised I wanted to be a furniture designer, so I went off to university and did furniture design and craftsmanship. That’s really all I’ve ever done.”

It offered a journey from England to India to open a furniture factory for his employer, and from there, he ventured to Vietnam to do the same. It was in Vietnam that Jonathan found his niche, with an opportunity to strike out on his own as a craftsman and entrepreneur.

“I’m the Founder and CEO of both Jonathan Charles Fine Furniture, and Vietnam Furniture Resources,” he explains. “Jonathan Charles is the furniture brand – it’s my father’s first name actually – and Vietnam Furniture Resources is the manufacturing facility.”

Jonathan’s decision to establish his business in Vietnam was based on the country’s many highly skilled craftsmen – the more skills applied to a piece of furniture, the greater the competitive advantage Jonathan’s furniture had in its appeal to customers. Success came quickly.

In just two and a half years, the business grew from 10 to 1,400 employees. The biggest challenge, Jonathan

says, was doing it alone. “I had no formal business training, so we just learned from our mistakes as we went, and by talking to people,” he remembers.

Manufacturing for Jonathan Charles is just one facet of the business, which exports to 53 countries. Curiously, it also manufactures furniture for very high-end competitors, providing a second revenue stream, while a third stream supplies furniture for the Ritz-Carlton, Four Seasons and other high-end international hotel projects.

“We’ve also seen ecommerce sales take an absolute rocket in growth, so the ecommerce side of furniture has taken off in the past few months,” Jonathan says.

European and American furniture manufacturers have outsourced to Asian firms, but many haven’t enjoyed the same success due to their lack of local knowledge and influence with suppliers. That played to Jonathan’s advantage, because they “simplified and dumbed down their expectations”.

Jonathan relies on a self-taught philosophy for his relationship with employees. “Just make sure everybody can fulfil their ambitions within your company, and they’ll be loyal to you,” he says.

“I make a point of trying to find out what each person’s ambition is, and make sure they can achieve that ambition within our company.” That came from his previous employment experiences with bosses who were “not very nice”.



ICONIC PROJECTS

AMERICAS

- CHELSEA HOTEL
New York, USA
- VENTUS AUSTRALIS CRUISE
Patagonia, Chile
- ROSEWOOD MANSION HOTEL
Dallas, USA
- QUASAR SUPERYACHT
Quasar, Ecuador
- HOTEL CABO DE HORNOS EXPANSION
Punta Arenas, Chile
- MV MAGELLAN EXPLORER CRUISE
Punta Arenas, Chile
- ST REGIS
Aspen, USA
- LITTLE NELL
Aspen, USA
- EQUESTRIAN HOTEL
Ocala, USA
- SANDALS
Santa Barbara, Curacao
- HERMITAGE HOTEL
Nashville, USA
- RIDING ACADEMY
USA
- KELLEY HOUSE
USA
- AUBERGE RESORT (BOWIE HOUSE)
USA
- CHARLESTON PLACE
USA
- HOTEL DEL CORONADO
Nobu Restaurant
- WALDORF ASTORIA
New York, USA
- THE MANNER
New York, USA
- IBEROSTAR
Aruba, South America
- FOUR SEASON SPAGO
Maui, Hawaii

EUROPE

- LANESBOROUGH HOTEL
London, UK
- TATTU RESTAURANT
London, UK
- DORCHESTER
London, UK
- QUEEN ANNE CRUISE SHIP
UK
- K WEST HOTEL & SPA
UK
- TATTU RESTAURANT,
Leeds, UK
- THE CHANCERY
ROSEWOOD
Grosvenor Square, London, UK
- SEVEN VISION HOTEL, DVIN
Yerevan, Armenia

MIDDLE EAST

- ADDRESS SKY VIEW
Dubai, UAE
- FOUR SEASONS
RESORT AND RESIDENCES
Amaala, Saudi

ASIA

- RITZ-CARLTON
Langkawi, Malaysia
- REGENT HOTEL
Singapore
- RITZ-CARLTON
Fari Islands, Maldives
- RITZ-CARLTON
Singapore
- FOUR SEASONS RESORT
THE NAM HAI
Hoi An, Viet Nam
- MARINA BAY SANDS
Chinese Restaurant, Singapore

JC HOSPITALITY

INTRODUCTION

JC HOSPITALITY is one of the few large-scale global manufacturers able to provide traditional reproduction and custom furniture, lighting and accessories, using age-old techniques by hand. JC HOSPITALITY brand is a division of Jonathan Charles Fine Furniture, a company renowned for over 25 years for quality, authenticity and style.

Based in Vietnam, Jonathan Charles Fine Furniture was founded by Englishman and Cabinetmaker Jonathan Sowter, who sought to bring greater value to customers in the luxury furniture marketplace. For over two decades Jonathan Charles Fine Furniture has shipped hundreds of millions of dollars worth of hand-crafted residential furniture to over 50 countries.

JC HOSPITALITY builds upon the capabilities of Jonathan Charles Fine Furniture and works with the client to deliver unique contract projects on time and in budget, with craftsmanship top of mind. The Jonathan Charles Fine Furniture product catalogue of thousands of unique and reproduction designs is a key asset to clients of JC HOSPITALITY. “Too often, the furniture in a hotel looks like it was made for a hotel, this should not be the case...it should look like it was made for a millionaire’s residence...” is the often-quoted mantra of Jonathan Sowter, founder and CEO of Jonathan Charles Fine Furniture.

JC HOSPITALITY’s casegoods, upholstery, outdoor, lighting & artwork can be found at some of the world’s most high - end establishments, with major projects delivered at places as diverse as the Lanesborough, London to The Address Skyview in Dubai, and cruise ships and super yachts in South America.

[OPPOSITE]

RITZ-CARLTON | Fari Islands, Maldives



SCOPE

Casegoods / Upholstery / Outdoor / Lighting & Artwork

RITZ-CARLTON _ Langkawi, Malaysia

JC Hospitality is committed to each detail in designing and manufacturing the highest quality products for the most exclusive hotel & contract projects. Having our own manufacturing facility allows us to provide bespoke designs for all of your needs, and control all aspects of the design, development, and production process.

This enables us to ensure the best quality project within the desired budget. We dedicate ourselves to specializing in luxurious, high end designs, meeting project deadlines, and delivering to our clients - in all furnishing categories.



VENTUS AUSTRALIS CRUISE _ Patagonia, Chile



ADDRESS SKY VIEW _ Dubai, UAE



LANESBOROUGH HOTEL _ London, UK

WHY VIETNAM

In the 1990s some pioneer furniture manufacturers moved to Vietnam, attracted by a young workforce with a strong background in craftsmanship. Jonathan Charles Furniture was born out of those first foreign forays into the country and now the founder, Jonathan Sowter, has over thirty years of experience in the country he calls home.

Ease of access to quality materials, a skilled labour force and strong welfare rights for workers mean that Vietnam remains the country of choice for many luxury furniture manufacturers. Jonathan Sowter has led those manufacturers from the front, investing in the factories and contractors, creating a working environment with global standards.



JC ICONIC

CAPABILITIES

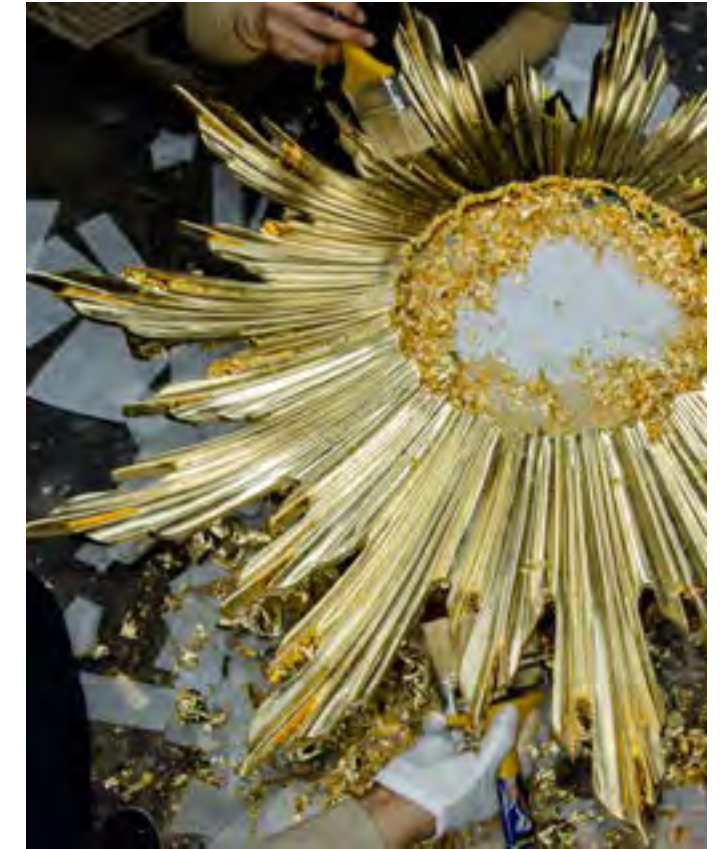
We turn aspirational designs into reality, driven by our commitment to quality and precision. Our skilled artisans meticulously handle each detail, while advanced technology, including CNC machining and modern finishing facilities, ensures perfection.

[OPPOSITE]

Finish Production Line At Factory

THE HIGHEST STANDARD IN QUALITY AND PRECISION

At Jonathan Charles we pride ourselves on the quality of our finished products, from the smallest brass handle commissioned for a top American retailer, to the most complicated artisanal piece in our catalogue. Fifty-three quality control inspectors operate a tightly controlled system of reviews and approvals. In fact, every component has a barcode which allows it to be tracked to the individual who created it. Last year there were a total of 11 million quality checks at Jonathan Charles. The pieces in your project will each have signed off 'standards', finish panels and components agreed upon by Quality Control, Production and a member of your team. Lastly, we have a state of the art virtual inspection room, enabling you to review your pieces remotely in real time with the Jonathan Charles team.





JC ICONIC

CRAFTSMANSHIP

The quality of design and work shown in something made by hand; artistry. We're artists in a studio, not machines on an assembly line. Originally founded by English furniture designer Jonathan Sowter, Jonathan Charles earned worldwide recognition excelling in the art of fine antique reproductions. Our craftswomen and craftsmen are artists, skilled at age-old furniture making techniques such as lost-wax casting, hand-cut marquetry, and crisp detailed hand carvings. Their creations exhibit unparalleled quality and a legacy of centuries of craftsmanship.

[OPPOSITE]

Marquetry Technique

WOOD CARVING

The carvers at JC are arguably the highest-skilled craftsmen in our factory. Wood Carving is an art that speaks for itself, and our team of carving artisans are some of the best in the business. We use only traditional hand-carving techniques.

One look at any of our carved pieces will tell you everything you need to know about our dedication to producing the finest pieces of furniture in the world. Hand carving is sadly a dying skill and many companies have switched to stamping, pressing and even resin overlays.



Can you believe my excitement when the clever carvers, who dedicate hours of their time to their trade, came up with this interpretation of a Bywater mirror for our spring collection. The two finishes of off-white and light acacia go to exaggerate the beauty of this complicated carving. I would love to see these used as a pair on each side of a magnificent four poster bed in a great country bedroom.

LEICESTER MIRROR

530196-WAA | William Yeoward... Collected

Dimension: W 31 3/4 x D 4 3/8 x H 62 1/2 inches





Very finely carved and gilded wall mirror in the manner of Grinling Gibbons with an undulating surround of fine Rococo scrolls and floral ornament crowned with a stylised fleur-de-lys.

Finely Carved & Gilded Rococo Style Mirror
494372-GIL | Heritage Portfolio

Dimension: W 33 x D 1 ¾ x H 55 inches



MARQUETRY

Inspired by history and tradition, we keep this amazing craft alive through our products and design. Now a rare skill, most of our artisans are taught the skill of marquetry in-house. Marquetry is an intricate technique developed during the early 16th century in Europe and involves covering the structural carcass of a product with pieces of veneer, cut by hand, and inlaid, to provide decorative detail. Artisans and designers use marquetry as a vessel for creativity to explore different motifs, patterns, and colors.



Fine round burl oak veneered centre table with serpentine apron, acanthus carved stem and palmette detail to base, and fine mother of pearl inlay throughout.



Burl & Mother Of Pearl Centre Table
499329-BRW-MOP | Heritage Portfolio

Dimension: W 48 x D 48 x H 31 ½ inches



Neo-classical style demilune walnut and satinwood cabinet with fine inlays throughout of floral swags and Grecian urns on the three front panels. Single drawer to top and three curved doors below with small brass handles that repeat the inlaid design. Adjustable shelf to the centre section and shelves to either side.



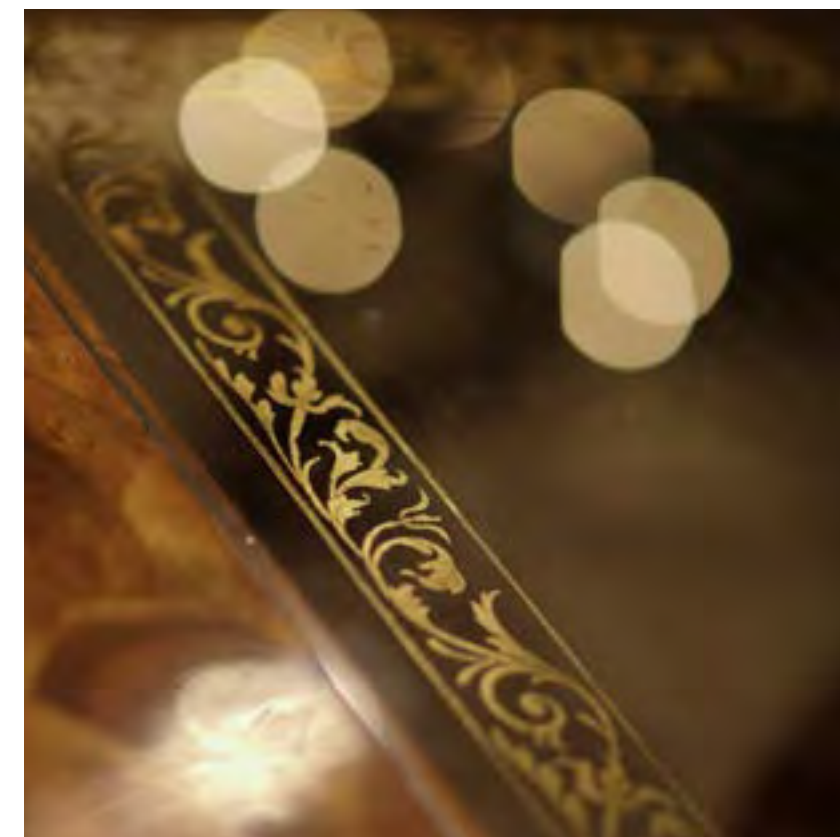
ADAM STYLE SATINWOOD & MARQUETRY DEMILUNE CABINET

492253-SAM | Heritage Portfolio



ÉGLOMISÉ

Traditional technique of decorative glass painting, dating back to Egyptian times. It is a very delicate, elaborate and imperfect craft, which gives each piece its own distinct character and individuality. Shading then painting with gold leaf on the reverse side of glass, we can achieve countless intricate designs. This age old technique is kept alive by our love of craftsmanship. All of our special finishers are trained in-house.



Oyster veneer coffee table with handpainted Italian gold leaf Églomisé decoration on the glass top set on barleytwist legs above an openwork base.



SQUARE OYSTER & ÉGLOMISÉ COFFEE TABLE (52")

492225-WAL-GED | Heritage Portfolio

Dimension: W 52 ½ x D 52 ½ x H 20 inches



Decorative William and Mary style gilded mirror with graduated stepped profile, the panels filled with running bands of classical Renaissance style decoration on a gold ground beneath glass. Plain mirror glass.

**WILLIAM & MARY STYLE ÉGLOMISÉ
FRAMED & GILDED MIRROR**

492092-GEG-GPM | Heritage Portfolio

Dimension: W 38 x D 1 ¼ x H 52 inches



HAND PAINTING

This has been a recurring theme in European artistic styles since the seventeenth century, reflecting the Chinese artistic influences of the times.

It is characterized by its asymmetrical format and whimsical contrasts of scale, reflecting the attempts to imitate Chinese porcelain.



Experience the epitome of modern Asian elegance with our lacquered and hand painted entertainment cabinet. Melding sleek contemporary design with traditional craftsmanship, this entertainment console's highlight is the captivating hand-painted and gold leaf scene on its doors. Complemented by a black gloss finish and accents of antique golden luxury, it's a true masterpiece that transforms any space, effortlessly blending tradition with modernity. It takes our artists year to get to this level of quality and to paint just one of these takes over 120 hours.



MODERN ASIAN SMOKY BLACK & GOLD ENTERTAINMENT CABINET

500171-AGF-BLG | Modern Portfolio

Dimension: W 90 ½ x D 21 ¾ x H 28 ½ inches



Charming and decorative bedside gilded chinoiserie style decoration.



CHINOISERIE STYLE BEDSIDE TABLE

495352-EBF | Heritage Portfolio

50 **Dimension:** W 24 x D 17 ¾ x H 27 ¾ inches



Handpainted Birds on Rich Walnut and Light Gold Foil Drinks Cabinet



HANDPAINTED ON LIGHT GOLD FOIL DRINKS CABINET

495893-WRC-LGF | Heritage Portfolio

Dimension: W 25 x D 20 x H 72 ½ inches

EGGSHELL & LACQUER WARE

A process

synonymous with the Indochina region, eggshell is a time consuming but highly sought after process that no manufacturer of furniture has ever brought in-house. Generally this process is found only in rural villages of Laos, Cambodia and Vietnam.

In the spirit of maintaining exquisite techniques, at V.F.R we have brought this process to main stream manufacturing.

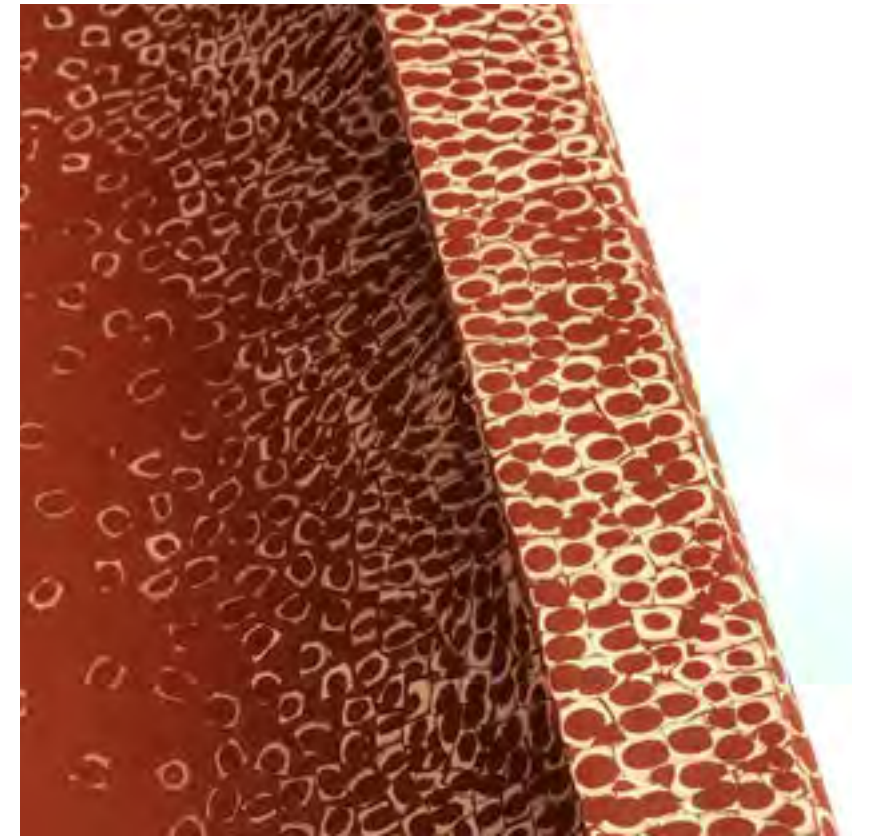
The newest of our finishing techniques, eggshell and high glossy lacquer finishes can be used across many substrates and design elements; furniture, paneling, doors, decorative accessories.



Eggshell



Lacquer ware



Red emperor desk with an alter table style top and a single drawer inlaid in red eggshell, set above a gold-leaf foil mix with a black gloss lacquer base.



RED EMPEROR DESK
495579-EDR | Modern Portfolio

Dimension: W 62 x D 28 ¾ x H 31 ½ inches



Inspired by the forms of ancient China, this chair is sculpted of hardwood with a high sheen, lacquer finish and upholstered in a Jonathan Charles performance fabric.



FUSION BLACK GLOSS DINING SIDE CHAIR

500250-SC-LBG-F048 | Modern Portfolio





It is the hardware that brings all the other details together to create the final completed work of art. Most of our hardware is cast in brass and distressed to achieve the appearance of an item that has been in use for hundreds of years.

Using various casting methods; sand casting, flask casting and lost wax casting, we produce hardware the same way a jeweler make a piece of intricate fine jewellery.

We have over 18,000 different designs of hardware in total.



Rococo style round table with oyster veneer top with drawers on a lost wax cast brass base with a small shelf in the centre.



Oyster Round Table On Brass Base
492096-WAL | Heritage Portfolio

Dimension: W 34 ½ x D 34 ½ x H 30 ¼ inches



Queen Anne style walnut and burl walnut veneered drinks cabinet on stand with finely cast patinated brass escutcheons and hinges, set on a carved walnut base with shallow carving and ball and claw feet. Fully fitted interior with glass storage and shelf.



Queen Anne Walnut & Satinwood Drinks Cabinet
492634-SAM | Heritage Portfolio

Dimension: W 42 1/4 x D 27 3/4 x H 68 3/4 inches



ETCHED BRASS

This is technique somewhat mesmerizing how acid can manipulate the metal in these ways. Any design you can think of can be added to the brass is depicted and then the final touch is to give it an antique look.



Inspired by the work of the French Modernists, this table is constructed of hardwood with an ebonized finish. Top features an acid etched interpretation of chinoiserie.

Fusion Curved Chinoiserie Console
500208-BAE-ENO | Modern Portfolio

Dimension: W 60 x D 15 ¾ x H 35 inches



FUSION CHINOISERIE ENTERTAINMENT CABINET

500226-BAE-ENO | Modern Portfolio

Dimension: W 84 x D 19 ¼ x H 22 inches



Fusion Chinoiserie Center Table

500229-BAE-ENO | Modern Portfolio

Dimension: W 40 x D 40 x H 32 inches



Fusion Chinoiserie Nesting Tables

500218-BAE-ENO | Modern Portfolio

Dimension: W 19 x D 16 x H 26 inches



GILDING

This is a decorative technique for applying a very thin coating of gold to solid surfaces such as metal, wood, porcelain, or stone...

Methods of gilding include hand application and gluing, typically of gold leaf, chemical gilding, and electroplating, the last also called gold plating.



Finely detailed small gilt sunburst mirror in Louis XIV style with a small central glass and eleven radiating points. Inspired by a 17th century original.

SMALL GILDED SUNBURST MIRROR

494468-GIL | Heritage Portfolio

Dimension: W 40 ¼ x D 2 ½ x H 40 ¼ inches



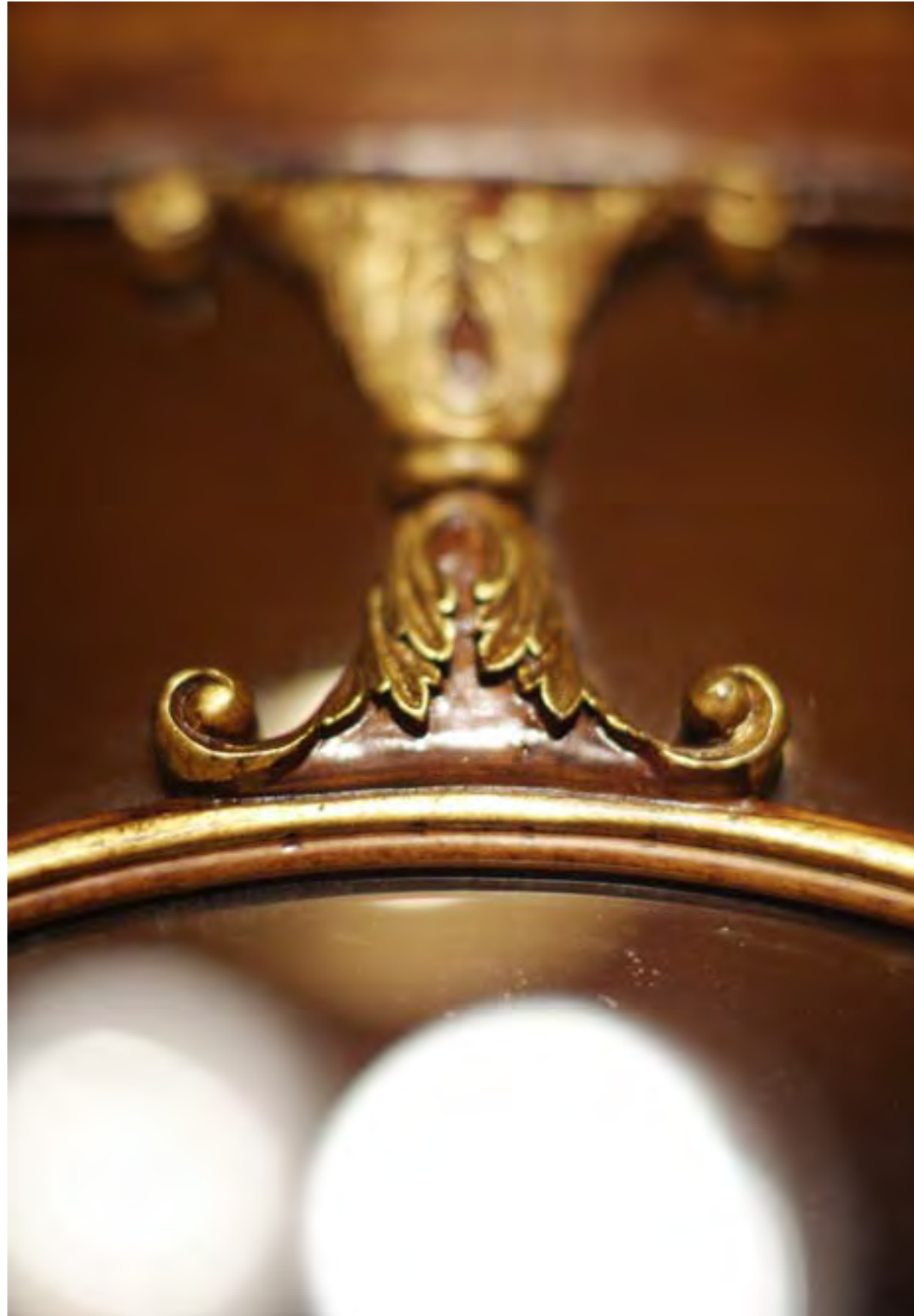


Narrow display cabinet with adjustable glass shelves within, the satinwood veneers having contrasting fine marquetry work to the frieze and cupboard front. Individually applied glazing bars with an églomisé and gilt swagged cartouche to the centre. Range sensitive lighting with touch controlled dimmer. The whole raised on gilded column legs.



NARROW SATINWOOD DISPLAY CABINET

493585-SAM | Heritage Portfolio



LEATHER

We offer a range of leathers, both pre-dyed and hand finished for achieving an antique appearance. Tooling or Blind Tooling in gold or silver finishes the piece. Leather stitching is also available.



Imposing and finely carved walnut writing table after an Italian original of c.1800, with inset green leather panels to the surface and three drawers, brass lions head details and shallow carved volute legs terminating in lions paw feet.



**ITALIAN LIONS PAW DESK
(LEATHER & WALNUT)**

492173-WAL | Heritage Portfolio

Dimension: W 64 x D 30 1/4 x H 30 3/4 inches



Crotch mahogany, professional style oval poker table with an antique green leather top, leather tooling with four currencies, hand crafted brass cup holders and chip racks, and a drawer for storing poker chips for each player.



MAHOGANY POKER TABLE

493199-MBL | Heritage Portfolio



JONATHAN'S SECRETS

June 2015 - High Point, NC - In this collection of writing desks, occasional furniture manufacturer Jonathan Charles unlocks the mystery of antique cabinets whose hidden compartments contain secrets of centuries past. Upon first glance, these 18th and 19th century-inspired designs appear to bear all; but behind their unassuming facade lies a treasure trove of secret drawers and stowaway shelves that still embody the spirit of the original antiques.

A display of Jonathan Charles' impressive craftsmanship prowess, each piece bears meticulous carvings and ornate inlays achieved only by their artisans who spend over a decade honing their skills to specialize in a particular technique. These artisans replicate every flourish, down to the hardware which is

custom-cast in their in-house foundry, to preserve the spirit of the original antiques.

Whether you're storing secret love letters of decades ago or emergency funds, these bureaus will safeguard your most prized possessions in style.

4
— SECRET —
COMPARTMENTS
★★★



QUEEN ANNE WALNUT BUREAU WITH CHINOISERIE INTERIOR & MİRRORED DOORS
494482-CWM | Heritage Portfolio

Modeled after an original circa 1710, the Queen Anne Glazed Walnut Bureau features an alluring mix of eglomise glass panels and crotch walnut veneer exterior that reveals a gilded chinoiserie relief set against a black painted canvas. Beyond the 21 visible drawers and 18 shelves, the bureau also features 4 secret compartments, including pull out trays and cupboards, hidden behind select shelves. Ogee moulded glazed panels on the top are a regal foil for the lower half of the bureau comprised of a fall front shelf with chinoiserie inlaid drawers and block footed base with two storage drawers.



2
- HIDDEN -
DRAWERS
★★★

WILLIAM & MARY WALNUT & OYSTER SECRETARY CABINET
492033-WAL | Heritage Portfolio

A marvel of Jonathan Charles' impeccable craftsmanship, the William & Mary Oyster Secretaire Cabinet on Stand contains more shelves and drawers than imaginable. Fine oyster veneered paneled doors open to reveal a fully fitted interior with églomisé lined shelves and multiple small drawers that pull out to reveal 2 hidden drawers. An open base with barley twist legs and serpentine stretchers add levity to the desk.



9
- HIDDEN -
DRAWERS
★★★

QUEEN ANNE POLLARD VENEER BUREAU CABINET WITH MIRRORED DOORS
494477-LRO | Heritage Portfolio

Modeled after an original circa 1710, the classic Queen Anne-style Bureau Cabinet stays true to the original design with fine pollarded oak veneers and a double domed top surmounted with carved and turned finials. Behind the antiqued mirrored doors lies a maze of 9 hidden drawers, cupboards, and discreet pigeonholes, all neatly tucked underneath a fully fitted interior with inset leather panels and architectural details.



JC ICONIC

CATEGORIES
by
JC ICONIC

[OPPOSITE]

Traditional Four Door Breakfront Display Cabinet | 495144-BLA
Small Gilded Sunburst Mirror | 494468-GIL



JC ICONIC

TABLES

[OPPOSITE]

Mahogany Round Poker Table | 493366-MAH
High Back Playing Card "Heart" Side Chair | 493383-SC-WAL
High Back Playing Card "Diamond" Side Chair | 493385-SC-WAL
High Back Playing Card "Club" Side Chair | 493387-SC-WAL
High Back Playing Card "Spade" Side Chair | 493389-SC-WAL



Crotch mahogany, professional style round poker table with an antique brown leather top, leather tooling with four currencies, hand crafted brass cup holders and chip racks set on a finely carved pedestal base.

MAHOGANY ROUND POKER TABLE

493366-MAH | Heritage Portfolio

Dimension: W 52 x D 52 x H 31 1/2 inches

Main Finish: Medium Antique Mahogany

Main Skill: Leather Inlay

Crotch mahogany, professional style oval poker table with an antique green leather top, leather tooling with four currencies, hand crafted brass cup holders and chip racks, and a drawer for storing poker chips for each player.

MAHOGANY POKER TABLE

493199-MBL | Heritage Portfolio

Dimension: W 94 x D 49 1/4 x H 31 1/2 inches

Main Finish: Bleached Mahogany

Main Skill: Leather Inlay





Substantial square walnut card table in the manner of William Kent with grotesque masks carved to the shoulders of the cabriole legs set on realistically carved lions paw feet. Inset tan leather top with brass cup holders.

WILLIAM KENT STYLE GAMES TABLE

493305-WAL | Heritage Portfolio

Dimension: W 44 5/8 x D 44 5/8 x H 31 5/8 inches

Main Finish: Medium Walnut

Main Skill: Wood Carving/Turning



Walnut and walnut veneered Regency style games and sofa table with chess and backgammon, pieces included. Inset reversible top reveals playing surfaces beneath. The whole on reeded sabre legs and antiqued brass castors.

REGENCY EXTENDING GAMES TABLE

493224-CWM | Heritage Portfolio

Dimension: W 36 7/8 x D 24 x H 30 inches

Main Finish: Medium Crotch Walnut

Main Skill: Veneer Marquetry



TABLES

Walnut square games table with oyster veneer the inlaid top set on a substantial barley twist column base heightened with finely carved details. Chess pieces included.

OYSTER VENEER GAMES TABLE

493501-WAL | Heritage Portfolio

Dimension: W 25 x D 25 x H 28 inches

Main Finish: Medium Walnut

Main Skill: Veneer Marquetry



TABLES

Elegant George I style mahogany veneered carved card table with a crotch mahogany top when closed and an green antique leather top when open. Fine Rococo style carvings all round and slender kick-out cabriole legs.

GEORGE I STYLE CARD TABLE (MAHOGANY)

493214-MAH | Heritage Portfolio

Dimension: W 36 x D 18 x H 30 7/8 inches

Main Finish: Medium Antique Mahogany

Main Skill: Wood Carving/Turning



Regency style satinwood veneered extending card table with hinged top and cantilever mechanism, hand painted with floral decoration to top and inlaid and painted playing cards within. Single drawer with antiqued brass handles.

SATINWOOD PAINTED CARD TABLE

492146-SAM | Heritage Portfolio

Dimension: W 36 1/4 x D 17 1/2 x H 28 3/8 inches

Main Finish: Medium Satinwood

Main Skill: Hand Painting





Oyster veneer circular coffee table with hand painted Italian gold leaf, églomisé decoration on the glass top set on barley twist legs above an openwork base.

CIRCULAR OYSTER & ÉGLOMISÉ COFFEE TABLE

493849-WAL | Heritage Portfolio

Dimension: W 48 x D 48 x H 20 inches

Main Finish: Medium Walnut

Main Skill: Églomisé



Oyster veneer coffee table with handpainted Italian gold leaf, églomisé decoration on the glass top set on barleytwist legs above an openwork base.

SQUARE OYSTER & ÉGLOMISÉ COFFEE TABLE (52")

492225-WAL-GED | Heritage Portfolio

Dimension: W 52 ½ x D 52 ½ x H 20 inches

Main Finish: Medium Walnut

Main Skill: Églomisé





Satinwood veneered oval coffee table with fine classical marquetry inlays of swags and sunbursts to the drawer, top and under-tier.

SHERATON SATINWOOD OVAL COFFEE TABLE

492661-SAL | Heritage Portfolio

Dimension: W 48 x D 37 1/8 x H 20 1/8 inches

Main Finish: Light Satinwood

Main Skill: Veneer Marquetry



Square oyster veneered coffee table with a leather inset top and two pull-out slides set on barleytwist columns and openwork base.

SQUARE OYSTER COFFEE TABLE WITH SLIDES

492098-WAL | Heritage Portfolio

Dimension:

W 36 1/4 x D 36 1/4 x H 22 inches

W 60 1/4 x D 36 1/4 x H 22 inches (Width folded)

Main Finish: Medium Walnut

Main Skill: Veneer Marquetry

TABLES



Louis XIV inspired rectangular coffee table, the satinwood top with fine running marquetry inlay set above a gilded frieze of floral motifs, further veneering to the under-tier and fluted gilt legs.

LOUIS XIV STYLE RECTANGULAR COFFEE TABLE
494127-GIL | Heritage Portfolio

Dimension: W 54 x D 32 x H 20 inches
Main Finish: Light Antique Gold-leaf
Main Skill: Gilding



Louis XIV inspired square coffee table, the satinwood top with fine running marquetry inlay set above a gilded frieze of floral motifs, further veneering to the undertier and fluted gilt legs.

LOUIS XIV STYLE SQUARE COFFEE TABLE
494143-GIL | Heritage Portfolio

Dimension: W 52 ½ x D 52 ½ x H 20 inches
Main Finish: Light Antique Gold-leaf
Main Skill: Gilding



Walnut and burl walnut rectangular finely inlaid coffee table with an all-over design of swirling arabesques above a shaped under-tier and fluted tapering legs.

SEAWEED RECTANGULAR COFFEE TABLE
493780-BWM | Heritage Portfolio

Dimension: W 50 x D 32 x H 20 inches
Main Finish: Medium Burr Walnut
Main Skill: Veneer Marquetry



TABLES

Louis XIV style square side table with gilded drawer front and legs, shaped under-tier and a fine marquetry inlaid satinwood top. Attractive semi-engaged floral garland to drawer base.

LOUIS XIV STYLE SQUARE SIDE TABLE

493286-GIL | Heritage Portfolio

Dimension: W 24 x D 24 x H 25 inches

Main Finish: Light Antique Gold-leaf

Main Skill: Gilding



Art Deco inspired console table in an exotic satin santos rosewood finish with ebonised legs.

ART DECO SATIN CONSOLE TABLE

494086-SAS
Modern Portfolio

Dimension: W 48 x D 14 x H 33 inches

Main Finish: Santos Rosewood Satin

Main Skill: Veneer Marquetry



TABLES

Louis IV style narrow console with gilded drawer front and legs and a fine marquetry inlaid satinwood top. Attractive semi-engaged floral garland to drawer base.

LOUIS IV STYLE NARROW GILDED CONSOLE

493239-GIL | Heritage Portfolio

Dimension: W 57 ¾ x D 13 ¾ x H 37 ½ inches

Main Finish: Light Antique Gold-leaf

Main Skill: Gilding



Neo-classical demilune console table with fine gilded acanthus leaves to the drawer and running up the legs, and a satinwood marquetry top inlaid with floral motifs. After an original of c.1780.

GILDED CONSOLE WITH SHELF (LARGE)

493187-GIL | Heritage Portfolio

Dimension: W 59 ¾ x D 20 ¾ x H 33 ½ inches

Main Finish: Light Antique Gold-leaf

Main Skill: Gilding



TABLES



Neo-classical demilune console table with fine gilded acanthus leaves to the drawer and running up the legs, and a satinwood marquetry top inlaid with floral motifs. After an original of c.1780.

SMALL GILDED CONSOLE WITH SHELF

493208-GIL | Heritage Portfolio

Dimension: W 46 3/8 x D 18 7/8 x H 33 1/8 inches

Main Finish: Light Antique Gold-leaf

Main Skill: Gilding



Adam style satinwood and gilded demilune console with fine carved detail of a running band of flowers repeated in the inlay on the top. The fluted gilded legs with an acanthus carved capital.

GILDED DEMILUNE CONSOLE

493226-GIL | Heritage Portfolio

Dimension: W 46 3/8 x D 19 1/4 x H 33 1/8 inches

Main Finish: Light Antique Gold-leaf

Main Skill: Gilding



Neapolitan baroque style marble-topped gilded console table, the oversize legs and frieze with heavy carving, and with a finely detailed stretcher crowned with a floral ornament. After an original of c1660.

MARBLE TOPPED BAROQUE GILDED CONSOLE

493558-GIL | Heritage Portfolio

Dimension: W 66 7/8 x D 15 3/4 x H 35 5/8 inches

Main Finish: Light Antique Gold-leaf

Main Skill: Gilding



TABLES



Spectacular finely carved and gilded sofa table inspired by early 19th century French Empire style furniture of a naturalistically modelled wing pedestal set on a black organically shaped base.

EMPIRE STYLE WINGED SOFA TABLE

495100-GIL | Modern Portfolio

Dimension: W 26 ¼ x D 14 ½ x H 26 inches

Main Finish: Light Antique Gold-leaf

Main Skill: Gilding



Spectacular finely carved and gilded side table inspired by early 19th century French Empire style furniture of a naturalistically modelled three winged base set and a circular glass top.

THREE WINGED END TABLE

494982-GIL | Modern Portfolio

Dimension: W 18 x D 18 x H 26 inches

Main Finish: Light Antique Gold-leaf

Main Skill: Gilding



Rococo style gilded console table with finely carved floral ornament, the floor standing bracket leg terminating in a lions paw foot. Scagliola demilune top. After an original of the early 18th century.

CARVED & GILDED BRACKET CONSOLE (SCAGLIOLA TOP)

494353-GIL-SG01 | Heritage Portfolio

Dimension: W 24 x D 10 x H 35 ¼ inches

Main Finish: Light Antique Gold-leaf

Main Skill: Gilding



TABLES



Regency style crotch mahogany veneered and crossbanded square side table with one drawer and under-tier on barleytwist turned legs. Finely cast brass drawer handles in the rococo taste.

REGENCY STYLE SQUARE SIDE TABLE (MAHOGANY)

492268-MAH | Heritage Portfolio

Dimension: W 24 x D 29 x H 28 inches
Main Finish: Medium Antique Mahogany
Main Skill: Veneer Marquetry



Sheraton inspired finely inlaid oval side table with swagged classical motifs and single drawer set on a kidney shaped undertier and four carved legs. The original of c.1780.

SHERATON STYLE SWAGGED OVAL SIDE TABLE

495092-SAL | Heritage Portfolio

Dimension: W 34 x D 22 ½ x H 28 ¾ inches
Main Finish: Light Satinwood
Main Skill: Veneer Marquetry



Demilune bedside or lamp table in walnut and crotch walnut veneer or mahogany with contrasting stringing inlay, two drawers and finely cast brass handles. Tapering square legs set on spade feet.

CROTCH WALNUT DEMILUNE NARROW TABLES

493929-CWM
 Heritage Portfolio

Dimension: W 22 ¼ x D 13 ¾ x H 35 inches
Main Finish: Medium Crotch Walnut
Main Skill: Veneer Marquetry

TABLES



Small occasional table with a round silver leaf, églomisé top on a carved slender barley twist stem and angular shaped tripod legs.

ÉGLOMISÉ & WALNUT ROUND WINE TABLE

492134-WAL | Heritage Portfolio

Dimension: W 24 x D 24 x H 28 inches
Main Finish: Medium Walnut
Main Skill: Églomisé



24" Classic George I style mahogany pie crust lamp table with fine carving to the baluster columns and tripod base, antiqued brass details.

LARGE MAHOGANY "PIECRUST" LAMP TABLE

492517-24D-MAH | Heritage Portfolio

Dimension: W 24 x D 24 x H 29 inches
Main Finish: Medium Antique Mahogany
Main Skill: Veneer Marquetry



George I style wine table with decorative inlaid oyster veneer and with twenty small wood circles around the edge. Set on a swollen baluster tripod base heightened with acanthus leaf carving.

GEORGE I OYSTER ROUND TABLE

492265-WAL | Heritage Portfolio

Dimension: W 28 x D 28 x H 28 7/8 inches
Main Finish: Medium Walnut
Main Skill: Veneer Marquetry



Walnut and oyster veneer lamp table with fine decorative veneers on the top and sides on a shallow carved tripod base with patinated brass collar detail.

OYSTER VENEER LAMP TABLE

492057-WAL | Heritage Portfolio

Dimension: W 26 1/2 x D 26 1/2 x H 29 inches
Main Finish: Medium Walnut
Main Skill: Veneer Marquetry



TABLES

Sheraton style satinwood veneered pembroke table with a radiating inlaid top, single drawer and drop leaves forming an oval when opened, standing on tapering square legs highlighted with fine floral inlays. After an original of c.1770.

SATINWOOD PEMBROKE TABLE (SMALL)

492671 | Heritage Portfolio

Dimension: W 29 x D 21 x H 27 inches

Main Finish: Medium Satinwood

Main Skill: Veneer Marquetry



Elegant Biedermeier inspired sofa or side table of great simplicity and style, the rectangular top veneered in crotch walnut and with a single drawer, set on a semi-circular support with splayed legs and brass capped castors.

BIEDERMEIER CROTCH WALNUT SIDE TABLE

494456-CWM | Heritage Portfolio

Dimension: W 48 x D 14 x H 32 inches

Main Finish: Medium Crotch Walnut

Main Skill: Veneer Marquetry



Unusual walnut and satinwood veneered tray lamp table (removable top) with finely carved details to the tray and cabriole legs as well as Rococo cast brass floral handles to the two drawers. Inspired by English furniture of the 1720's.

TRAY LAMP TABLE WALNUT AND SATINWOOD

492560-SAM | Heritage Portfolio

Dimension: W 16 1/2 x D 16 1/2 x H 30 3/4 inches

Main Finish: Medium Satinwood

Main Skill: Veneer Marquetry



William Yeoward
Accessories
Mirrors
Shelves & Etagères
Desks & Secretaries
Nightstands & Chests
Beds
Cabinets
Bars
Sideboards & Buffets
Seating

Tables

TABLES

Contemporary round two-tiered glass drinks table with a sleek brass tripod base, and a handle for ease of transport.

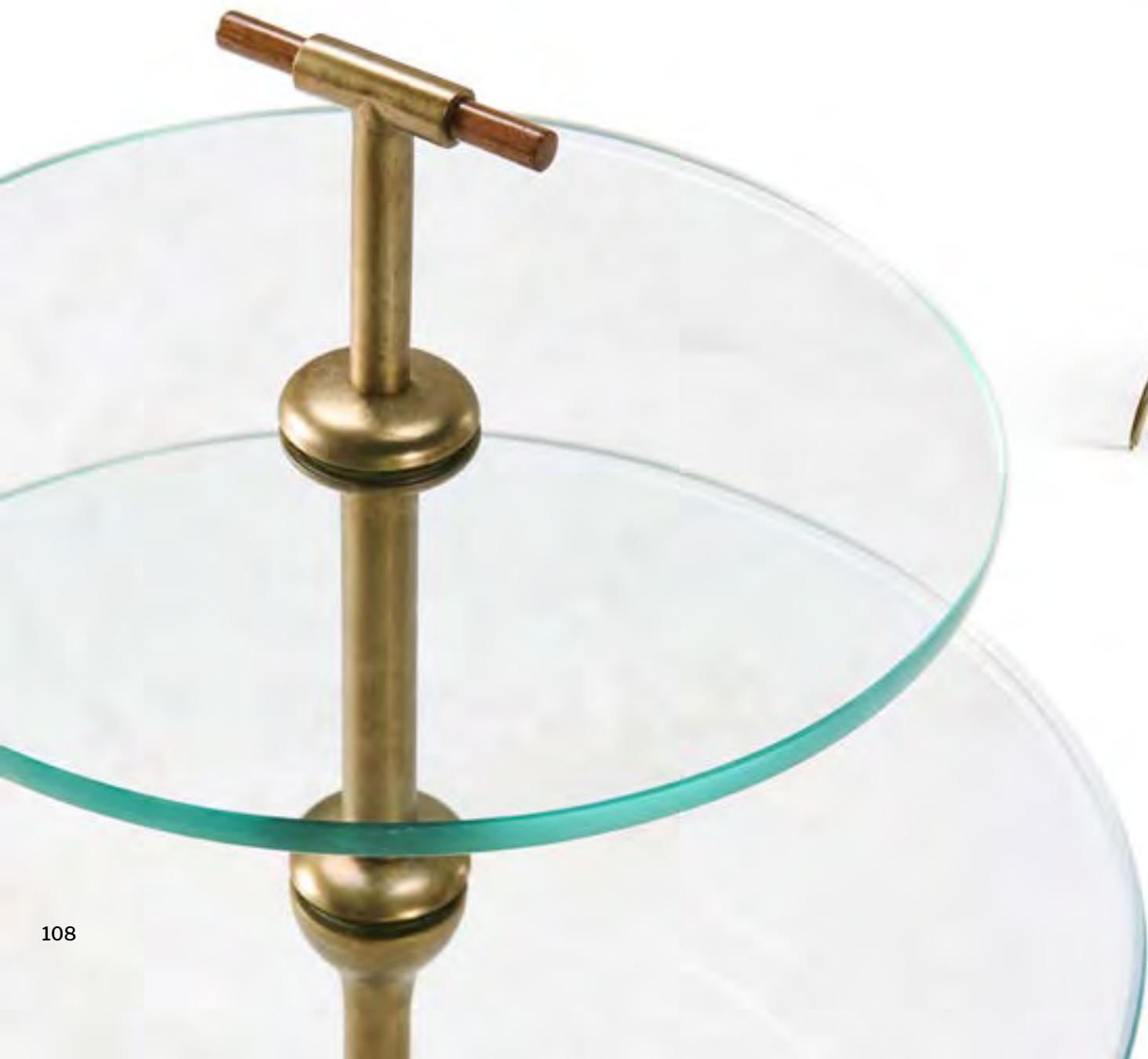
BRASS & GLASS ROUND DRINKS TABLE

495355-LAB | Modern Portfolio

Dimension: W 16 x D 16 x H 32 inches

Main Finish: Light Antique Brass

Main Skill: Hand Casting



End table in antique brass finish with an antique mirror top.

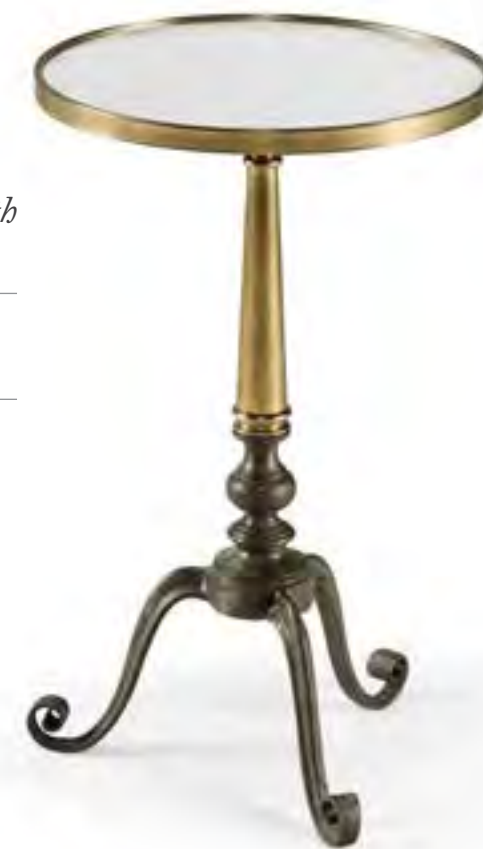
ANTIQUE BRASS END TABLE

500062-ABF | Modern Portfolio

Dimension: W 15 3/4 x D 15 3/4 x H 25 3/4 inches

Main Finish: Antiqued Brass

Main Skill: Metal Fabrication



A side table with an octagonal santos rosewood top and antique brass edging over a turned pedestal base in charcoal with gilding.

BUCKINGHAM OCTAGONAL SIDE TABLE

495908-CRO | Heritage Portfolio

Dimension: W 19 3/4 x D 14 1/2 x H 25 inches

Main Finish: Antiqued Brass

Main Skill: Wood Carving/Turning



TABLES



Contemporary styled patinated lacquered brass and glass rectangular side table with two tiers and legs set on an angle. Inspired by French avant garde design of the 1920s.

BRASS & GLASS END TABLE

494975-LAB | Modern Portfolio

Dimension: W 16 x D 28 x H 24 ½ inches

Main Finish: Light Antique Brass

Main Skill: Hand Casting



Frame is fabricated from brass and stainless steel with acid dipped, hand rubbed patina. Top features figured Calacatta marble from northern Tuscany.

HAMILTON OVAL COCKTAIL TABLES

496064-SDG-M025 | Heritage Portfolio

Dimension: W 60 x D 30 x H 17 inches

Main Finish: Dark Gun Metal

Main Skill: Metal Fabrication



Contemporary styled patinated lacquered brass and glass round lamp/drinks table with two tiers and the rounded legs with hollow profile. Inspired by French avant garde design of the 1920s.

COSMO ANTIQUE BRASS DRINKS TABLE

494976-LAB | Modern Portfolio

Dimension: W 12 ¾ x D 12 ½ x H 24 ½ inches

Main Finish: Light Antique Brass

Main Skill: Hand Casting



Round lamp table with side cut-outs in a dalmatian eggshell finish with smoky black lacquer details and top.

DALMATIAN EGGSHELL ROUND CUT-OUT LAMP TABLE

495511-ED001 | Modern Portfolio

Dimension: W 16 x D 16 x H 22 ¼ inches

Main Finish: Dalmatian Eggshell

Main Skill: Eggshell



TABLES

Mahogany and marquetry inlay oval lamp table with single drawer and with profuse floral marquetry design and swagged details on a baluster carved tripod base. Inspired by English neo-classical decoration.

MAHOGANY OVAL MARQUETRY LAMP TABLE

499065-MAH | Heritage Portfolio

Dimension: W 34 x D 22 ½ x H 28 ¾ inches

Main Finish: Medium Antique Mahogany

Main Skill: Veneer Marquetry



Regency style burl oak veneered and cross banded Pembroke table with a mother of pearl inlaid top, twin drawers, serpentine shaped drop leaves and standing on fluted tapering legs with brass capped feet.

BURL & MOTHER OF PEARL RECTANGLE PEMBROKE TABLE

499212-BRW-MOP | Heritage Portfolio

Dimension: W 38 ¾ x D 27 x H 27 inches

Main Finish: Light Burr Walnut Lustre

Main Skill: Veneer Marquetry



TABLES



Powerfully designed crotch mahogany veneered circular centre table with baluster central column and scrolling ebonised legs set on a trefoil base with finely carved and gilded lions paw feet.

MAHOGANY CENTRE TABLE WITH GILDED LIONS PAW FEET

495059-BMA | Heritage Portfolio

Dimension: W 36 x D 36 x H 30 1/8 inches
Main Finish: Antique Mahogany Brown - High Lustre
Main Skill: Wood Carving/Turning



Rococo style mahogany and brass side table with hand painted, églomisé finish and intense lapis blue tone. Finely cast brass legs support a small round shelf.

LAPIS BLUE ÉGLOMISÉ SIDE TABLE

492454-MAH-GEB | Heritage Portfolio

Dimension: W 26 1/2 x D 26 1/2 x H 30 inches
Main Finish: Medium Antique Mahogany
Main Skill: Hand Casting



Rococo style round table with oyster veneer top with drawers on a lost wax cast brass base with a small shelf in the centre.

OYSTER ROUND TABLE ON BRASS BASE

492096-WAL | Heritage Portfolio

Dimension: W 34 1/2 x D 34 1/2 x H 30 1/4 inches
Main Finish: Medium Walnut
Main Skill: Hand Casting



TABLES

Sheraton inspired finely inlaid lamp table or work box with a heart shaped lidded top and undertier of classical motifs. Detailed carving to the three legs.

SHERATON STYLE "HEART" WORK BOX

495090-SAL | Heritage Portfolio

Dimension: W 14 x D 14 x H 26 inches

Main Finish: Light Satinwood

Main Skill: Wood Carving/Turning



Sheraton inspired finely inlaid lamp table or work box with multiple lobed shaped lidded top set on a carved column and four splayed legs.

SHERATON STYLE LOBED WORK BOX

495091-SAL | Heritage Portfolio

Dimension: W 20 x D 14 x H 26 ¼ inches

Main Finish: Light Satinwood

Main Skill: Wood Carving/Turning





Elegant and practical flip top satinwood veneered circular centre table with fine neoclassical veneers set on a baluster column and scolling trefoil base. Inspired by Sheraton designs of the late eighteenth century.

SHERATON STYLE FLIP TOP CENTRE TABLE

495058-SAL | Heritage Portfolio

Dimension: W 48 x D 48 x H 30 inches

Main Finish: Light Satinwood

Main Skill: Veneer Marquetry



Walnut and marquetry veneered centre table on a carved pedestal base and ball and claw carved feet, with hand painted floral detail on the table top.

BALL & CLAW CENTRE TABLE (SATINWOOD)

492151-SAL | Heritage Portfolio

Dimension: W 48 x D 48 x H 31 1/2 inches

Main Finish: Light Satinwood

Main Skill: Veneer Marquetry

Walnut parquetry centre table with reeded baluster stem and a tripod base.

PARQUETRY WALNUT CENTRE TABLE

492086 | Heritage Portfolio

Dimension: W 42 x D 42 x H 29 3/4 inches

Main Finish: Light Walnut

Main Skill: Veneer Marquetry



TABLES

The Fulgurite drum table from Jonathan Charles' Buckingham portfolio makes an enchanting accent piece for sitting areas and living spaces. A circular hardwood top wrapped in mahogany crotch veneer with Mont Blanc leather inlay. An elegant base carved in a traditional style by Jonathan Charles' renowned craftsmen balances on 3 gently sloped legs ending in castored feet for added versatility.

BLEACHED MAHOGANY DRUM TABLE

492611-MBL-L030 | Heritage Portfolio

Dimension: W 31 x D 31 x H 28 ¼ inches

Main Finish: Bleached Mahogany

Main Skill: Leather Inlay



Italian Baroque style centre table with an elaborately detailed cast brass base and a crotch mahogany veneered hexagonal top.

BAROQUE BRASS CENTRE TABLE

492534-MAH | Heritage Portfolio

Dimension: W 39 ¼ x D 33 ¾ x H 29 ½ inches

Main Finish: Medium Antique Mahogany

Main Skill: Hand Casting



Sheraton inspired finely inlaid lamp table with a gently curved nine sided top of classical motifs. Set on a swollen baluster column above three curved legs.

FINELY INLAID LAMP TABLE WITH NINE SIDED TOP

495074-SAL | Heritage Portfolio

Dimension: W 26 x D 26 x H 26 ¾ inches

Main Finish: Light Satinwood

Main Skill: Wood Carving/Turning



TABLES



Fine round mahogany centre table with serpentine apron, acanthus carved stem and palmette detail to base, and marquetry inlay. After an original of c.1850.

FINELY INLAID MAHOGANY CENTRE TABLE

492846-MAH | Heritage Portfolio

Dimension: W 48 x D 48 x H 31 ½ inches

Main Finish: Medium Antique Mahogany

Main Skill: Veneer Marquetry



Round tilting pedestal centre table with Regency penwork style black painted detailing. After a design of c.1800.

PENWORK STYLE TABLE (BLACK)

493142-PBF | Heritage Portfolio

Dimension: W 34 ¾ x D 34 ¾ x H 28 ¾ inches

Main Finish: Painted Black Floral

Main Skill: Hand Painting



TABLES

Walnut nest of two tables with inset leather panels to the tops and sides, barley twist legs and stretchers and a single drawer to the smaller table.

PAIR OF NESTING WALNUT TABLES

492027-WAL | Heritage Portfolio

Dimension: W 24 x D 16 x H 28 inches

Main Finish: Medium Walnut

Main Skill: Wood Carving/Turning



Elegant set of two mahogany nesting tables with antiqued inset leather panels and finely carved tapering legs with brass feet.

MAHOGANY AND LEATHER INLAID NEST OF TABLES WITH DRAWER

499188 | Heritage Portfolio

Dimension: W 24 x D 16 x H 28 1/2 inches

Main Finish: Medium Antique Mahogany High Lustre

Main Skill: Wood Carving/Turning



Regency style mahogany veneered nest of four tables the tops crossbanded and supported on slender turned faux bamboo legs above yoke shaped stretchers and shaped feet.

REGENCY MAHOGANY NESTING TABLES

492600-MAH | Heritage Portfolio

Dimension: W 23 1/2 x D 15 1/2 x H 29 1/2 inches

Main Finish: Medium Antique Mahogany

Main Skill: Veneer Marquetry



TABLES

Decorative round nesting tables with very fine inlays resembling feathers to the tops, and contemporary styled sweeping steel bases.



FEATHER INLAY NEST OF TABLES

494959-ZEB | Modern Portfolio

Dimension: W 18 x D 18 x H 24 inches

Main Finish: Medium Zebrano

Main Skill: Veneer Marquetry

Round stainless steel based side table with a finely feather inlaid top.

FEATHER INLAY & STAINLESS STEEL ROUND SIDE TABLE

495448-ZEB | Modern Portfolio

Dimension: W 20 x D 20 x H 26 inches

Main Finish: Light Antique Brass

Main Skill: Veneer Marquetry



Decorative coffee table inspired by English Regency models the circular top with fine feather inlays, set above an ebonised detail carved double four pangolin style base with brass stretcher and caps on the feet.

SEAWEED RECTANGULAR COFFEE TABLE

495633-ZEB | Modern Portfolio

Dimension: W 51 ¼ x D 51 ¼ x H 20 inches

Main Finish: Medium Zebrano

Main Skill: Veneer Marquetry



TABLES



Stunning console table with hand turned legs and a Seaweed Marquetry inlaid top, sides and drawer fronts.

SMALL SEAWEED MARQUETRY CONSOLE

493169 | Heritage Portfolio

Dimension: W 42 x D 17 x H 32 inches

Main Finish: Medium Burr Walnut

Main Skill: Wood Carving/Turning



Imposing mahogany veneered rococo style console table with fine shallow carved floral details to legs and the single long drawer standing on four cabriole legs with stylized lions paw feet. After an Irish original of c1730.

IRISH ROCOCO MAHOGANY CONSOLE

494072-MAH | Heritage Portfolio

Dimension: W 63 1/2 x D 20 3/4 x H 36 3/4 inches

Main Finish: Medium Antique Mahogany

Main Skill: Wood Carving/Turning

TABLES

Neo-classical twin pedestal mahogany dining table with two self-storing leaves that can be opened individually, cross banding to the top and contrasting veneers to the pedestals.

CURVED PEDESTAL EXTENDING DINING TABLE

493380-92L-MAH | Heritage Portfolio

Dimension:

W 91 ¾ x D 46 x H 30 inches

W 109 x D 46 x H 30 inches (with 1 leaf)

W 126 ¾ x D 46 x H 30 inches (with 2 leaves)

Leaf quantity: 2

Leaf size: 17 ¾ inches (45 cm)

Seats: 8

Seats with 1 leaf: 10

Seats with 2 leaves: 12

Main Finish: Medium Antique Mahogany

Main Skill: Wood Carving/Turning



Walnut crossbanded Regency style rectangular centre or breakfast table set on a curved pedestal base heightened with fine shallow carved acanthus detail and scrolling palmette feet.

REGENCY RECTANGULAR CENTRE TABLE ON PEDESTAL BASE (CROTCH WALNUT)

494408-CWM | Heritage Portfolio

Dimension: W 59 x D 29 ½ x H 30 inches

Main Finish: Medium Crotch Walnut

Main Skill: Wood Carving/Turning



Related Products



492472-AC-MAH-F200



492472-SC-MAH-F200



494347-AC-CWM-F200



494072-MAH



494842-MAH

TABLES



Classic Regency style fixed top dining table with fine crotch mahogany veneers. Set on twin pedestal baluster bases. After a design of c1820.

79" REGENCY FIXED TOP MAHOGANY DINING TABLE

493507-79L-MAH | Heritage Portfolio

Dimension: W 78 ¾ x D 39 ¾ x H 30 inches

Seats: 8

Main Finish: Medium Antique Mahogany

Main Skill: Veneer Marquetry



Classic regency style single self-storing leaf extending dining table with fine crotch mahogany veneers to the top. Set on twin pedestal baluster bases. After a design of c.1820.

REGENCY MAHOGANY EXTENDING DINING TABLE

492266-75L-MAH | Heritage Portfolio

Dimension:

W 75 ½ x D 46 ½ x H 30 inches

W 93 ¾ x D 46 ½ x H 30 inches (with 1 leaf)

Leaf quantity: 1

Leaf size: 17 ¾ inches

Seats: 6

Seats with 1 leaf: 8

Main Finish: Medium Antique Mahogany

Main Skill: Veneer Marquetry



REGENCY CROUCH WALNUT EXTENDING DINING TABLE

492266-75L-CWM

Related Products



492476-AC-MAH-F200



492476-SC-MAH-F200



492472-AC-MAH-F200



492472-SC-MAH-F200



492260-MAH



492637-MAH



TABLES

Impressive regency style triple pedestal dining table with lightly distressed crotch mahogany veneers and two self-storing leaves. The heavily carved pedestals with acanthus details set on palmettes to the base. Seats: 12 + 2 + 2.

158" MAHOGANY TRIPLE PEDESTAL DINING TABLE

493594-158L-MAH | Heritage Portfolio

Dimension:

W 158 ¾ x D 55 ½ x H 30 inches

W 180 ½ x D 55 ½ x H 30 inches (with 1 leaf)

W 202 ½ x D 55 ½ x H 30 inches (with 2 leaves)

Leaf quantity: 2

Leaf size: 22 inches

Seats: 12

Seats with 1 leaf: 14

Seats with 2 leaves: 16

Main Finish: Medium Antique Mahogany

Main Skill: Veneer Marquetry



158" CROUCH WALNUT TRIPLE PEDESTAL DINING TABLE

493594-158L-CWM | Heritage Portfolio

Dimension:

W 158 ¾ x D 55 ½ x H 30 inches

W 180 ½ x D 55 ½ x H 30 inches (with 1 leaf)

W 202 ½ x D 55 ½ x H 30 inches (with 2 leaves)

Leaf quantity: 2

Leaf size: 22 inches

Seats: 12

Seats with 1 leaf: 14

Seats with 2 leaves: 16

Main Finish: Medium Crotch Walnut

Main Skill: Veneer Marquetry



Related Products



492836-AC-MAH-F200



492836-SC-MAH-F200



494842-MAH



493156-MAH



494408-CWM

48" French country style extending dark brown oak round dining table with a heavy pedestal base, a distressed planked top, exposed butterfly joints and single self-storing leaf.

48" EXTENDING DARK OAK COUNTRY TABLE

493372-48D-TDO | Heritage Portfolio

Dimension:

W 48 x D 48 x H 30 inches
W 70 x D 48 x H 30 inches (with 1 leaf)

Main Finish: Dark Brown Tudor Oak

Main Skill: Wood Carving/Turning

Leaf quantity: 1

Leaf size: 21 ¾ inches

Seats: 6

Seats with 1 leaf: 8



Related Products



493381-AC-TDO



493402-SC-TDO



493146-TDO



66" Late Regency style extending walnut circle-to-circle dining table with eight interlocking leaves and a Wellington cabinet for storage of the leaves with false drawer. Seats up to 10 people when fully extended.

66" WALNUT EXTENDING CIRCULAR DINING TABLE WITH STORAGE CABINET FOR LEAVES

493070-66D-CWM | Heritage Portfolio

Dimension:

W 66 x D 66 x H 30 inches
W 90 x D 90 x H 30 inches (with leaves)

Main Finish: Medium Crotch Walnut

Main Skill: Veneer Marquetry

Seats: 8

Seats with leaves: 12

Cabinet stores 8 leaves: W 37 ½ D 18 ¼ H 42 ¼ inches



Related Products



492472-AC-MAH-F200



492472-SC-MAH-F200



494347-AC-CWM-F200



STORAGE CABINET FOR LEAVES

TABLES



96" Elegant Biedermeier inspired oval dining table of great simplicity and style, veneered in mahogany and with fine inlaid stringing set on curved supports with splayed legs and brass capped castors. The original of c.1800.

96" BIEDERMEIER STYLE MAHOGANY OVAL DINING TABLE

494642-96D-MAH | Heritage Portfolio

Dimension: W 96 x D 60 x H 30 inches

Apron height: 26 3/4 inches

Seats: 8

Main Finish: Medium Antique Mahogany

Main Skill: Veneer Marquetry



Related Products



494347-AC-MAH-F200



494347-SC-MAH-F200



493156-MAH

TABLES

87" FUSION RECTANGULAR CHINOISERIE ANTIQUE ETCHED BRASS DINING TABLE

500347-87L-BAE | Modern Portfolio

Dimension: W 86 3/4 x D 39 3/4 x H 29 7/8 inches

Apron height: 29 1/4 inches

Seats: 8

Main Finish: Antique Etched Brass

Main Skill: Etching Brass



Related Products



500250-AC1-LBG-F048



500250-SC-LBG-F048



500226-BAE-ENO





JC ICONIC

SEATING

[OPPOSITE]

Art Deco Style Sectaire With Stainless Steel (Satin) | 494335-SAS-ST5
Empire Angel Wing ArmChair | 494590-AC-WAL-L009

Neo-classical Adam style mahogany armchair & side chair with profuse carving to the curved lyre splat back highlighted with gilded details, repeated on the arms which are specially designed to sit under the dining table. Serpentine front rail with gilded paterae and tapering square cross section front legs. Upholstered seat in Skipper. After an original of c.1770.

BUCKINGHAM GILDED LYRE BACK CHAIR

Heritage Portfolio
Main Finish: Medium Antique Mahogany
Main Skill: Wood Carving/Turning



SIDE CHAIR
 492836-SC-MAH-F200

Dimension: W 23 x D 24 x H 43 ¼ inches

ARMCHAIR
 492836-AC-MAH-F200

Dimension: W 24 ¾ x D 25 ¼ x H 43 ¼ inches



Related Products



493594-158L-MAH

494408-CWM

494842-MAH

Sheraton style light burl walnut dining armchair & side chair with an open oval back, the splat with decorative gilded neoclassical carving and a fleur-de-lys type ornament. Sweeping arms around a medium antique chestnut leather seat, and further shallow carved gilded floral designs to the serpentine rail and cabriole legs terminating in a ball foot.

SHERATON STYLE BURL WALNUT OVAL BACK CHAIR

Heritage Portfolio
Main Finish: Light Burr Walnut Lustre
Main Skill: Gilding



SIDE CHAIR
 498088-SC-BRW-L011

Dimension: W 21 ½ x D 23 ½ x H 41 ¾ inches

ARMCHAIR
 498088-AC-BRW-L011

Dimension: W 24 ¾ x D 23 ½ x H 41 ¾ inches



SHERATON STYLE WALNUT & GILDED OVAL BACK ARMCHAIR
 492951-AC-WAL-GIL-F001

SHERATON STYLE WALNUT & GILDED OVAL BACK SIDE CHAIR
 492951-SC-WAL-GIL-F001

SEATING

Classic Chippendale style distressed antique mahogany armchair & side chair, the serpentine top rail above a flat pierced and shaped splat with a gothic quatrefoil to the base, shaped scrolling arms around a neutral upholstered drop-in seat in F200 and plain square-legged base.

BUCKINGHAM CHIPPENDALE ANTIQUE MAHOGANY CHAIR

Heritage Portfolio

Main Finish: Medium Antique Mahogany

Main Skill: Wood Carving/Turning



SIDE CHAIR

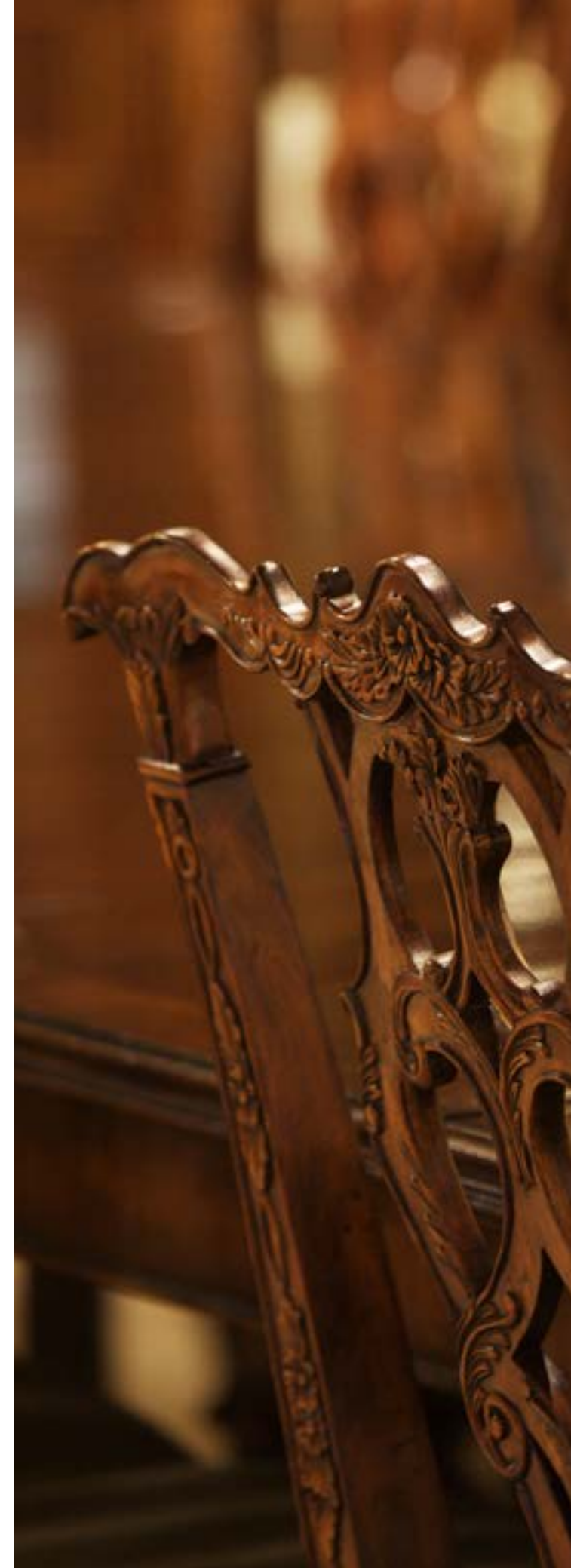
493330-SC-MAH-F200

Dimension: W 22 x D 25 3/4 x H 40 3/8 inches

ARMCHAIR

493330-AC-MAH-F200

Dimension: W 24 3/4 x D 25 x H 40 3/8 inches



Finely carved Chippendale style rococo armchair & side chair with a crested serpentine top rail above a pierced splat with floral decoration and a gothic quatrefoil. Sweeping arms with carved details around a neutrally upholstered seat in Skipper set on straight pannelle legs with running garlands. After an original of c.1770.

CHIPPENDALE ROCOCO QUATREFOIL CHAIR

Heritage Portfolio

Main Finish: Medium Antique Mahogany

Main Skill: Wood Carving/Turning

SIDE CHAIR

492472-SC-MAH-F200

Dimension: W 21 3/4 x D 22 1/4 x H 39 1/4 inches

ARMCHAIR

492472-AC-MAH-F200

Dimension: W 25 3/4 x D 22 1/4 x H 39 1/4 inches



Related Products



492266-75L-MAH



493380-92L-MAH



494408-CWM

SEATING

Elegant late 18th century style mahogany armchair & side chair, the undulating top rail above an openwork back with finely carved and pierced splat with floral detail, the neutrally upholstered seat in Skipper supported on slender cabriole legs with further carved decoration.

MAHOGANY 18TH CENTURY DINING CHAIR

Heritage Portfolio

Main Finish: Medium Antique Mahogany

Main Skill: Wood Carving/Turning

SIDE CHAIR

492476-SC-MAH-F200

Dimension: W 22 x D 22 ¾ x H 40 ¼ inches

ARMCHAIR

492476-AC-MAH-F200

Dimension: W 24 x D 22 ¾ x H 40 ¼ inches



Sheraton armchair & side chair with Shield Back in Mahogany High Gloss and MOP Details, Upholstered in F200.

SHERATON CHAIR WITH SHIELD BACK IN MAHOGANY HIGH GLOSS & MOP DETAILS

Heritage Portfolio

Main Finish: Medium Antique Mahogany High Lustre

Main Skill: Wood Carving/Turning



SIDE CHAIR

499511-SC-MAM-MOP-F200

Dimension: W 22 x D 23 ½ x H 38 inches

ARMCHAIR

499511-AC-MAM-MOP-F200

Dimension: W 22 x D 23 ½ x H 38 inches

Related Products



492266-75L-MAH



493507-79L-MAH



492637-MAH



492260-MAH

SEATING

Classic Regency style dining armchair & side chair with mahogany and crossbanded upper and lower curved back rails, with twin opposing lancet arch splats between. Reeded arms, uprights and front legs, plain upholstered seat in Skipper.

REGENCY MAHOGANY CURVED BACK CHAIR

Heritage Portfolio

Main Finish: Medium Antique Mahogany

Main Skill: Wood Carving/Turning



SIDE CHAIR

494347-SC-MAH-F200

ARMCHAIR

494347-AC-MAH-F200

Dimension: W 19 x D 22 x H 37 inches

Dimension: W 23 1/8 x D 21 3/4 x H 36 7/8 inches



REGENCY CROTCH WALNUT CURVED BACK ARMCHAIR

494347-AC-CWM-F200

REGENCY CROTCH WALNUT CURVED BACK SIDE CHAIR

494347-SC-CWM-F200



Related Products



493594-158L-MAH



493380-92L-MAH



494408-CWM



493070-66D-CWM



494642-96D-MAH



494842-MAH



Three seater Regency walnut curved back bench, crossbanded upper and lower curved back rails, with twin opposing lancet arch splats between. Reeded arms, uprights and front legs, plain upholstered seat in Mazo.

REGENCY WALNUT THREE SEATER BENCH

495627-CWM-F001 | Heritage Portfolio

Dimension: W 72 x D 22 1/2 x H 37 inches

Main Finish: Medium Crotch Walnut

Main Skill: Wood Carving/Turning

Classic Regency style black painted dining side chair with gilded highlights, the twin opposing lancet arch splats between upper and lower curved back rails. Uprights and front legs, plain upholstered seat in Skipper (F200). Based on an original of c.1820.

REGENCY BLACK PAINTED CURVED BACK CHAIR

Heritage Portfolio

Main Finish: Ebonised

Main Skill: Gilding



SIDE CHAIR

494347-SC-EBF-F200

ARMCHAIR

494347-AC-EBF-F200

Dimension: W 19 x D 22 x H 37 inches

Dimension: W 23 1/8 x D 21 3/4 x H 36 7/8 inches



William Yeoward
Accessories
Mirrors
Shelves & Etagères
Desks & Secretaries
Nightstands & Chests
Beds
Cabinets
Bars
Sideboards & Buffets
Tables

Seating

151

150

SEATING

Country style walnut ladderback carver armchair & side chair with shaped back rail and five graduated ladder slats with triangular shaping to centre. Turned legs and stretchers beneath.

TRADITIONAL TRIANGULAR LADDERBACK CHAIR

Heritage Portfolio

Main Finish: Medium Walnut

Main Skill: Hand-Woven/Rattan Inlay

SIDE CHAIR

492300-SC-WAL

ARMCHAIR

492300-AC-WAL

Dimension: W 19 5/8 x D 20 1/2 x H 39 inches

Dimension: W 23 1/4 x D 20 5/8 x H 39 inches



Related Products



493594-158L-MAH



492973-WAL



William Yeoward
Accessories
Mirrors
Shelves & Etagères
Desks & Secretaries
Nightstands & Chests
Beds
Cabinets
Bars
Sideboards & Buffets
Tables

Seating

153

152

SEATING

Inspired by the forms of ancient China, this chair is sculpted of hardwood with a high sheen, lacquer finish and upholstered in a Jonathan Charles performance fabric.

FUSION ROUNDED BLACK GLOSS DINING CHAIR

Modern Portfolio

Main Finish: Langkawi Black Gloss

Main Skill: Lacquer



SIDE CHAIR
500250-SC-LBG-F048 (A)

ARMCHAIR
500250-AC1-LBG-F048 (B)

ARMCHAIR
500250-AC2-LBG-F048 (C)

Dimension: W 21 ¼ x D 21 ¾ x H 41 ¼ inches

Dimension: W 24 ½ x D 21 ¾ x H41 ¼ inches

Dimension: W 28 ¼ x D 24 ½ x H 37 ¾ inches



A



C

Related Products



500347-87L-BAE



500226-BAE-ENO



B

SEATING

Heavily distressed dark oak country armchair & side chair with a batoned back, shaped supports and a curved plank seat with exposed butterfly joints. The legs with tapering hexagonal cross-section.

RUSTIC DARK OAK COUNTRY CHAIR WITH A PLANK SEAT

Heritage Portfolio

Main Finish: Dark Brown Tudor Oak

Main Skill: Wood Carving/Turning



SIDE CHAIR
493402-SC-TDO

Dimension: W 25 x D 25 ¼ x H 41 ¾ inches

ARMCHAIR
493402-AC-TDO

Dimension: W 25 ½ x D 25 ¾ x H 41 ¾ inches



Related Products



493372-48D-TDO



493146-TDO

Dark oak smokers style counter stool with a shaped solid plank back supported on spindle uprights, two of which join the stretcher beneath for strength. High arms around an upholstered seat in dark antique chestnut leather, the back legs rising to form the arm supports. Based on a design of c. 1860.

SMOKERS STYLE DARK OAK COUNTER STOOL

495887-CS-TDO | Heritage Portfolio

Dimension: W 24 ¼ x D 22 ¼ x H 34 ½ inches

Main Finish: Dark Brown Tudor Oak

Main Skill: Leather Upholstery



SMOKERS STYLE DARK OAK BAR STOOL

495887-BS-TDO



Unusually shaped distressed dark oak country style barstool with a tapering back support above sweeping arms that extend from one of the slats. Studded leather seat above swollen legs and stretchers.

DARK OAK BAR STOOL WITH A STUDED DARK ANTIQUE LEATHER SEAT

Heritage Portfolio

Main Finish: Dark Brown Tudor Oak

Main Skill: Wood Carving/Turning

SIDE CHAIR
494315-SC-TDO

Dimension: W 21 ¾ x D 21 ¾ x H 42 ½ inches

ARMCHAIR
494315-AC-TDO

Dimension: W 22 ¾ x D 21 ¾ x H 42 ½ inches



SEATING

George I style walnut and crossbanded veneer armchair with a double lobed shaped curved back panel with fine arabesque inlays, sweeping arms around an antique brown leather seat. Shallow carved details to the seat rail and knee of the tapering cabriole leg.

SEAWEED MARQUETRY CHAIR

Heritage Portfolio

Main Finish: Medium Walnut

Main Skill: Veneer Marquetry



SIDE CHAIR
492802-SC-WAL-L002

Dimension: W 23 ¼ x D 22 7/8 x H 38 ½ inches

ARMCHAIR
492802-AC-WAL-L002

Dimension: W 24 ½ x D 22 7/8 x H 38 ½ inches



Biedermeier style dining armchair & side chair with upholstered seat and back in F200 with the rear panel with flame walnut veneer.

BIEDERMEIER STYLE WALNUT DINING CHAIR

Heritage Portfolio

Main Finish: Medium Crotch Walnut

Main Skill: Antique Wood Finishes

SIDE CHAIR
494808-SC-CWM-F200

Dimension: W 21 ¾ x D 23 ½ x H 37 ½ inches

ARMCHAIR
494808-AC-CWM-F200

Dimension: W 24 ¾ x D 23 ½ x H 37 ½ inches



Related Products



494642-96D-MAH



494646-CWM



SEATING

Modern dining armchair & side chair in a smoked grey eucalyptus finish with a fully upholstered front and back.

SMOKED GREY EUCALYPTUS DINING CHAIR

Modern Portfolio

Main Finish: Dark Smoked Grey Eucalyptus

Main Skill: Wood Carving/Turning



SIDE CHAIR

500019-SC-EDG-F001

ARMCHAIR

500019-AC-EDG-F001

Dimension: W 21 7/8 x D 21 5/8 x H 37 3/4 inches

Dimension: W 21 7/8 x D 23 1/4 x H 36 7/8 inches



Greek revival Biedermeier style walnut occasional chair with full upholstery and Greek key pattern arm details. Inspired by designs of the early 19th century. Frame is covered in a Jonathan Charles performance fabric MAZO (F001).

BIEDERMEIER GREEK KEY WALNUT OCCASIONAL CHAIR

495848-WAL-F001 | Heritage Portfolio

Dimension: W 29 5/8 x D 32 3/4 x H 43 1/4 inches

Main Finish: Medium Walnut

Main Skill: Wood Carving/Turning



Greek revival Biedermeier style black painted wing or armchair & side chair with full upholstery and Greek key pattern arm details. Inspired by designs of the early 19th century.

GREEK KEY DESIGN BIEDERMEIER BLACK CHAIR

Heritage Portfolio

Main Finish: Painted Formal Black

Main Skill: Wood Carving/Turning

SIDE CHAIR

495047-SC-BLA-F001

ARMCHAIR

495047-AC-BLA-F001

Dimension: W 26 5/8 x D 27 3/8 x H 45 5/8 inches

Dimension: W 26 5/8 x D 27 3/8 x H 45 5/8 inches



William Yeoward

Accessories

Mirrors

Shelves & Etagères

Desks & Secretaries

Nightstands & Chests

Beds

Cabinets

Bars

Sideboards & Buffets

Seating

Tables

161

SEATING

A contemporary relaxed occasional tub chair inspired by asian fusion design, in a high gloss, smoky black lacquered finish, upholstered seat & back pillow.

SMOKY BLACK TUB CHAIR WITH BACK PILLOW

500118-BLG-F001 | Modern Portfolio

Dimension: W 28 7/8 x D 26 3/4 x H 27 1/2 inches

Main Finish: Smoky Black

Main Skill: Lacquer



Elegantly carved 2 seater sofa, upholstered in Skipper fabric in a Louis XV French style, with shallow ribbon carved borders.

GOLD LEAF TWO-SEATER SOFA

495426-GIL-F200 | Heritage Portfolio

Dimension: W 63 1/2 x D 31 7/8 x H 40 inches

Main Finish: Light Antique Gold-leaf

Main Skill: Gilding



Finely carved and gilded armchair after early 19th century French Empire designs with sweeping low arms terminating in stylised swans. Ebonised finish highlighted with palmette and lotus leaf detail. Fully upholstered back and seat.

KENSINGTON SWAN ARMCHAIR

494983-BLA-F001 | Heritage Portfolio

Dimension: W 26 1/4 x D 26 3/8 x H 40 3/8 inches

Main Finish: Painted Formal Black

Main Skill: Gilding



Impressive walnut and gilt Empire style armchair & side chair with finely carved golden wing detail to the scrolling uprights and further carved gilt detail to the legs and seat rails. An antique caviar black leather upholstered back and seat. After French designs of the early 19th century.

EMPIRE ANGEL WING CHAIR

Modern Portfolio

Main Finish: Medium Walnut

Main Skill: Wood Carving/Turning



SIDE CHAIR

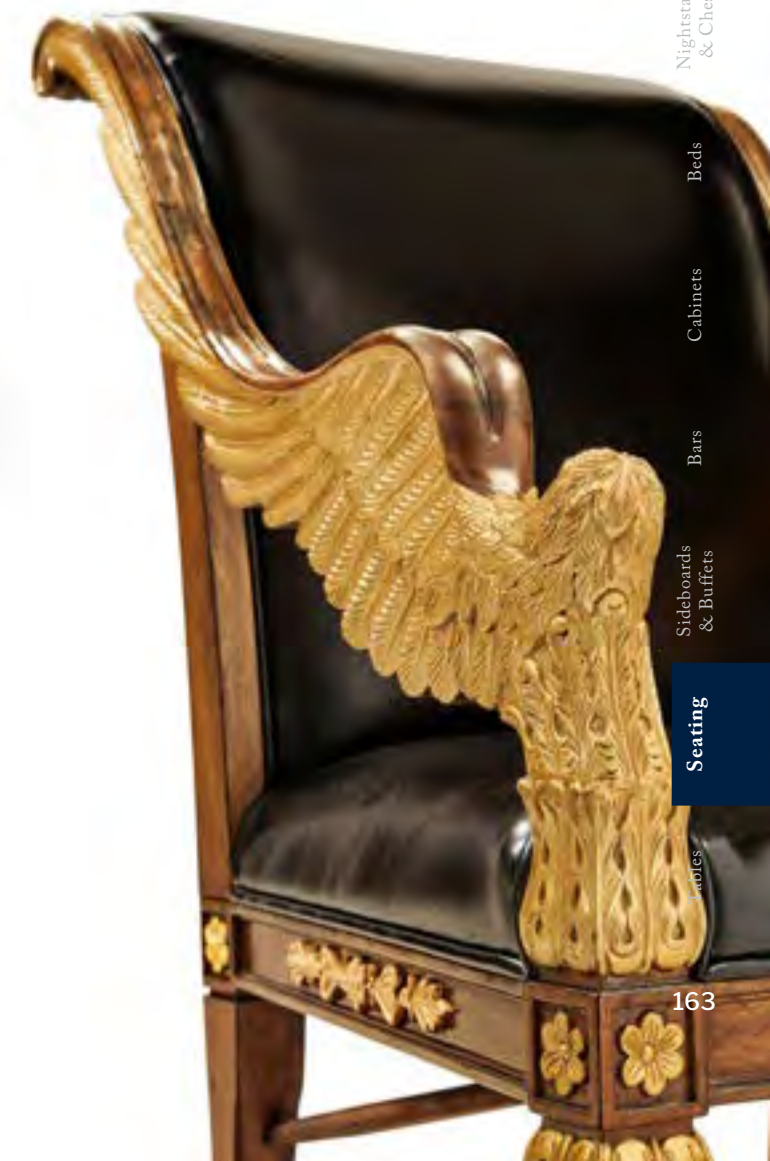
494590-SC-WAL-L009

Dimension: W 24 3/8 x D 27 7/8 x H 37 1/2 inches

ARMCHAIR

494590-AC-WAL-L009

Dimension: W 82 3/4 x D 91 3/4 x H 92 1/2 inches



William Yeoward
Accessories
Mirrors
Shelves & Etageres
Desks & Secretaries
Nightstands & Chests
Beds
Cabinets
Bars
Sideboards & Buffets
Seating

SEATING

Unusual walnut armchair & side chair based on an 18th century shape the serpentine rail above a medium English library green leather back panel in the shape of a "Diamond, Spade, Heart, Club" sweeping arms above reeded straight front legs and raked rear legs. Ideal for poker and bridge.

PLAYING CARD

Heritage Portfolio

Main Finish: Medium Walnut

Main Skill: Leather Upholstery



A



C



D



B

SIDE CHAIR

HEART:

493359-SC-WAL-L007
493359-SC-MBL-L041

DIAMOND:

493362-SC-WAL-L007
493362-SC-MBL-L041 (B)

CLUB:

493360-SC-WAL-L007
493360-SC-MBL-L041 (D)

SPADE:

493361-SC-WAL-L007
493361-SC-MBL-L041

Dimension: W 23 x D 24 1/8 x H 42 inches

ARMCHAIR

HEART:

493359-AC-WAL-L007 (A)

DIAMOND:

493362-AC-WAL-L007

CLUB:

493360-AC-WAL-L007

SPADE:

493361-AC-WAL-L007 (C)

Dimension: W 25 1/8 x D 24 1/8 x H 42 inches



MAHOGANY ROUND POKER TABLE

493366-MAH | Heritage Portfolio

Dimension: W 52 x D 52 x H 31 1/2 inches

Main Finish: Medium Antique Mahogany

Main Skill: Leather Inlay

William Yeoward
Accessories
Mirrors
Shelves & Etagères
Desks & Secretaries
Nightstands & Chests
Beds
Cabinets
Bars
Sideboards & Buffets
Tables

Seating

165

SEATING



Dark oak high backed side chair & armchair with leather upholstery, the curved top rail with a pierced handle beneath. The whole raised on baluster turned front legs and gently curved rear legs with square cross section.

TRADITIONAL HIGH BACK CHAIR

Heritage Portfolio

Main Finish: Dark Brown Tudor Oak

Main Skill: Leather Upholstery



SIDE CHAIR

493381-SC-TDO

Dimension: W 21 1/8 x D 22 1/2 x H 45 3/8 inches

ARMCHAIR

493381-AC-TDO

Dimension: W 26 3/4 x D 23 1/2 x H 45 1/4 inches



Related Products



493372-48D-TDO

Walnut high backed armchair & side chair with medium antique chestnut leather upholstery and a "Diamond, Spade, Heart, Club" shaped handle underneath the curved rail. Heavily carved scrolling arms above baluster turned front legs and an H-shaped stretcher, the whole chair raised on castors. Ideal for poker and bridge.

HIGH BACK PLAYING CARD

Heritage Portfolio

Main Finish: Medium Walnut

Main Skill: Leather Upholstery



A



B

SIDE CHAIR

HEART:
493383-SC-WAL-L002 (B)

DIAMOND:
493385-SC-WAL-L002

CLUB:
493387-SC-WAL-L002

SPADE:
493389-SC-WAL-L002 (C)

Dimension: W 21 1/4 x D 23 3/8 x H 45 1/8 inches

ARMCHAIR

HEART:
493383-AC-WAL-L002

DIAMOND:
493385-AC-WAL-L002 (D)

CLUB:
493387-AC-WAL-L002 (A)

SPADE:
493389-AC-WAL-L002

Dimension: W 26 3/4 x D 24 3/8 x H 45 1/8 inches



C



D

SEATING

Chesterfield style buttoned and studded upholstered office chair with low back and walnut frame. Fully adjustable and set on five legs with castors and finely hand carved details. Frame is covered in a Jonathan Charles performance rich red leather (L016).

CHESTERFIELD STYLE MAHOGANY OFFICE CHAIR

494395-MAH-L016 | Heritage Portfolio

Dimension: W 27 ¼ x D 27 ¾ x H 37 ½ inches

Main Finish: Medium Antique Mahogany

Main Skill: Leather Upholstery



Chesterfield style buttoned and studded upholstered office chair with high back and mahogany frame. Fully adjustable and set on five legs with castors and finely hand carved details. Frame is covered in a Jonathan Charles performance rich red leather (L016)

CHESTERFIELD STYLE HIGH BACK DESK CHAIR

494396-MAH-L016 | Heritage Portfolio

Dimension: W 27 ¼ x D 29 ¼ x H 49 ½ inches

Main Finish: Medium Antique Mahogany

Main Skill: Leather Upholstery





JC ICONIC

SIDEBOARDS
&
BUFFETS

[OPPOSITE]

Buckingham Mahogany Breakfront Sideboard | 492637-MAH

SIDEBOARDS & BUFFETS

Walnut and crotch walnut veneered demilune sideboard with finely cast patinated brass handle and escutcheon, two drawers and large cupboard with adjustable shelf within.

CROTCH WALNUT DEMILUNE SIDEBOARD

493075-CWM | Heritage Portfolio

Dimension: W 54 x D 20 1/8 x H 37 3/4 inches

Main Finish: Medium Crotch Walnut

Main Skill: Veneer Marquetry



SIDEBOARDS & BUFFETS



Elegant crotch mahogany bow fronted commode with three doors and a shelved interior. Fine neoclassical inlays throughout and raised on fluted legs with cast brass details.

SHERATON STYLE BOWFRONT LIGHT MAHOGANY COMMODOE

495039-MAH | Heritage Portfolio

Dimension: W 48 x D 20 1/4 x H 37 3/4 inches

Main Finish: Medium Antique Mahogany

Main Skill: Veneer Marquetry



Also available in Light Walnut:
495039-CWL



Polygonal canted crotch mahogany side cabinet with starburst inlaid top and side doors, the central panel of double doors with concave detail and complementing starburst handle and inlay to the bottom area raised on square cross-section paneled legs.

STARBURST MAHOGANY SIDE CABINET

493190-MAH | Heritage Portfolio

Dimension: W 58 x D 20 x H 38 inches

Main Finish: Medium Antique Mahogany

Main Skill: Veneer Marquetry



SIDEBOARDS & BUFFETS

Regency style crotch mahogany veneered sideboard the breakfront with concave doors to either end, and with three drawers to the center. Patinated brass oval handles, fine marquetry detail to the paneled tapered legs and set on brass feet with square cross section.

BUCKINGHAM BLEACHED MAHOGANY BREAKFRONT SIDEBOARD

492637-MBL | Heritage Portfolio

Dimension: W 67 5/8 x D 22 1/8 x H 38 1/8 inches

Main Finish: Bleached Mahogany

Main Skill: Veneer Marquetry



Long narrow planked walnut double cabinet with light distress, having four drawers above a pair of twin doors and a shelf within, engaged turned columns to the sides raised on turned baluster legs. After a Victorian design of c.1870.

TRADITIONAL DOUBLE NARROW CABINET WITH TWIN CUPBOARDS

492973-WAL | Heritage Portfolio

Dimension: W 58 1/4 x D 13 1/8 x H 37 1/2 inches

Main Finish: Medium Walnut

Main Skill: Wood Carving/Turning



William Yeoward
Accessories
Mirrors
Shelves & Etagères
Desks & Secretaries
Nightstands & Chests
Beds
Cabinets
Bars
Sideboards & Buffets
Seating
Tables

SIDEBOARDS & BUFFETS



Crotch mahogany and crossbanded serpentine double fronted side cabinet with canted corners of fluted columns with chip carving. Two shaped doors with drawers both side and above, patinated brass handles and escutcheons, all raised on bracketed block feet.

MAHOGANY DOUBLE SERPENTINE SIDEBOARD

493134-MAH | Heritage Portfolio

Dimension: W 84 x D 21 3/4 x H 38 inches

Main Finish: Medium Antique Mahogany

Main Skill: Veneer Marquetry



Substantial Regency style flat fronted rectangular sideboard with four doors, flame mahogany veneers, and four drawers to the upper register. Contrasting stringing throughout and raised on square cross-section feet.

BUCKINGHAM REGENCY MAHOGANY SIDEBOARD

494842-MAH | Heritage Portfolio

Dimension: W 58 x D 18 1/2 x H 38 1/2 inches

Main Finish: Medium Antique Mahogany

Main Skill: Veneer Marquetry

Crotch mahogany veneered and crossbanded sideboard with shallow curved doors to either end and an arrangement of five drawers with patinated brass handles, the whole raised on fluted tapered legs.

MAHOGANY SIDEBOARD WITH SHALLOW CURVED DOORS

493184-MAH | Heritage Portfolio

Dimension: W 59 3/4 x D 18 x H 38 inches

Main Finish: Medium Antique Mahogany

Main Skill: Veneer Marquetry





JC ICONIC

BARS

[OPPOSITE]

Complete Linenfold Dark Oak Home Bar | 494564-SET-TDO
Smokers Style Dark Oak Bar Stool | 495887-BS-TDO

BARS



Substantial tudor oak elizabethan style hand carved linenfold home bar with heavy distress. Geometric panelling to centre flanked by finely carved linenfold curved side panels and corbels. Brass footrail to front and countersunk bar area with granite surfaces. Fully fitted interior with wine racking and further granite mixing worktop. Upper section on columns supports with glass storage and a rear mirrored wall with further bottle storage. A hinged access door panel to the side. Range sensitive lighting with touch controlled dimmer. Constructed out of four components, which are also sold individually.

COMPLETE LINENFOLD DARK OAK HOME BAR
494564-SET-TDO | Heritage Portfolio

Dimension: W 106 1/2 x D 96 1/8 x H 106 inches
Main Finish: Dark Brown Tudor Oak
Main Skill: Wood Carving/Turning



* The marble top is not included.



Related Products



495887-BS-TDO



493177-TDO



493116

BARS

Substantial grey oak elizabethan style hand carved linenfold home bar with heavy distress. Geometric panelling to centre flanked by finely carved linenfold curved side panels and corbels. Brass footrail to front and countersunk bar area with granite surfaces. Fully fitted interior with wine racking and further granite mixing worktop. Upper section on columns supports with glass storage and a rear mirrored wall with further bottle storage. A hinged access door panel to the side. Range sensitive lighting with touch controlled dimmer. Constructed out of four components, which are also sold individually.

COMPLETE LINENFOLD GREY OAK HOME BAR

494564-SET-GYO | Heritage Portfolio

Dimension: W 106 1/2 x D 96 1/8 x H 106 inches

Main Finish: Greyed Oak

Main Skill: Wood Carving/Turning

* The marble top is not included.



Related Products



495887-BS-GYO



530029-GYO



530247-GYO



Bars

Sideboards & Buffets

Seating

Tables

Cabinets

Beds

Nightstands & Chests

Dress & Secretaries

Shelves & Etagères

Mirrors

Accessories

William Yeoward



JC ICONIC

CABINETS

[OPPOSITE]

*Traditional Four Door Breakfront Display Cabinet | 495144-BLA
Small Gilded Sunburst Mirror | 494468-GIL*

CABINETS



Functional and visually striking, the Sprite display cabinet features hardwood solids finished in formal black. Behind the alluring double glass doors with metal patterned accents are dyed Koto veneers. With adjustable shelving, this piece is perfect for displaying glassware, crystal or curated objects. Traditional style brass pulls custom cast in Jonathan Charles? Foundry double up on three full length drawers while a set of single drawers offer additional storage for napkin rings and serving utensils.

SPRITE DISPLAY CABINET

493072-BLA | Heritage Portfolio

Dimension: W 47 ¼ x D 18 ½ x H 85 ¾ inches

Main Finish: Painted Formal Black

Main Skill: Lacquer



Black painted four door breakfront display cabinet with grey painted interior and LED Interior lighting, the glazed doors flanked. Three shallow drawers to the top with brass handles.

TRADITIONAL FOUR DOOR BREAKFRONT DISPLAY CABINET

495144-BLA | Heritage Portfolio

Dimension: W 77 x D 18 x H 50 inches

Main Finish: Painted Formal Black

Main Skill: Lacquer



CABINETS



George II style walnut veneered and crossbanded china display cabinet, the central section with a broken pediment centered with an urn, the whole with glazed full length doors with gothic ogee topped glazing bars, adjustable glass inset shelves, and a pedestal base. Range sensitive lighting with touch controlled dimmer.

TRIPLE BREAKFRONT WALNUT DISPLAY CABINET WITH PEDIMENT

493073-WAL | Heritage Portfolio

Dimension: W 85 ¾ x D 19 ½ x H 94 ½ inches

Main Finish: Medium Walnut

Main Skill: Veneer Marquetry



MAHOGANY GLAZED DISPLAY CABINET WITH DRAWERS

493072-MAH | Heritage Portfolio

Dimension: W 48 ½ x D 19 ½ x H 94 ½ inches

Main Finish: Medium Antique Mahogany

Main Skill: Veneer Marquetry



George II style walnut veneered and crossbanded china display cabinet, the top section with a broken pediment centered with an urn, glazed doors with gothic ogee topped glazing bars, three glass inset shelves, and two short and three graduated drawers to the base. Range sensitive lighting with touch controlled dimmer.

WALNUT GLAZED DISPLAY CABINET WITH DRAWERS

493072-CWM | Heritage Portfolio

Dimension: W 48 ½ x D 19 ½ x H 94 ½ inches

Main Finish: Medium Crotch Walnut

Main Skill: Veneer Marquetry



CABINETS



Breakfront display cabinet with adjustable glass shelves within, the satinwood veneers having contrasting fine marquetry work to the frieze and cupboard fronts. Individually applied glazing bars with an Églomisé and gilt swagged cartouche to the centre. Range sensitive lighting with touch controlled dimmer. The whole raised on gilded column legs.

SATINWOOD DISPLAY CABINET

492437-SAM-GES | Heritage Portfolio

Dimension: W 58 ½ x D 20 ¾ x H 74 ¾ inches

Main Finish: Medium Satinwood

Main Skill: Veneer Marquetry



Narrow display cabinet with adjustable glass shelves within, the satinwood veneers having contrasting fine marquetry work to the frieze and cupboard front. Individually applied glazing bars with an Églomisé and gilt swagged cartouche to the centre. Range sensitive lighting with touch controlled dimmer. The whole raised on gilded column legs.

NARROW SATINWOOD DISPLAY CABINET

493585 -SAM | Heritage Portfolio

Dimension: W 31 ¾ x D 21 ¼ x H 90 inches

Main Finish: Medium Satinwood

Main Skill: Veneer Marquetry



CABINETS

Large double fronted crotch walnut and crossbanded china cabinet, the serpentine architrave followed by the curve of the glass below in the four doors. Adjustable glass inset shelving within. Range sensitive lighting with touch controlled dimmer. Cupboard and ten drawers to the base set on bracketed block feet.

SERPENTINE ARCHITRAVE WALNUT CHINA CABINET

493126-CWM | Heritage Portfolio

Dimension: W 85 7/8 x D 22 1/8 x H 93 inches

Main Finish: Medium Crotch Walnut

Main Skill: Veneer Marquetry



CABINETS



TRIPLE WALNUT DISPLAY CABINET WITH DRAWERS
493156-CWM | Heritage Portfolio

Dimension: W 85 ¾ x D 19 ¾ x H 94 ½ inches
Main Finish: Medium Crotch Walnut
Main Skill: Veneer Marquetry



George II style walnut veneered and crossbanded china display cabinet, the central section with a broken pediment centered with an urn, the whole with glazed doors with gothic ogee topped glazing bars, adjustable glass inset shelves, and four short and three graduated drawers to the base as well as two cupboards. Range sensitive lighting with touch controlled dimmer.

TRIPLE MAHOGANY DISPLAY CABINET WITH DRAWERS
493156-MAH | Heritage Portfolio

Dimension: W 85 ¾ x D 19 ¾ x H 94 ½ inches
Main Finish: Medium Antique Mahogany
Main Skill: Veneer Marquetry



Finely detailed mahogany china cabinet in the manner of William Kent, featuring a broken pediment highlighted with egg-and-dart and Greek key ornaments. The shallow carved swags on the glazing panels, along with the adjustable glass shelves and well-arranged compartments within, provide both elegance and versatility.

NEO-CLASSICAL MAHOGANY CHINA CABINET
492250-MAH | Heritage Portfolio

Dimension: W 48 x D 18 ¾ x H 91 ¾ inches
Main Finish: Medium Antique Mahogany
Main Skill: Veneer Marquetry

William Yeoward
Accessories
Mirrors
Shelves & Etagères
Desks & Secretaries
Nightstands & Chests
Beds
Cabinets
Bars
Sideboards & Buffets
Seating
Tables

CABINETS

Black lacquered drinks cabinet on stand, lined with silver leaf, Églomisé glass and a single drink mixing shelf as well as glass storage, the doors with fine hand painted gilt floral details, and with further gilt painted details throughout. Finely cast floral brass door escutcheons.

FORMAL BLACK & GOLD DRINKS CABINET

492356-FBG | Heritage Portfolio

Dimension: W 43 x D 22 ½ x H 67 ¾ inches

Main Finish: Painted Formal Black & Gold

Main Skill: Hand Painting



Black drinks cabinet with stunning hand painted still life on the door panels. Inside is lined in églomisé.

BLACK PAINTED DRINKS CABINET

492249-FBG | Heritage Portfolio

Dimension: W 43 x D 22 ½ x H 67 ¾ inches

Main Finish: Painted Formal Black & Gold

Main Skill: Hand Painting



CABINETS

Decorative red painted and hand-finished two door cocktail cabinet based on Chinese lacquered chests of the 18th century, raised on an Irish style carved and gilded walnut base. The interior lined with Églomisé glass and glass storage as well as drawers and a mixing slide.

RED CHINOISERIE DRINKS CABINET
492259-RFW | Heritage Portfolio

Dimension: W 40 x D 24 1/8 x H 68 inches
Main Finish: Painted Red Floral
Main Skill: Hand painting



BLACK CHINOISERIE DRINKS CABINET
492259-BFW | Heritage Portfolio

Dimension: W 40 x D 24 1/8 x H 68 inches
Main Finish: Medium Painted Black Floral & Walnut
Main Skill: Hand painting



Handpainted Birds on Rich Walnut and Light Gold Foil Drinks Cabinet

HANDPAINTED ON LIGHT GOLD FOIL DRINKS CABINET
495893-WRC-LGF | Heritage Portfolio

Dimension: W 25 x D 20 x H 72 1/8 inches
Main Finish: Rich Walnut
Main Skill: Hand Painting



CABINETS



Elizabethan style dark oak linenfold TV cabinet with hinged fold-away doors, and an in-built infrared repeater system hidden behind the drawers. Open base beneath with two drawers with futher linenfold carving above barleytwist legs and stretcher. Patinated brass strap hinges and handles.

ELIZABETHAN STYLE DARK OAK TV CABINET

493146-TDO | Heritage Portfolio

Dimension: W 72 x D 20 x H 86 inches

Main Finish: Dark Brown Tudor Oak

Main Skill: Wood Carving/Turning



Crotch mahogany and crossbanded serpentine fronted side cabinet with canted corners of fluted columns with chip carving. Two shaped doors with drawers above, patinated brass handles and escutcheons, all raised on bracketed block feet.

SERPENTINE TWO DOOR MAHOGANY CABINET

493132-MAH | Heritage Portfolio

Dimension: W 43 3/8 x D 21 1/4 x H 38 inches

Main Finish: Medium Antique Mahogany

Main Skill: Veneer Marquetry



SERPENTINE TWO DOOR WALNUT CABINET

493132-CWM | Heritage Portfolio

Dimension: W 43 3/8 x D 21 1/4 x H 38 inches

Main Finish: Medium Crotch Walnut

Main Skill: Veneer Marquetry



Elizabethan style dark oak linenfold TV cabinet with hinged fold-away doors, and an in-built infrared repeater system hidden behind the drawers. storage area beneath by means of two further drawers and panelled doors. Patinated brass strap hinges and handles.

LINENFOLD DARK OAK TV CABINET

493177-TDO | Heritage Portfolio

Dimension: W 56 1/4 x D 20 x H 83 1/2 inches

Main Finish: Dark Brown Tudor Oak

Main Skill: Wood Carving/Turning



SMALL SATINWOOD & CREAM SCAGLIOLA ITALIAN COMMODO

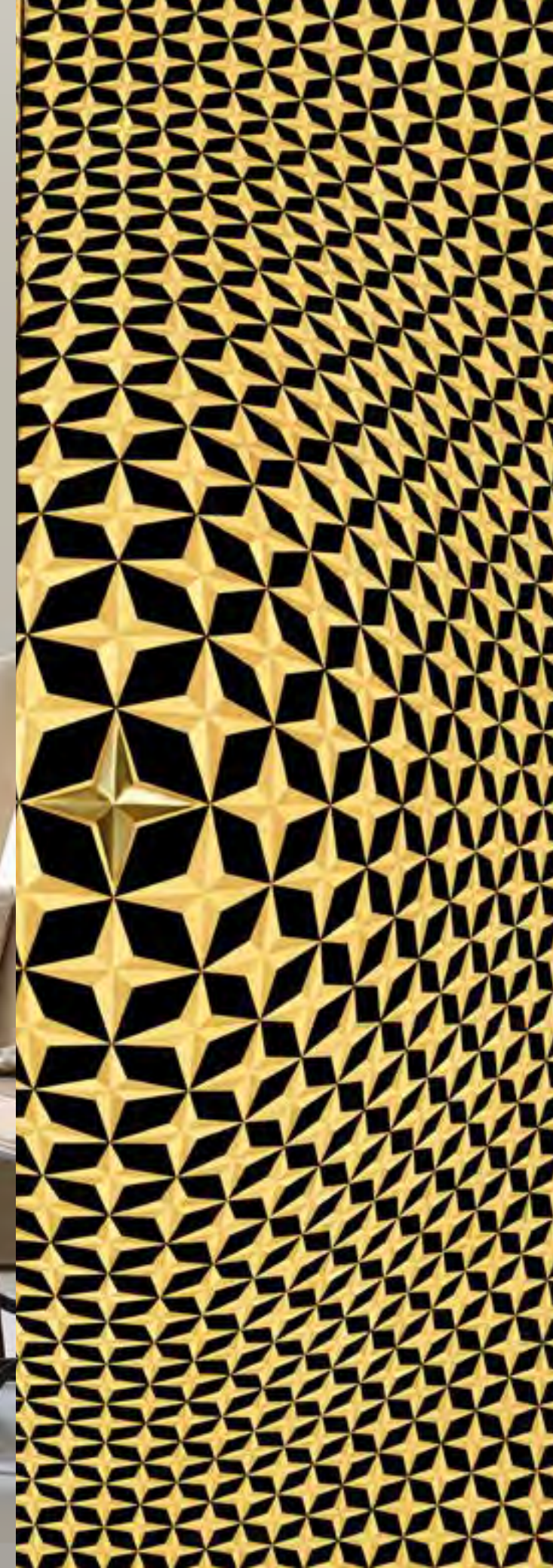
494178-SAM-SG01 | Heritage Portfolio

Dimension: W 26 x D 16 x H 32 inches

Main Finish: Medium Satinwood

Main Skill: Veneer Marquetry





Bringing the Old World technique of marquetry into a modern design, this 3D geometric cabinet was hand crafted with over 10,000 pieces of veneer inlay to present an optical illusion that the front doors protrude beyond their surface. Additionally, the polished brass hardware matches the unique shape of the four-point star design and is used to open the door, as well as being the knobs for the six inside drawers.

FOUR-POINT STAR 3D GEOMETRIC CABINET

500020-WDG | Modern Portfolio

Dimension: W 42 x D 19 1/2 x H 80 inches

Main Finish: Dark Golden Walnut

Main Skill: Veneer Marquetry



Scan to watch this product come to life.



Walnut and burl walnut TV cabinet on openwork stand, twin hinged doors to the top section with finely inlaid contrasting panels of swirling arabesques, and a space for a TV within, above three drawers with further inlay an an infrared repeater system within. Brass hardware to the doors and drawers cast using the “lost wax” technique.

BURL WALNUT & SEAWEED TV CABINET

493149-BWM | Heritage Portfolio

Dimension: W 69 1/8 x D 21 1/8 x H 86 inches

Main Finish: Medium Burr Walnut

Main Skill: Veneer Marquetry



CABINETS



Walnut and burl walnut humidor or collectors cabinet on stand with finely inlaid panels of contrasting marquetry and cast brass escutcheons. Fully lined with an arrangement of glass fronted drawers for ease of identification, and raised on an open base with oval lower shelf.

WALNUT & SEAWEED COLLECTORS CABINET

493584-BWM | Heritage Portfolio

Dimension: W 29 3/4 x D 14 x H 55 inches
Main Finish: Medium Burr Walnut
Main Skill: Inlay Technique



WILLIAM & MARY WALNUT & OYSTER DRINKS CABINET

492582-WAL | Heritage Portfolio

Dimension: W 46 1/2 x D 20 7/8 x H 69 3/8 inches
Main Finish: Medium Walnut
Main Skill: Hand Casting



William and Mary walnut secretaire cabinet with fine oyster veneers to the panelled doors, multiple small drawers to the exterior and fully fitted interior with, Églomisé lined alcove and shelves, drawers and pigeonholes. The whole raised on an open base with barley twist legs and serpentine stretchers.

WILLIAM & MARY WALNUT & OYSTER SECRETARY CABINET

492033-WAL | Heritage Portfolio

Dimension: W 46 3/4 x D 20 7/8 x H 69 3/8 inches
Main Finish: Medium Walnut
Main Skill: Hand Casting

William Yeoward
 Accessories
 Mirrors
 Shelves & Etagères
 Desks & Secretaries
 Nightstands & Chests
 Beds
 Cabinets
 Bars
 Sideboards & Buffets
 Seating
 Tables

CABINETS



DARK GOLD WALNUT & HAND PAINTED TV CABINET

500142-WDG | Modern Portfolio

Dimension: W 90 ½ x D 21 ¾ x H 28 ¾ inches

Main Finish: Dark Golden Walnut

Main Skill: Hand Painting



Experience the epitome of modern Asian elegance with our lacquered and hand painted entertainment cabinet. Melding sleek contemporary design with traditional craftsmanship, this entertainment console's highlight is the captivating hand-painted and gold leaf scene on its doors. Complemented by a black gloss finish and accents of antique golden luxury, it's a true masterpiece that transforms any space, effortlessly blending tradition with modernity. It takes our artists year to get to this level of quality and to paint just one of these takes over 120 hours. This item sells all over the world and retails in famous shops like Harrods in London... who wouldn't want to watch TV if it is sitting on this masterpiece...?

MODERN ASIAN SMOKY BLACK & GOLD ENTERTAINMENT CABINET

500171-AGF-BLG | Modern Portfolio

Dimension: W 90 ½ x D 21 ¾ x H 28 ½ inches

Main Finish: Antique Gold

Main Skill: Hand Painting





JC ICONIC

BEDS

[OPPOSITE]

Four Poster Mahogany US King Bed | 493801-USK-MAH



Chippendale style four poster bed with the finest mahogany flame veneers and satinwood crossbanding on the head and footboard, high turned and fluted posts on square carved fretwork legs.

FOUR POSTER MAHOGANY US KING BED

493801-USK-MAH | Heritage Portfolio

Dimension: W 82 ¾ x D 91 ¾ x H 92 ½ inches

Main Finish: Medium Walnut

Main Skill: Veneer Marquetry



Related Products



492822-MAH



493090-MAH



492268-MAH



Crotch walnut sleigh bed after the French style, with high sloping headboard and low foot end, carved moulded frame and apron all on kick-out bracket feet.

WALNUT SLEIGH US KING BED
493941-USK-CWM | Heritage Portfolio

Dimension: W 96 1/8 x D 84 3/8 x H 54 1/8 inches
Main Finish: Medium Crotch Walnut
Main Skill: Veneer Marquetry



Related Products



492096-WAL



494646-CWM



492092-GEG-GPM



JC ICONIC

NIGHTSTANDS
&
CHESTS

[OPPOSITE]

Chippendale Style Inlaid Cabinet Chest of Drawers | 495759-SAM
Sheraton Style Walnut & Gilded Oval Back ArmChair | 492951-AC-WAL-GIL-FCOM
Finely Carved & Gilded Rococo Style Mirror | 494372-GIL

NIGHTSTANDS & CHESTS

Magical

reviving historical beauty

THE SIGNATURE COLLECTION, UNIQUE MASTERPIECE

Celebrate the beauty of tradition with the “Chippendale Style Inlaid Cabinet Chest of Drawers”. This spectacular debut is fashioned after an elaborate 1770’s Thomas Chippendale original that auctioned at Sotheby’s London in 2008 for £6,216,750 against the estimate of £2,814,000 to £4,403,000 and exceeded the previous world record for any piece of English furniture. For those who have lost their chance to own this coveted antique, Jonathan Charles has produced 50 limited edition chests.

CHIPPENDALE STYLE INLAID CABINET CHEST OF DRAWERS

495759-SAM | Heritage Portfolio

Dimension: W 55 x D 24 x H 35 ¼ inches

Main Finish: Medium Satinwood

Main Skill: Veneer Marquetry



PRIDE & HONOUR

EXCLUSIVITY - 50 OF A KIND - LIMITED EDITION

The Jonathan Charles “Chippendale Style Inlaid Cabinet Chest of Drawers” belongs to the exquisite “Signature Collection”. No more than 50 masterpieces are created by Jonathan Charles’ craftsmen. Once all 50 pieces are created, they will never be made again. Own the exclusivity of a small exclusive collection. A signature key box and certificate of authenticity are included.



NIGHTSTANDS & CHESTS

LIMITED EDITION 50 OF A KIND



CHIPPENDALE STYLE INLAID CABINET CHEST OF DRAWERS

494374 | Heritage Portfolio

Dimension: W 55 x D 24 x H 35 1/4 inches

Main Finish: Medium Satinwood

Main Skill: Veneer Marquetry



AROMATIC CEDAR WOOD & EXQUISITE DETAIL

HEIRLOOM FURNITURE

The "Chippendale Style Inlaid Cabinet Chest of Drawers" is an exquisite heirloom masterpiece that will be passed from generation to generation. We are proud to be a permanent part of your home.

William Yeoward
Accessories
Mirrors
Shelves & Etagères
Desks & Secretaries
Nightstands & Chests
Beds
Cabinets
Bars
Sideboards & Buffets
Seating
Tables

NIGHTSTANDS & CHESTS



Fine Italian inspired commode or washstand with parquetry inlay to the upper part which hides a secret drawer, and complex renaissance style inlays to the two lower large drawers. Finely cast brass details to the fluted columns and a white scagliola top with contrasting black details.

ITALIAN COMMODO WITH CREAM SCAGLIOLA TOP (LARGE)
494167-SAM-SG01 | Heritage Portfolio

Dimension: W 42 ½ x D 20 ¼ x H 34 inches
Main Finish: Medium Satinwood
Main Skill: Veneer Marquetry



Elegant Biedermeier inspired demilune chest of three drawers veneered in crotch mahogany with contrasting stringing inlay raised on tapering sweeping legs with matching inlays.

BIEDERMEIER STYLE MAHOGANY DEMILUNE CABINET
494004-LAM | Heritage Portfolio

Dimension: W 40 x D 18 x H 35 7/8 inches
Main Finish: Light Antique Mahogany
Main Skill: Veneer Marquetry



French Empire style walnut veneered chest of three drawers with fine geometric and floral inlays raised on tapering square legs with brass sabots.

EMPIRE STYLE WALNUT THREE DRAWER CHEST
494646-CWM | Heritage Portfolio

Dimension: W 48 x D 21 ½ x H 40 inches
Main Finish: Medium Crotch Walnut Marquetry
Main Skill: Veneer Marquetry

NIGHTSTANDS & CHESTS



CHINOISERIE STYLE ANTIQUE ROYAL BLUE CHEST OF DRAWERS

500249-PRB | Modern Portfolio

Dimension: W 47 1/4 x D 19 1/4 x H 34 1/4 inches

Main Finish: Antique Royal Blue & Gold

Main Skill: Hand Painting



Charming and decorative nightstand of drawer gilded chinoiserie style decoration.

CHINOISERIE STYLE EBONISED BEDSIDE CHEST OF DRAWERS

495353-EBF | Heritage Portfolio

Dimension: W 32 1/4 x D 19 5/8 x H 28 3/8 inches

Main Finish: Ebonised

Main Skill: Hand Painting



Charming and decorative bedside gilded chinoiserie style decoration.

CHINOISERIE STYLE BEDSIDE TABLE

495352-EBF | Heritage Portfolio

Dimension: W 24 x D 17 3/4 x H 27 3/4 inches

Main Finish: Ebonised

Main Skill: Hand Painting





Chest of drawers with a brass base and 3D op art design made using different wood veneers, including bright satinwood, and referencing rompe l'oeil effects. It gives the effect that the centre of the drawers are protruding from the front surface.

3D OP ART CHEST OF DRAWERS

500082-SWB | Modern Portfolio

Dimension: W 42 x D 20 x H 36 inches

Main Finish: Bright Satinwood

Main Skill: Veneer Marquetry



Chest of drawers in black eucalyptus with a marble top, polished stainless steel handles, and shallow carved detailing on the base.

BLACK EUCALYPTUS CHEST OF DRAWERS

495561-BEC | Modern Portfolio

Dimension: W 48 x D 19 x H 38 3/8 inches

Main Finish: Paloma

Main Skill: Wood Carving/Turning



NIGHTSTANDS & CHESTS

Pair of Regency style mahogany veneered and crossbanded bedside cabinets with a pierced patinated brass rail, single drawer and cupboard, and raised under-tier. Tapering fluted legs and fine floral marquetry work to the paneled uprights.

PAIR OF MAHOGANY BEDSIDE CABINETS

492822-MAH | Heritage Portfolio

Dimension: W 18 7/8 x D 15 3/4 x H 36 inches
Main Finish: Medium Antique Mahogany
Main Skill: Veneer Marquetry



Mahogany side table or bedside table with mahogany crotch veneer, finely pierced patinated brass rail, a single drawer with phone and MP3 charger within, above a cupboard and shaped under-tier.

MAHOGANY BEDSIDE TABLE WITH BRASS GALLERY

493090-MAH | Heritage Portfolio

Dimension: W 30 x D 18 3/4 x H 35 1/2 inches
Main Finish: Medium Antique Mahogany
Main Skill: Veneer Marquetry



Regency style demilune chest of four graduating drawers ideal as a bedside chest, with radial crotch mahogany veneers to the top and fine marquetry work to the paneled tapering legs. Patinated oval brass handles, the whole raised on tapering block feet.

MAHOGANY DEMILUNE CHEST OF DRAWERS

492659-MAH | Heritage Portfolio

Dimension: W 40 x D 18 x H 35 7/8 inches
Main Finish: Medium Antique Mahogany
Main Skill: Veneer Marquetry

William and Mary style walnut chest of drawers with decorative geometric oyster veneers. Four graduated drawers with curved and canted profile the whole raised on round bun feet.

OYSTER VENEER LARGE CHEST OF DRAWERS

492090-WAL | Heritage Portfolio

Dimension: W 42 1/2 x D 21 x H 35 3/4 inches
Main Finish: Medium Walnut
Main Skill: Veneer Marquetry





JC ICONIC

DESKS & SECRETARIES

[OPPOSITE]

Mahogany Partners Desk | 493198-MAH

Gadrooned Five-Tier Étagère | 494166

Gadrooned Console | 494187-WBI

Tudor Style Medium Antique Chestnut Leather Hall Seat ArmChair | 492166-AC-WAL

Walnut Desk "Post Box" | 494274-WAL

French Style Caned Walnut Waste Basket | 493985-WAL

Victorian Style Crotch Walnut Letter Tray with Drawer | 494265-CWM

Crotch Walnut Desk Organiser | 494279-CWM

DESKS & SECRETARIES



Satinwood desk with ebonised marquetry inlay throughout. The writing surface is inset with tooled leather.

SATINWOOD CARLTON HOUSE DESK
492444-SAM-L001 | Heritage Portfolio

Dimension: W 56 ¾ x D 24 ¾ x H 39 ½ inches
Main Finish: Medium Satinwood
Main Skill: Veneer Marquetry

Elegant satinwood Carlton House type desk, the horseshoe top section with an arrangement of drawers and cupboards and the lower section with three drawers. The whole with fine inlays of running bands of floral motifs.

CARLTON HOUSE DESK
493068-SAM | Heritage Portfolio

Dimension: W 56 ¾ x D 24 ¾ x H 39 ½ inches
Main Finish: Medium Satinwood
Main Skill: Veneer Marquetry



Red emperor desk with an alter table style top and a single drawer inlaid in red eggshell, set above a gold-leaf foil mix with a black gloss lacquer base.

RED EMPEROR DESK
495579-EDR | Modern Portfolio

Dimension: W 62 x D 28 ¾ x H 31 ½ inches
Main Finish: Emperor Dark Red
Main Skill: Eggshell



DESKS & SECRETARIES



Highly detailed rectangular walnut centre or library table in the French renaissance style with lion bracket supports to either end and a central arched columnar arcade. After an original of c.1550.

FRENCH RENAISSANCE STYLE LIBRARY TABLE

494780-MWA | Heritage Portfolio

Dimension: W 57 ½ x D 31 ½ x H 30 ¼ inches

Main Finish: Medium Antique Walnut

Main Skill: Wood Carving/Turning



Imposing and finely carved walnut writing table after an Italian original of c.1800, with inset green leather panels to the surface and three drawers, brass lions head details and shallow carved volute legs terminating in lions paw feet.

ITALIAN LIONS PAW DESK (LEATHER & WALNUT)

492173-WAL | Heritage Portfolio

Dimension: W 64 x D 30 ¼ x H 30 ¾ inches

Main Finish: Medium Walnut

Main Skill: Wood Carving/Turning





Imposing George II style walnut desk with tan leather inset surface, fine carving to the shoulders of the cabriole legs and with a secret pop-up compartment. The desk supported on detailed ball and claw feet.

GEORGE II WALNUT DESK

493062-CWM | Heritage Portfolio

Dimension: W 61 ½ x D 33 ¾ x H 30 inches

Main Finish: Medium Crotch Walnut

Main Skill: Leather Inlay



Stunning desk with hand carved legs, Seaweed Marquetry inlaid drawers, sides and top, an antique leather writing surface, and a pop-up secret compartment.

SEAWEED MARQUETRY DESK

493098-BWM | Heritage Portfolio

Dimension: W 61 x D 32 ¾ x H 30 inches

Main Finish: Medium Burr Walnut

Main Skill: Veneer Marquetry



DESKS & SECRETARIES



Classic Queen Anne style bureau cabinet base with fine pollarded oak veneers, a fully fitted interior with multiple drawers, inset leather panels and architectural details. The lower case with leather lined slant front opening to a fitted interior with multiple drawers, cupboards and pigeonholes, over two aligned drawers. After an original of c.1710.

QUEEN ANNE POLLARD VENEER BUREAU CABINET (BASE)

494556-LRO | Heritage Portfolio

Dimension: W 42 1/8 x D 22 x H 41 1/4 inches

Main Finish: Light Rustic Burr Oak

Main Skill: Veneer Marquetry



Walnut and crotch walnut veneered Queen Anne style fall front bureau with fine marquetry inlays to the drawer fronts and sides. Patinated antique style brass handles and fully fitted interior. The whole raised on block feet.

QUEEN ANNE FALL FRONT WALNUT BUREAU

494558-CWM | Heritage Portfolio

Dimension: W 42 x D 22 x H 41 3/8 inches

Main Finish: Medium Crotch Walnut Marquetry

Main Skill: Veneer Marquetry

William and Mary style fall-front walnut writing bureau with decorative oyster veneers, the whole raised on block feet. Three small drawers above three long drawers and a fully fitted interior with inset leather writing surface. After an original of c.1700.

WILLIAM & MARY WALNUT & OYSTER BUREAU

492220-WAL | Heritage Portfolio

Dimension: W 33 1/2 x D 19 1/2 x H 37 inches

Main Finish: Medium Walnut

Main Skill: Veneer Marquetry





A tour-de-force of cabinetry, a superbly detailed satinwood and exotic wood inlaid writing table with designs of the sciences and putti raised on finely carved tapering gilt legs set on lotus leaf feet. The small drawer opens for storage, but a further lock opens a secret larger drawer with hidden storage and a hinged panel to support a book. Fully lined interior with further inlays, and abundant applied rococo cast brass detail. The original design was made by Beurdeley in early 19th century.

MECHANICAL SCIENCE AND MATHEMATICS TABLE

494535-SAL | Heritage Portfolio

Dimension: W 42 ¾ x D 24 x H 30 inches

Main Finish: Light Satinwood

Main Skill: Veneer Marquetry



Louis XIV style bureau plat in satinwood with contrasting geometric marquetry detailing and finely cast brass mounts and sabots. Inlaid leather writing surface.

SATINWOOD AND MARQUETRY BUREAU PLAT

494640-SAL | Heritage Portfolio

Dimension: W 63 ¾ x D 32 ¼ x H 30 ½ inches

Main Finish: Light Satinwood

Main Skill: Veneer Marquetry

Fine inlaid marquetry and marquetry satinwood dressing/writing table with floral design to the top and geometric patterns to the sides and interior. A lockable sliding top panel reveals a hidden hinged panel to support a book or mirror and a number of hidden drawers. Fine cast brass appliques to the cabriole legs and lions paw sabots. Inspired by an original of the early 18th century designed by Jean Francois Oeben. Probably made for the French royal household. Limited edition of 200 pieces.

LOUIS XV STYLE MECHANICAL WRITING TABLE

494553-SAL | Heritage Portfolio

Dimension: W 32 x D 19 x H 30 inches

Main Finish: Light Satinwood

Main Skill: Veneer Marquetry



DESKS & SECRETARIES



Early Victorian style crotch mahogany partners desk designed for two with an antique green leather writing surface and cable management. The left hand faux drawers open to reveal a computer/printer cupboard and the right hand drawers are for hanging files. After an original of c1850.

MAHOGANY PARTNERS DESK

493198-MAH | Heritage Portfolio

Dimension: W 82 x D 44 x H 30 ½ inches

Main Finish: Medium Antique Mahogany

Main Skill: Veneer Marquetry



CROTCH WALNUT PARTNERS DESK

493198-CWM | Heritage Portfolio

Dimension: W 82 x D 44 x H 30 ½ inches

Main Finish: Medium Crotch Walnut

Main Skill: Veneer Marquetry



Kidney shaped pedestal desk with crotch mahogany veneer or figured walnut veneer, an inset leather writing surface and a remote controlled monitor lift. Three drawers to the left and a single cupboard to the right. Brass drop handles. Suitable for 20-22" monitors, max. weight 30 lbs.

MAHOGANY KIDNEY PEDESTAL DESK

493063-MAH | Heritage Portfolio

Dimension: W 70 ¾ x D 36 ¾ x H 30 ½ inches

Main Finish: Medium Antique Mahogany

Main Skill: Veneer Marquetry



DESKS & SECRETARIES

Impressive inlaid satinwood and parcel-gilt partners desk in the Neo-Classical style, inspired by designs of the late 18th century. Features aromatic cedarwood drawer linings and two removable drawers placeable on the table top. Fine inlays throughout in the rococo taste. Limited edition of 50 pieces only - with key box.

NEO-CLASSICAL PARTNERS DESK

494163-WLL | Heritage Portfolio

Dimension: W 80 x D 44 ¼ x H 39 ¾ inches

Main Finish: Light Walnut

Main Skill: Veneer Marquetry



Walnut faux partners desk with tan inset leather top, cable management and secret drawers. Large cupboard to left and drawers to right with hanging file facility. Fine carved details throughout. After an original of c1860.

WALNUT FAUX PARTNERS DESK

493071-CWM | Heritage Portfolio

Dimension: W 80 x D 41 ¾ x H 30 ½ inches

Main Finish: Medium Crotch Walnut

Main Skill: Wood Carving/Turning



DESKS & SECRETARIES



Queen Anne style walnut and burl walnut veneered writing cabinet on stand with finely cast patinated brass escutcheons and hinges, set on a carved walnut base with shallow carving and ball and claw feet. Fully fitted interior with shelves and drawers throughout.

QUEEN ANNE WALNUT & SATINWOOD WRITING CABINET

492218-SAM | Heritage Portfolio

Dimension: W 42 ¼ x D 27 ¾ x H 68 ⅝ inches

Main Finish: Medium Satinwood

Main Skill: Hand Casting



Striking Art Deco style secretaire cabinet fully veneered in decorative santos rosewood with a fully fitted interior comprising a central cupboard surrounded by 14 drawers, all with grey faux shagreen veneer. Fold-down front above three further large drawers, the whole with stylised stainless steel handles and hinges. High lustre finish.

ART DECO STYLE SECRETAIRE WITH STAINLESS STEEL (HIGH LUSTRE)

494335-SAH-ST5 | Modern Portfolio

Dimension: W 42 ¾ x D 16 ½ x H 55 inches

Main Finish: Santos Rosewood High Lustre

Main Skill: Veneer Marquetry



DESKS & SECRETARIES



Walnut and burl walnut cabinet on chest, twin doors and two drawers to the top section with finely inlaid contrasting panels of swirling arabesque 'seaweed marquetry', fully lined interior with inlaid drawers and a small cupboard as well as a slide, above two short and two long drawers with further inlay. Brass hardware to the doors and drawers cast using the "lost wax" technique.

LIGHT WALNUT & SEAWEED ESCRITTOIRE CABINET

492252-WLL | Heritage Portfolio

Dimension: W 53 7/8 x D 21 3/4 x H 75 3/8 inches

Main Finish: Light Walnut

Main Skill: Veneer Marquetry



Satinwood roll top tambour desk with geometric parquetry veneers, the interior with six drawers and shelving, two deep drawers beneath and a secret drawer to the top section. All crowned with a pierced brass gallery.

SATINWOOD ROLL TOP DESK

492419 | Heritage Portfolio

Dimension: W 44 1/2 x D 22 3/4 x H 47 1/4 inches

Main Finish: Light Walnut

Main Skill: Veneer Marquetry



DESKS & SECRETARIES



Spectacular Queen Anne style bureau cabinet with crotch walnut veneers throughout, the upper section with ogee moulded glazed panels opening to reveal a black and gilt handpainted Chinoiserie style interior with multiple drawers and cupboards. Fall front bureau base with fine inlays to drawer fronts set on a block footed base.

QUEEN ANNE WALNUT BUREAU WITH CHINOISERIE INTERIOR & MIRRORED DOORS

494482-CWM | Heritage Portfolio

Dimension: W 44 x D 22 x H 98 3/8 inches

Main Finish: Medium Crotch Walnut Marquetry

Main Skill: Veneer Marquetry



QUEEN ANNE WALNUT BUREAU WITH CHINOISERIE INTERIOR & PANELLED DOORS

494557-CWM | Heritage Portfolio

Dimension: W 44 x D 22 x H 98 3/8 inches

Main Finish: Medium Crotch Walnut Marquetry

Main Skill: Veneer Marquetry



DESKS & SECRETARIES



Classic Queen Anne style bureau cabinet with fine pollarded oak veneers, the upper section with double domed top surmounted with carved and turned finials, and antiqued mirrored doors revealing a fully fitted interior with multiple drawers, inset leather panels and architectural details. The lower case with leather lined slant front opening to a fitted interior with multiple drawers, cupboards and pigeonholes, over two aligned drawers. After an original of c.1710.

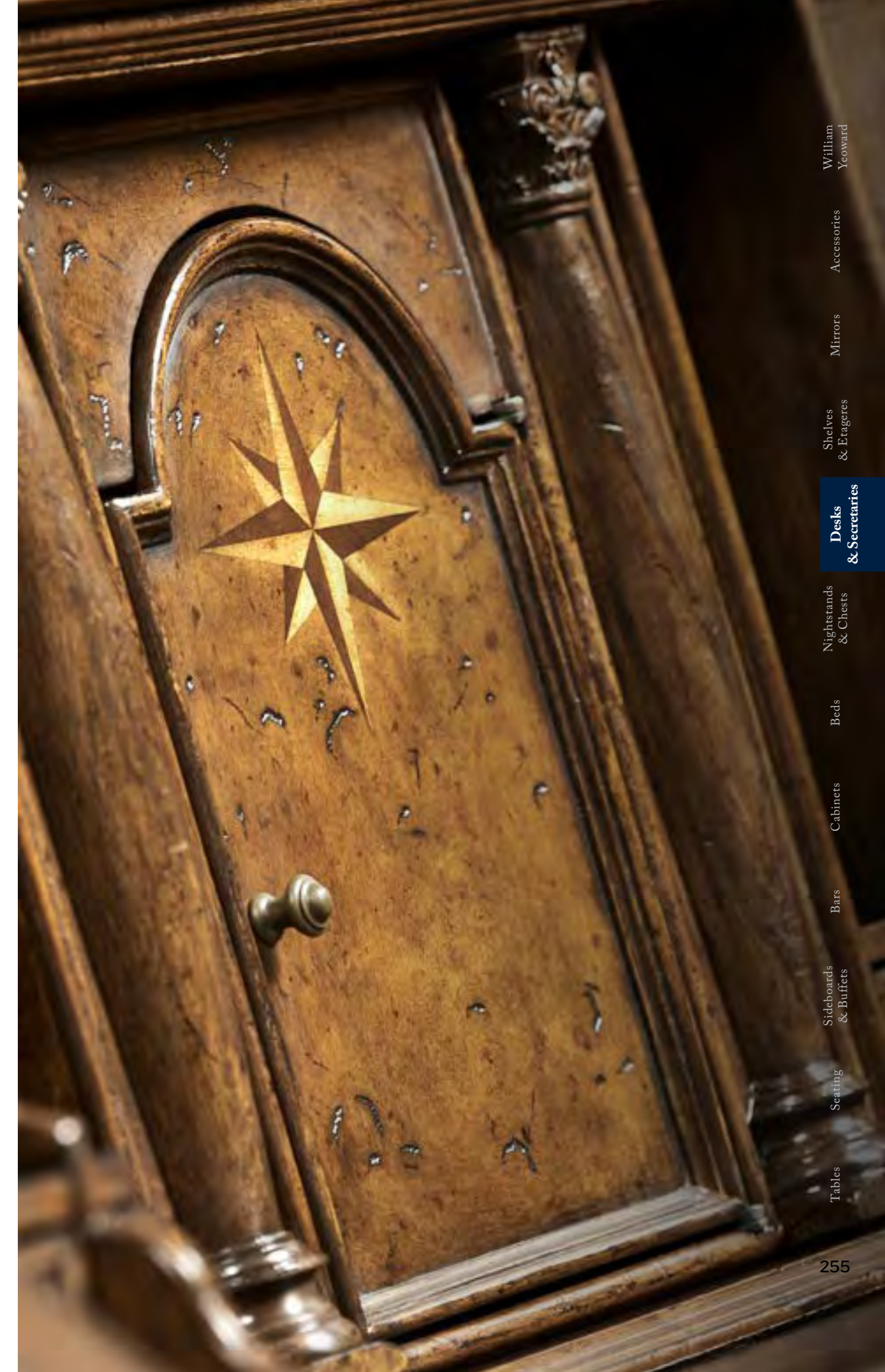
QUEEN ANNE POLLARD VENEER BUREAU CABINET WITH MIRRORED DOORS
494477-LRO | Heritage Portfolio

Dimension: W 45 1/8 x D 22 x H 91 inches
Main Finish: Light Rustic Burr Oak
Main Skill: Veneer Marquetry



QUEEN ANNE POLLARD VENEER BUREAU CABINET (WOODEN DOORS)
494563-LRO | Heritage Portfolio

Dimension: W 45 1/8 x D 22 x H 91 inches
Main Finish: Light Rustic Burr Oak
Main Skill: Veneer Marquetry





JC ICONIC

SHELVES
&
ÉTAGÈRES

[OPPOSITE]

Gilded Kidney Desk with Glass Top | 494214-G
Empire Angel Wing ArmChair | 494590-AC-WAL-L009
Églomisé & Gilded Iron Six-Tier Étagère | 494194-G

SHELVES & ÉTAGÈRES

Contemporary wrought iron narrow six-tier étagère with an antique gilded finish with handpainted églomisé shelves, set on four slender supports which project above the level of the top shelf.

ÉGLOMISÉ & GILDED IRON SIX-TIER ÉTAGÈRE

494194-G | Modern Portfolio

Dimension: W 57 x D 18 ¼ x H 85 ¾ inches

Main Finish: Gilded Iron

Main Skill: Gilding



George II style classical walnut open bookcase with broken pediment, fluted pilasters to the sides, and fretwork decoration to the frieze. Five shelves, the whole set on a stepped pedestal base.

WALNUT OPEN BOOKCASE WITH PEDIMENT

493081-WAL | Heritage Portfolio

Dimension: W 48 ½ x D 19 ¾ x H 94 ¼ inches

Main Finish: Medium Walnut

Main Skill: Wood Carving/Turning





JC ICONIC

MIRRORS

[OPPOSITE]

*French 19th Century Style Bright Gilded Mirror | 493059-GIL
Art Deco High Lustre Console Table | 494086-SAH*

MIRRORS



Decorative William and Mary style gilded mirror with graduated stepped profile, the panels filled with running bands of classical Renaissance style decoration on a gold ground beneath glass. Plain mirror glass.

WILLIAM & MARY STYLE ÉGLOMISÉ FRAMED & GILDED MIRROR

492092-GEG-GPM | Heritage Portfolio

Dimension: W 38 x D 1 ¼ x H 52 inches
Main Finish: Genuine Gold-leaf Églomisé Glass
Main Skill: Églomisé



Decorative rectangular gilded mirror the panels filled with handmade, églomisé gold panels of abstract floral decoration inspired by medieval calligraphy. Plain mirror glass.

RECTANGULAR MIRROR WITH ÉGLOMISÉ GILT BORDERS

492203-GEG | Heritage Portfolio

Dimension: W 38 x D 1 ¼ x H 52 inches
Main Finish: Genuine Gold-leaf Églomisé Glass
Main Skill: Églomisé



Elegant tall Rococo style mirror with fine to the gilded frame, set with a stylised scallop shell to the top. Inspired by an early eighteenth century original. Plain mirror glass.

TALL GILDED MIRROR WITH SCALLOP SHELL

494373-GIL | Heritage Portfolio

Dimension: W 20 x D 1 ¾ x H 47 ¾ inches
Main Finish: Light Antique Gold-leaf
Main Skill: Wood Carving/Turning



Decorative rectangular gilded mirror, the panel filled with running bands of classical Renaissance style decoration on a blue ground beneath glass. Églomisé mirror glass.

RECTANGULAR ÉGLOMISÉ MIRROR WITH GILT RENAISSANCE DECORATION (BLUE)

492205-GIL-GEG-GES | Heritage Portfolio

Dimension: W 27 ¾ x D 1 ¾ x H 48 ½ inches
Main Finish: Light Antique Gold-leaf
Main Skill: Églomisé



MIRRORS



Large rectangular gilded mirror in French Empire style, the architectural frame with finely classical victory motifs including a round central wreath.

EMPIRE STYLE OVERMANTLE MIRROR CIRCULAR WREATH

494449-GIL | Heritage Portfolio

Dimension: W 44 1/8 x D 2 x H 34 1/4 inches

Main Finish: Light Antique Gold-leaf

Main Skill: Wood Carving/Turning



Large rectangular gilded mirror in French Empire style, the architectural frame with finely classical details of swags and wreaths.

EMPIRE STYLE GILDED OVERMANTLE MIRROR

494448-GIL | Heritage Portfolio

Dimension: W 48 x D 2 1/2 x H 34 inches

Main Finish: Light Antique Gold-leaf

Main Skill: Wood Carving/Turning



MIRRORS



French 19th century style painted mirror with a hand carved frame and grisaille decoration.

FRENCH STYLE GILDED GRISAILLE MIRROR

494122-GIL | Heritage Portfolio

Dimension: W 48 x D 2 x H 45 inches

Main Finish: Light Antique Gold-leaf

Main Skill: Wood Carving/Turning



French 19th century style brightly gilded rectangular mirror with a complex handcarved frame.

FRENCH 19TH CENTURY STYLE BRIGHT GILDED MIRROR

493059-GIL | Heritage Portfolio

Dimension: W 36 3/8 x D 2 x H 43 1/4 inches

Main Finish: Light Antique Gold-leaf

Main Skill: Wood Carving/Turning



Napoleonic style gilded rectangular mirror with finely detailed handcarved decoration throughout, a laurel wreath to the top, and lyre-capped columns to the sides.

EMPIRE STYLE GILDED MIRROR

493060-GIL | Heritage Portfolio

Dimension: W 32 5/8 x D 2 x H 54 1/8 inches

Main Finish: Light Antique Gold-leaf

Main Skill: Wood Carving/Turning



MIRRORS



Beautifully carved and water gilded 24" hanging wall mirror with a fantastically detailed border of acanthus leaves and antiqued glass.

CARVED AND WATER GILDED 24" ROUND HANGING WALL MIRROR

495148-WTG | Heritage Portfolio

Dimension: W 24 x D 1 5/8 x H 24 inches

Main Finish: Water Gilded Gold-leaf

Main Skill: Wood Carving/Turning



Decorative Regency style circular mirror with convex glass, the walnut frame with gilded ball details to the glass surround and finely carved and gilded leaf swags to the top and bottom. Églomisé mirror glass. After an original of c.1820.

REGENCY WALNUT & GILT ROUND CONVEX ÉGLOMISÉ MIRROR (LARGE)

493028-GIL | Heritage Portfolio

Dimension: W 34 7/8 x D 3 1/8 x H 47 7/8 inches

Main Finish: Light Antique Gold-leaf

Main Skill: Wood Carving/Turning



MIRRORS



Unusual interlocking wing wall mirror in antique gilded finish with antique mirror. The feathers exhibit fine attention to detail.

CLASSICAL "WINGED" WALL MIRROR

494533-GIL | Modern Portfolio

Dimension: W 22 7/8 x D 1 3/8 x H 35 1/8 inches

Main Finish: Light Antique Gold-leaf

Main Skill: Gilding



Finely detailed large gilt sunburst mirror in Louis XIV style with a broad central glass and twenty four radiating points. Inspired by a 17th century original.

LARGE GILDED SUNBURST MIRROR

494469-GIL | Heritage Portfolio

Dimension: W 67 1/2 x D 67 1/2 x H 3 inches

Main Finish: Light Antique Gold-leaf

Main Skill: Gilding





JC ICONIC

ACCESSORIES

[OPPOSITE]

Mahogany Valet Stand with Stud Box | 493801-USK-MAH

ACCESSORIES



Mahogany and mahogany veneered victorian style valet stand with a shaped hanger to the back, an open stud and link box with drawer, and the front rail with patinated finely cast brass fittings. Barley twist uprights, stretchers, and sweeping legs with floral inlay detail.

MAHOGANY VALET STAND WITH STUD BOX
492443-MAH | Heritage Portfolio

Dimension: W 20 1/2 x D 21 5/8 x H 44 1/2 inches
Main Finish: Medium Antique Mahogany
Main Skill: Wood Carving/Turning



Victorian style sheet music stand, the solid walnut square panel with undulating sides and a central panel with a complex fretted decoration of leaves. Adjustable brass column support on a walnut trefoil base. The stand also has clips to hold the sheets and an adjustable tilting feature.

FRETWORK WALNUT ADJUSTABLE MUSIC STAND
494277-WAL | Heritage Portfolio

Dimension: W 22 x D 15 3/4 x H 53 7/8 inches
Main Finish: Medium Walnut
Main Skill: Wood Carving/Turning



ACCESSORIES

Walnut and crotch walnut veneered regency style valet stand with a shaped hanger to the back, an open stud and link box with drawer, and the front rail of patinated brass. Reeded paired column supports set on carved voluted feet.

REGENCY STYLE WALNUT VALET STAND WITH STUD BOX

494297-WAL | Heritage Portfolio

Dimension: W 20 ½ x D 16 ¼ x H 47 inches

Main Finish: Medium Walnut

Main Skill: Wood Carving/Turning





JC ICONIC

WILLIAM YEOWARD

...collected

BY JONATHAN CHARLES

[OPPOSITE]

Oulton Vintage Oak Cabinet with Glass Doors & Glass Shelves | 530069-VTO

Biddulph Kitchen Oak Coffee Table | 530066-KTO

Gunby Grey Fruitwood Dining ArmChair | 530010-GFX-AC

WILLIAM YEOWARD ...COLLECTED

One can only marvel at the humor of the Tenbury games table with its stack of books, its secret drawers and chessboard top. I really feel that no library should ever be without one.

TENBURY NAVY OAK GAME TABLE

530035-NVO | William Yeoward... Collected

Dimension: W 31 ½ x D 31 ½ x H 28 ¾ inches

Main Finish: Navy Oak

Main Skill: Hand Painting



Related Products



530002-SC-GFA



530002-AC-GFA





WILLIAM YEOWARD ...COLLECTED

This marvellous oak display cabinet was rescued from a rather exciting house in Cheshire that was the venue of many a tryst in the 1920s. One night there was a great ball and the house was raised to the ground. Three things were saved, one being this delightful oak cabinet with painted interior. The interior, with my signature polka dot was taken from old French linen that I fell in love with. The wash of colour on the cornice and plinth finishes the Oulton with perfect symmetry.

OULTON VINTAGE OAK CABINET WITH GLASS DOORS & GLASS SHELVES

530069-VTO | William Yeoward... Collected

Dimension: W 55 ¾ x D 21 ¼ x H 99 ¾ inches

Main Finish: Vintage Oak

Main Skill: Wood Carving/Turning



WILLIAM YEOWARD
...COLLECTED



Inspired by the Bywater buffet, this storage cabinet is the perfect compliment. Although it is a substantial piece it has a lightness and humor that makes it very usable.

BELLEVILLE WASHED ACACIA STORAGE CABINET

530215-WAA | William Yeoward... Collected

Dimension: W 42 x D 22 x H 34 ¼ inches

Main Finish: Washed Acacia

Main Skill: Wood Carving/Turning



My Alnwick bureau has been moved so many times and been used in so many different decorative schemes that I struggle to remember exactly when it came into our house. The exaggerated cornice and the beautifully rubbed back white exterior help frame the pretty blue interior with its balustrade and its little drawers. Not only is this bureau extremely handsome, it is also madly useful as a place for storage.

ALNWICK BUREAU

530034-WAA | William Yeoward... Collected

Dimension: W 56 ½ x D 22 ¾ x H 99 inches

Main Finish: Washed Acacia

Main Skill: Wood Carving/Turning



WILLIAM YEOWARD
...COLLECTED



Inspired by the traditional beds of Mallorca, the beautiful Balearic island south of Spain the Morris bed is traditionally elegant and light yet wonderfully intricate and extremely comfortable. Including a bespoke divan, the Morris Bed is the design lovers' dream brought to life and the perfect excuse to sneak off to bed early.

MORRIS KING BED

530090-USK-GYO | William Yeoward... Collected

Dimension: W 83 3/8 x D 87 3/8 x H 94 1/2 inches

Main Finish: Greyed Oak

Main Skill: Wood Carving/Turning



Related Products



530257-AC-GYO-F071



530099-GYO



530131-GYO



530095-GYO

WILLIAM YEOWARD ...COLLECTED



The Bywater commode with its extraordinary and much admired bronze hardware was inspired by an English 18th century chest in the painted Swedish genre. This bow-fronted piece with its polka dot drawer lining is a classic in its own time. Use it in an entry or a bedroom or even as a pair, each side of a chimney piece in a drawing.

BICKERTON COMMODE
530068-WAA | William Yeoward... Collected

Dimension: W 50 x D 20 x H 35 inches
Main Finish: Washed Acacia
Main Skill: Hand Casting



On my visit to the Luberon I was also taken with the Arles desk which I found usefully positioned in my bedroom. There is something very reassuring about 18th & 19th century French country furniture in that it has a timelessness that allows it to work in any interior. Named Arles after where it was found, this desk is generous and can be used as a full time place of work.

ARLES DESK
530131-GYO | William Yeoward... Collected

Dimension: W 61 x D 31 x H 39 ¼ inches
Main Finish: Greyed Oak
Main Skill: Wood Carving/Turning





This mirror exudes sophistication and elegance, the Leicester is a classically styled mirror shown in a venetian white oak with extraordinary detailed carving.

LEICESTER VENETIAN WHITE OAK MIRROR

530162-VWO | William Yeoward... Collected

Dimension: W 30 1/8 x D 1 3/4 x H 54 inches

Main Finish: Venetian White Oak

Main Skill: Wood Carving/Turning



With its lusciously carved Prince of Wales feathers, the Rothesay mirror so named after the Prince of Wales' Scottish title is majestic in every way. Perfect for use above our York console which can be topped off with a pair of Mandeston urns.

ROTHESAY VENETIAN WHITE OAK MIRROR

530122-VWO | William Yeoward... Collected

Dimension: W 40 x D 5 x H 56 inches

Main Finish: Venetian White Oak

Main Skill: Wood Carving/Turning

WILLIAM YEOWARD ...COLLECTED

A pedestal table of such decorative design is of course almost impossible to find. As you will have noticed the polka dot around the border gives it an amusing finish. The lovely grain and the cut outs of the pedestal are not only truly charming but also give the substantial table an illusion of lightness.

COLLAMORE CHARCOAL OAK TABLE

530114-CHO | William Yeoward... Collected

Dimension: W 24 ¾ x D 21 ½ x H 22 ¾ inches

Main Finish: Charcoal Oak

Main Skill: Wood Carving/Turning



This oak table with its parquetry top is the perfect choice for the family sitting room. Tough, robust and very, very stylish, this table works well in front of the sofa or even for a casual supper. With drawers to the ends there is the perfect place to store all the clutter and the remotes for the TV!

BIDDULPH KITCHEN OAK COFFEE TABLE

530066-KTO | William Yeoward... Collected

Dimension: W 56 ½ x D 30 x H 18 ½ inches

Main Finish: Kitchen Oak

Main Skill: Veneer Marquetry





The Purbeck console table with its distressed brass banded marble top looks great in a living room from which to serve cocktails. This piece derived from the original Purbeck table which I have owned for more than 20 years is not only smart but unique! Try finding another!

PURBECK GREY OAK CONSOLE

530013-GYO | William Yeoward... Collected

Dimension: W 67 x D 25 7/8 x H 34 5/8 inches

Main Finish: Greyed Oak

Main Skill: Wood Carving/Turning



Our Godwyn console table, taken from its smaller friend, seems to me to fit perfectly behind the sofa, on which to place a pair of beautiful lamps and a large tray of cocktails. Again, the drawer of the table is lined in our signature grey polka dot. I think a little fantasy in any decorative scheme always lightens the mood.

GODWYN GREY OAK CONSOLE TABLE

530029-GYO | William Yeoward... Collected

Dimension: W 63 1/2 x D 25 7/8 x H 29 7/8 inches

Main Finish: Greyed Oak

Main Skill: Wood Carving/Turning



WILLIAM YEOWARD ...COLLECTED

The original piece was a C18th century vintners table that we discovered in a dreadful state in a cellar in France. The exquisite carved detailing remains faithful to the original but we have adapted this console table for modern day use.

BELLEFONTAINE VENETIAN WHITE OAK CONSOLE TABLE

530210-VWO | William Yeoward... Collected

Dimension: W 72 x D 24 x H 34 inches

Main Finish: Venetian White Oak

Main Skill: Wood Carving/Turning



There are times when a grand piece of furniture is required in a decorative scheme and the York console definitely fits the bill. Intricately carved and beautifully proportioned, this piece will sit well in the larger dining room.

YORK VENETIAN WHITE OAK CONSOLE

530098-VWO | William Yeoward... Collected

Dimension: W 78 x D 28 x H 34 ¾ inches

Main Finish: Venetian White Oak

Main Skill: Wood Carving/Turning

My Artaross console, which we have made in both grey crotch mahogany and greyed oak, has drawers lined in my signature grey polka dot marquetry. This table has been utterly and totally invented! Given my fancy for the gothic, it seemed amusing to make a console table for our dining room that could work alongside the Longwood dining table.

ARTAROSS MAHOGANY CONSOLE

530025-GMA | William Yeoward... Collected

Dimension: W 50 ½ x D 19 ½ x H 34 inches

Main Finish: Grey Mahogany

Main Skill: Wood Carving/Turning



WILLIAM YEOWARD ...COLLECTED

The Overbury table is just so useful. We had the original, smaller version, in our nursery as children and used to take breakfast off it with our nanny. It's a great size and the finish of greyed oak and the use of a crown cut oak top has given it a wonderful organic and rather timeless feel. Once I had seen the original sample I decided we must make it in two sizes.

OVERBURY 54" GREY OAK BREAKFAST TABLE

530021-54D-GYO | William Yeoward... Collected

Dimension: W 54 x D 54 x H 29 ½ inches

Main Finish: Greyed Oak

Main Skill: Wood Carving/Turning



The Dalkeith table is a masterpiece in carving. The hand-carved oak base, fluted, chiseled and sanded, supports the amusing top with curled edges and inset with white Carrara marble. I would love to use this in a foyer or a loggia.

DALKEITH TABLE

530046-WAO | William Yeoward... Collected

Dimension: W 35 ¾ x D 35 ¾ x H 32 ½ inches

Main Finish: Washed Oak

Main Skill: Wood Carving/Turning



WILLIAM YEOWARD ...COLLECTED

The Lacock dining table, which I have taken from a table with a small occasional base, happily seats ten. Its scroll foot and book-matched veneered top, finished in venetian white oak with silver gilding, makes it the enviable combination of smart and grand, but not traditional.

70" LACOCK DINING TABLE

William Yeoward... Collected

Main Skill: Wood Carving/Turning

TOASTED OAK
530054-GFO-70D (A)

Dimension: W 70 7/8 x D 70 7/8 x H 29 1/2 inches
Apron height: 26 3/4 inches
Seats: 8

VENETIAN WHITE OAK
530054-70D-VWO (B)

Dimension: W 70 7/8 x D 70 7/8 x H 29 1/2 inches
Apron height: 26 3/4 inches
Seats: 8



A



B



Related Products



530000-SC-GYO



530242-AC



530215-WAA

WILLIAM YEOWARD ...COLLECTED

When I first saw the Belleville buffet I knew immediately where to put it in my blue and white house. Although a substantial piece it has a lightness and humour that makes it very usable.

BELLEVILLE BUFFET

William Yeoward... Collected

Main Skill: Wood Carving/Turning



WASHED ACACIA
530127-WAA (A)

GREY FRUITWOOD
530127-GFA (B)

Dimension: W 72 ½ x D 22 x H 34 ¼ inches

Dimension: W 72 ½ x D 22 x H 34 ¼ inches



A



B



A modern interpretation of a mid century buffet as resulted in the Hewlett. A pair of cupboards realised on an open stand will give an edge to a contemporary room. The detail is well resolved and the proportions are perfect.

HEWLETT GREY OAK BUFFET

530099-GYO | William Yeoward... Collected

Dimension: W 72 x D 22 x H 32 inches

Main Finish: Greyed Oak

Main Skill: Inlay Technique



303

WILLIAM YEOWARD ...COLLECTED

This Bodiam armchair is constructed of greyed oak and taken from an early C19th painted piece at home. This chair has been given a modern finish with fine hand rushing and plenty of care makes it charming. The Bodiam is also strong and durable, and can be used in kitchens and dining rooms.

BODIAM GREY OAK CHAIR

William Yeoward... Collected

Main Finish: Greyed Oak

Main Skill: Wood Carving/Turning



SIDE CHAIR
530000-SC-GYO

Dimension: W 21 ½ x D 22 ¾ x H 38 inches

ARMCHAIR
530000-AC-GYO

Dimension: W 21 ½ x D 22 ¾ x H 38 inches



Related Products



530054-70D-VVO



Aveburn armchair & side chair seen in a natural fruitwood is a replica of a country chair from the 1790s. This delightful piece is steeped in classicism and has been carefully crafted with a rush seat. Great for dining or using in halls, kitchens or even, as I do, a bedroom.

AVEBURN GREY FRUITWOOD CHAIR

William Yeoward... Collected

Main Finish: Greyed Oak

Main Skill: Wood Carving/Turning

SIDE CHAIR
530002-SC-GFA

Dimension: W 19 ¾ x D 22 ¾ x H 37 ¾ inches

ARMCHAIR
530002-AC-GFA

Dimension: W 21 ½ x D 22 ¾ x H 37 ¾ inches

Related Products



530054-GFO-70D



530035-NVO

WILLIAM YEOWARD ...COLLECTED

Gunby dining armchair & side chair is smart comfortable and taken from one in my collection purported to be by Mr. Hepplewhite! Gunby has a delightful shaped back and smart hand carved legs. To me it's the perfect dining chair from which to enjoy a perfect dinner and some great claret!

GUNBY GREY FRUITWOOD DINING CHAIR

William Yeoward... Collected

Main Finish: Grey Fruitwood

Main Skill: Wood Carving/Turning



SIDE CHAIR
530010-SC-GFA

ARMCHAIR
530010-AC-GFA

Dimension: W 22 1/2 x D 24 3/4 x H 37 7/8 inches

Dimension: W 23 7/8 x D 24 3/4 x H 37 7/8 inches



A modern interpretation of a regency masterpiece, ebonised by hand and finished with exquisite care. This delightful chair is picked out in antiqued silver leaf to accent its wonderful form. Use as pairs in halls or drawing rooms and by the dozen around a large dining table.

LINDEN CHAIR

William Yeoward... Collected

Main Finish: Charcoal Wash

Main Skill: Gilding



SIDE CHAIR
530121-SC-CHW

ARMCHAIR
530121-AC-CHW

Dimension: W 21 x D 23 7/8 x H 36 1/8 inches

Dimension: W 23 5/8 x D 23 7/8 x H 36 1/8 inches



Related Products



530046-WAO

WILLIAM YEOWARD ...COLLECTED



The quality of caring and finishing of this magnificent greyed oak begere needs to be admired and respected. The original chair is in fact the brother to the tarporley table. This piece works elegantly in a drawing room of contemporary or traditional taste.

TARPORLEY GREY OAK ARMCHAIR

530096-GYO | William Yeoward... Collected

Dimension: W 24 7/8 x D 25 1/4 x H 40 1/4 inches

Main Finish: Greyed Oak

Main Skill: Wood Carving/Turning

Jacob has been part of our family for many years. My grandmother, who had excellent taste, loved using this chair in her vast country hall at the side of a great carved serving table. Once gilded and now stripped, this chair takes on museum quality both in the quality of the carving and the accuracy of the finish. It's what I call 'simple grand'.

JACOB COUNTRY DISTRESSED DINING CHAIR

530194-PCD | William Yeoward... Collected

Dimension: W 21 1/8 x D 21 1/2 x H 41 3/8 inches

Main Finish: Country Distressed

Main Skill: Wood Carving/Turning



The Tarporley stool with its carved ram leg makes an ideal cocktail table in a grand country drawing room. Pile up the magazines and books, put on the tray of cocktails and perch elegantly while enjoying an evening of classic entertainment.

SMALL TARPORLEY GREY OAK STOOL

530095-GYO | William Yeoward... Collected

Dimension: W 50 x D 30 x H 19 inches

Main Finish: Greyed Oak

Main Skill: Wood Carving/Turning



When I saw the original Toby sofa it was in shocking repair and sold to me some 20 years ago by a delightful young antiques dealer who was simply learning his trade. To me, the elegant lines of this 1940s treasure are as relevant today as the day the piece was originally constructed.

TOBY'S GREY OAK SOFA

530091-GYO | William Yeoward... Collected

Dimension: W 80 7/8 x D 25 3/4 x H 35 1/4 inches

Main Finish: Greyed Oak

Main Skill: Wood Carving/Turning

Inspired by the grand British seaside guesthouses of yesteryear where elegant recliner chairs would be lined up in conservatories for those "taking" the sea air. The elegantly shaped and sloped form makes for a great occasional chair that would look as perfect in a living room as it would in a bedroom or conservatory. Perfectly finished in greyed oak with beautiful carved detailing.

WHITBY LOUNGE CHAIR

530257-AC-GYO-F071 | William Yeoward... Collected

Dimension: W 27 ¼ x D 41 x H 42 ¼ inches

Main Finish: Greyed Oak

Main Skill: Wood Carving/Turning

Crafted from solid oak, the Ampney armchair exudes a natural beauty that only real wood can offer. The washed grey oak finish enhances the wood's texture and grain, creating a warm and welcoming ambiance. Its whimsical silhouette adds a playful touch to its contemporary design. The curved backrest and arms create a sense of movement and fluidity, making this chair a visually captivating addition to your home. The upholstered seat features a sage performance fabric that adds a refreshing touch and pieces of mind for any dining mishaps.

AMPNEY CHAIR

William Yeoward... Collected

Main Finish: Greyed Oak

Main Skill: Wood Carving/Turning



SIDE CHAIR

530242-SC-GYO-F066

ARMCHAIR

530242-AC-GYO-F066

Dimension: W 19 ½ x D 22 x H 35 ½ inches

Dimension: W 21 x D 22 x H 35 ½ inches



**AMPNEY TOASTED OAK
SIDE CHAIR**

530242-GFO-SC-F400



**AMPNEY TOASTED OAK
ARMCHAIR**

530242-GFO-AC-F400

Related Products



530054-70D-VW0





493366-MAH 493199-MBL 493305-WAL 493224-CWM 493501-WAL 493214-MAH 492146-SAM 493849-WAL 492225-WAL-GED



492661-SAL 492098-WAL 494127-GIL 494143-GIL 493780-BWM 493286-GIL 494086-SAS 493239-GIL 493187-GIL



493208-GIL 493226-GIL 493558-GIL 495100-GIL 494982-GIL 494353-GIL-SG01 492268-MAH 495092-SAL 493929-CWM



492134-WAL 492517-24D-MAH 492265-WAL 492057-WAL 492671 492560-SAM 494456-CWM 495355-LAB 500062-ABF



495908-CRO 494975-LAB 494976-LAB 496064-SDG-M025 495511-ED001 499065-MAH 499212-BRW-MOP 495059-BMA 492454-MAH-GEB



492096-WAL 495090-SAL 495091-SAL 495058-SAL 492086 492151-SAL 492611-MBL-L030 492534-MAH 495074-SAL



499329-BRW-MOP 492846-MAH 493142-PBF 492027-WAL 499188 492600-MAH 494959-ZEB 495448-ZEB 495633-ZEB



500229-BAE-ENO 500218-BAE-ENO 500208-BAE-ENO 493169 494072-MAH 493380-92L-MAH 494408-CWM 493507-79L-MAH 492266-75L-MAH



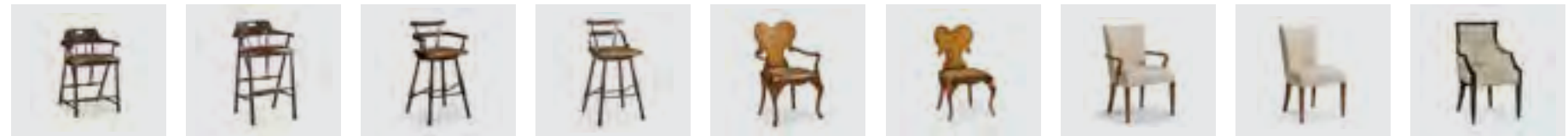
493594-158L-CWM 493372-48D-TDO 493070-66D-CWM 494642-96D-MAH 500347-87L-BAE 492836-AC-MAH-F200 492836-SC-MAH-F200 498088-AC-BRW-L011 498088-SC-BRW-L011



493330-AC-MAH-F200 493330-SC-MAH-F200 492472-AC-MAH-F200 492472-SC-MAH-F200 492476-AC-MAH-F200 492476-SC-MAH-F200 499511-AC-MAM-MOP-F200 499511-SC-MAM-MOP-F200 494347-AC-MAH-F200



494347-SC-EBF-F200 495627-CWM-F001 492300-AC-WAL 492300-SC-WAL 500250-AC2-LBG-F048 500250-AC1-LBG-F048 500250-SC-LBG-F048 493402-AC-TDO 493402-SC-TDO



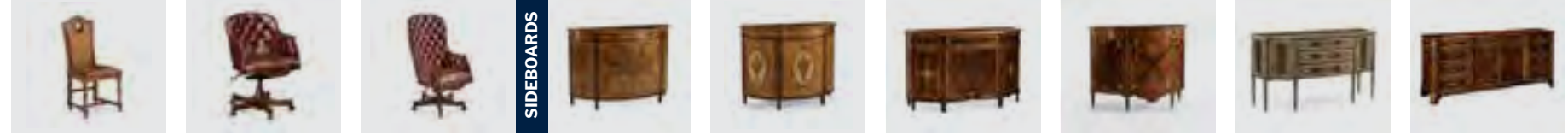
495887-CS-TDO 495887-BS-TDO 494315-AC-TDO 494315-SC-TDO 492802-AC-WAL-L002 492802-SC-WAL-L002 494808-AC-CWM-F200 494808-SC-CWM-F200 500019-AC-EDG-F001



500019-SC-EDG-F001 495047-AC-BLA-F001 495047-SC-BLA-F001 495848-WAL-F001 500118-BLG-F001 494983-BLA-F001 494590-AC-WAL-L009 494590-SC-WAL-L009 495426-GIL-F200



493359-AC-WAL-L007 493362-SC-WAL-L007 493360-AC-WAL-L007 493361-SC-WAL-L007 493381-AC-TDO 493381-SC-TDO 493383-AC-WAL-L002 493385-SC-WAL-L002 493387-AC-WAL-L002



493389-SC-WAL-L002 494395-MAH-L016 494396-MAH-L016 493075-CWM 492253-SAM 493190-MAH 495039-MAH 492637-MBL 493134-MAH



494842-MAH 493184-MAH 492973-WAL 494564-SET-TDO 493072-BLA 495144-BLA 493073-WAL 493072-MAH 492437-SAM-GES

SIDEBOARDS

BAR

CABINETS

SEATING

CABINETS



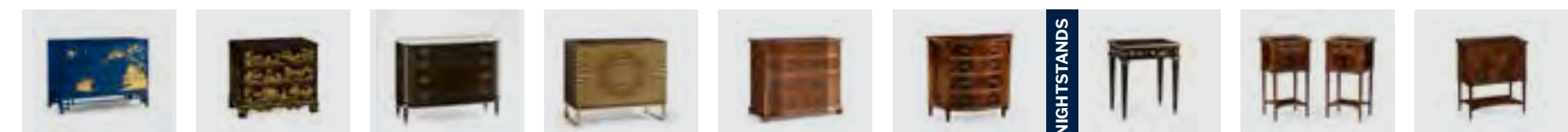
493585 -SAM 493126-CWM 493156-CWM 492250-MAH 492249-FBG 495893-WRC-LGF 493584-BWM 492356-FBG 492259-BFW



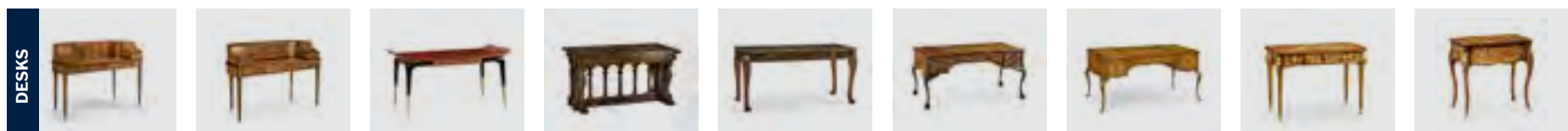
500020-WDG 493149-BWM 493146-TDO 493177-TDO 492033-WAL 492582-WAL 500226-BAE-ENO 500142-WDG 500171-AGF-BLG



493132-MAH 494178-SAM-SG01 493801-USK-MAH 493941-USK-CWM 495759-SAM 494374 494167-SAM-SG01 494646-CWM 494004-LAM



500249-PRB 495353-EBF 495561-BEC 500082-SWB 492090-WAL 492659-MAH 495352-EBF 492822-MAH 493090-MAH



492444-SAM-L001 493068-SAM 495579-EDR 494780-MWA 492173-WAL 493062-CWM 493098-BWM 494535-SAL 494553-SAL



494640-SAL 493198-MAH 493063-MAH 494163-WLL 493071-CWM 494335-SAH-STS 492252-WLL 492634-SAM 492218-SAM



494482-CWM 494557-CWM 494477-LRO 494563-LRO 492419 494556-LRO 494558-CWM 492220-WAL 494194-G



493081-WAL 492092-GEG-GPM 492203-GEG 492205-GIL-GEG-GES 494373-GIL 494372-GIL 494449-GIL 494448-GIL 494122-GIL

ACCESSORIES



493059-GIL 493060-GIL 495148-WTG 493028-GIL 494469-GIL 494468-GIL 494533-GIL 493116 492443-MAH



494277-WAL 494297-WAL 530035-NVO 530069-VTO 530034-WAA 530215-WAA 530090-USK-GYO 530068-WAA 530131-GYO



530162-VVO 530196-WAA 530122-VVO 530114-CHO 530066-KTO 530013-GYO 530029-GYO 530210-VVO 530098-VWO



530025-GMA 530021-54D-GYO 530046-WAO 530054-70D-VVO 530127-WAA 530099-GYO 530000-AC-GYO 530000-SC-GYO 530002-AC-GFA



530002-SC-GFA 530010-AC-GFA 530010-SC-GFA 530121-AC-CHW 530121-SC-CHW 530096-GYO 530194-PCD 530095-GYO 530091-GYO



530257-AC-GYO-F071 530242-AC-GYO-F066 530242-SC-GYO-F066

SHELVES

MIRRORS

ÉTAGÈRE

JONATHAN CHARLES

STAY CONNECTED
FOLLOW US ACROSS ALL PLATFORMS



FOLLOW US FOR
INSPIRATION AND UPDATES



JC DINING SOLUTIONS
FOR YOUR DINING ROOM



FOLLOW & TAG US TO GET
FEATURED ON JC'S **INSTAGRAM**



VIEW OUR
CRAFTSMANSHIP **VIDEOS**



JC SHOWROOM 360°
VIRTUAL TOUR

US/CANADA: customer@jonathancharlesus.com
OTHER COUNTRIES: sales@jonathancharles.com

jonathancharles.com



