

**Listed Alphabetically:**

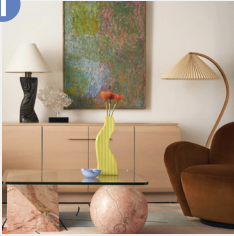
1. 214 MODERN VINTAGE
2. ANTIQUE & DESIGN CENTER
3. BLUE OCEAN TRADERS
4. BOXWOOD ANTIQUE MALL
5. CHELSEA ON GREEN
6. COHAB.SPACE
7. COLLECTED BY SCHWUNG
8. ELICO
9. GOLDEN OLDIES
10. LAVENE ANTIQUES
11. PRB COLLECTION
12. RANDALL TYSINGER ANTIQUES
13. TEXTURE



# ANTIQUUE, VINTAGE & one-of-a-kind

HIGH POINT MARKET

1



## 214 Modern Vintage

314 W Russell Ave

**GREEN LINE SHUTTLE STOP 12**

Market: 9am-6pm

Open the Wednesday before each market, with a reputation for having the most incredible collection of vintage art in High Point. 214 offers variety, from 19th century primitives & 20th century designer pieces to contemporary artisan-made objects and furniture. A fresh & adventurous perspective awaits.

@214modern 336.314.8082

6



## COHAB. Space

1547 W English Rd

**GO ANYWHERE SHUTTLE**

Market: 9am-6pm

Highlighting artists and makers from disciplines spanning ceramics to handmade one-of-a-kind bespoke furniture. Shop the warehouse, our brands include Blaxsand, Clubcu, & Noorside. Open to the public and market goers.

@cohab.space 1.888.475.3030

11



## PRB Collection

500 Ennis St

**GO ANYWHERE SHUTTLE**

Market: 9am-5pm

PRB Collection features a rotating selection of Twentieth-Century design objects from their inventory of over 6,000 unique items. Gallery open to the public. Reservations strongly recommended to view full inventory.

@prb.collection 336.858.5010

2



## Antique & Design Center

Market Square G1-74

**RED LINE SHUTTLE STOPS 14 & 29**

Market: 9am-6pm

The Antique & Design Center of High Point gathers 70+ of the country's most talented and creative antiques dealers every High Point Market. Founded in 2010, we have been bringing the soul to High Point Market for the last 13 years!

@antiquedesignct 336.908.2735

7



## Collected by Schwung

501 S Centennial

**GREEN LINE SHUTTLE STOP 4**

Market: 9am-6pm

Providing a curated assortment of unique home furnishings & designer classics, including beautiful European antiques, North African artisanal objects, and original-designed European lighting.

@collectedbyschwung 336.307.3712

12



## Randall Tysinger

208 N Elm St

**RED LINE SHUTTLE STOP 26**

Market: 9am-6pm

Randall Tysinger has been a direct importer of fine quality European antiques for over 30 years. We hand pick only the finest European antiques from the 17th, 18th, 19th centuries as well as some mid-20th century pieces for our discerning global clients.

@randalltysingerantique 336.885.7174

3



## Blue Ocean Traders

105 Depot Place

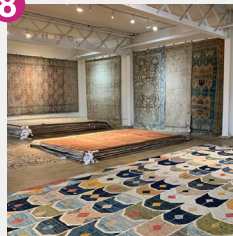
**RED LINE SHUTTLE STOP 16**

Market: 9am-6pm

Blue Ocean Traders Presents: Gypsy Marketplace a 20,000 square foot warehouse where you can touch it, feel it, and take it with you. We scour the globe to bring you one of a kind products, antiques and vintage treasures from 16 far-flung countries! From the odd to the obscure, Gypsy Marketplace is your one stop shop for all things curious!

@blueoceantraders 502.637.1840

8



## Eliko Rugs by David Ariel

108 S Lindsay St

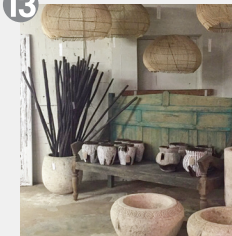
**GREEN LINE SHUTTLE STOP 11**

Market: 9am-6pm

Featuring more than 14,000 pieces, ELIKO is renowned for having among the country's largest wholesale inventories of antique and vintage rugs from different rug weaving areas. ELIKO showcases rare antique masterpieces, & debuts modern collections, offering the perfect find at all price points.

@elikorugs 212.725.1600

13



## Texture

517 S Hamilton St

**GREEN LINE SHUTTLE STOP 4**

Market: 9am-6pm

Wholesaler of one of a kind finds from Indonesia. Handcrafted tables, baskets, mirrors, consoles, seating, & exclusive accessories. All items are displayed and available for immediate purchase.

@texture\_imports

4



## Boxwood Antique Market

520 N Hamilton St

**RED LINE SHUTTLE STOP 21**

Market: 9am-6pm

French, English and American antiques. Spend hours shopping for vintage, home decor, collectibles, designer decor in our 26,000 sq ft showroom. Schumacher and Mad Cap Cottage wallpaper and fabric available.

@boxwoodantiquemarket 336.892.2337

9



## Golden Oldies

310 W Broad Ave

**RED LINE SHUTTLE STOP 27**

Market: 9am-6pm

Three warehouses totaling over 100,000 sq ft of vintage and antique furniture, decor, garden & architectural elements with fresh shipments arriving weekly from Europe & Asia. Golden Oldies is a must visit destination.

@goldenoldiesantiques

5



## Chelsea on Green

515 W Green Dr

**GREEN LINE SHUTTLE STOP 11**

Market: 9am-7pm

Vintage/Antiques & Design Showroom of 38 curated antique dealers. Offerings include 18th-21st century furnishings, decorative accessories and original art. Chelsea on Green is a must visit location during #HPMKT.

@chelseaongreen 336.942.0018

10



## La Vene Antiques

207-209 E Westwood Ave

**RED LINE SHUTTLE STOP 21**

Market: 9am-6pm

Offering English, French & Italian Antiques and accessories in our High Point location near the iconic big chest of drawers. A selection of high end designer fabric available as well.

@luxefabrics 336.317.0568

## GO ANYWHERE SHUTTLE

336.887.RIDE (7433)

For any showroom or event that is not serviced by the Downtown Showroom Shuttle, use our Go Anywhere Shuttle. It's recommended to call each showroom outside of the official published showroom hours.

**HPMKT**  
High Point Market